

Activate
on up to
5 devices
at any one
time!

Installing Office 365

for PC, Mac or mobile device



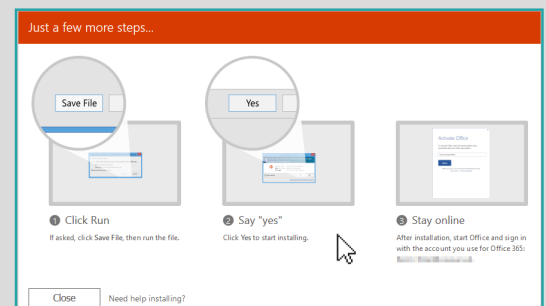
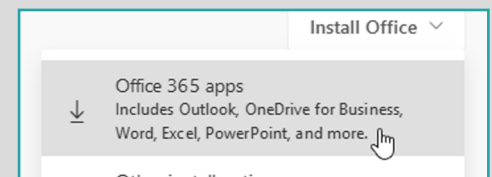
Software package for PC includes Word, Excel, Publisher, PowerPoint, Teams, Skype and more...

For PC or Mac

1. Go to **office365.uwe.ac.uk** and log in.
2. Click **Install Office** on the right, then select **Office 365 apps** from the drop-down menu.
3. **Follow the on-screen instructions to install the programs.**

Once installed, open any Office program.

You will be asked to enter your **UWE email address and password**. This will activate your licence for **all** Office programs.



For Android or iOS

Search and download Office programs individually from:

Google Play for Android devices, including Chromebooks.

App Store for iOS devices.

The first time you run each program, you will need to enter your UWE email address and password to connect to your UWE profile.



For assistance from IT Services:



Call the Service Desk on **0117 328 3612**



Email **itonline@uwe.ac.uk**