

Don't just choose a city.  
Don't just choose a course.

# Choose a mindset



Choose to do university right.

[uwe.ac.uk](http://uwe.ac.uk)

# Open days



**Saturday 6 June 2020**

Bristol Zoo, City Campus, Frenchay Campus, Glenside Campus



**Saturday 10 October 2020**

Bristol Zoo, City Campus, Frenchay Campus, Glenside Campus



**Saturday 7 November 2020**

City Campus



**Saturday 21 November 2020**

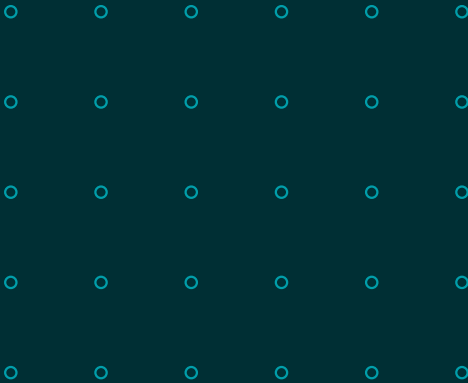
Bristol Zoo, City Campus, Frenchay Campus, Glenside Campus

Be bold.

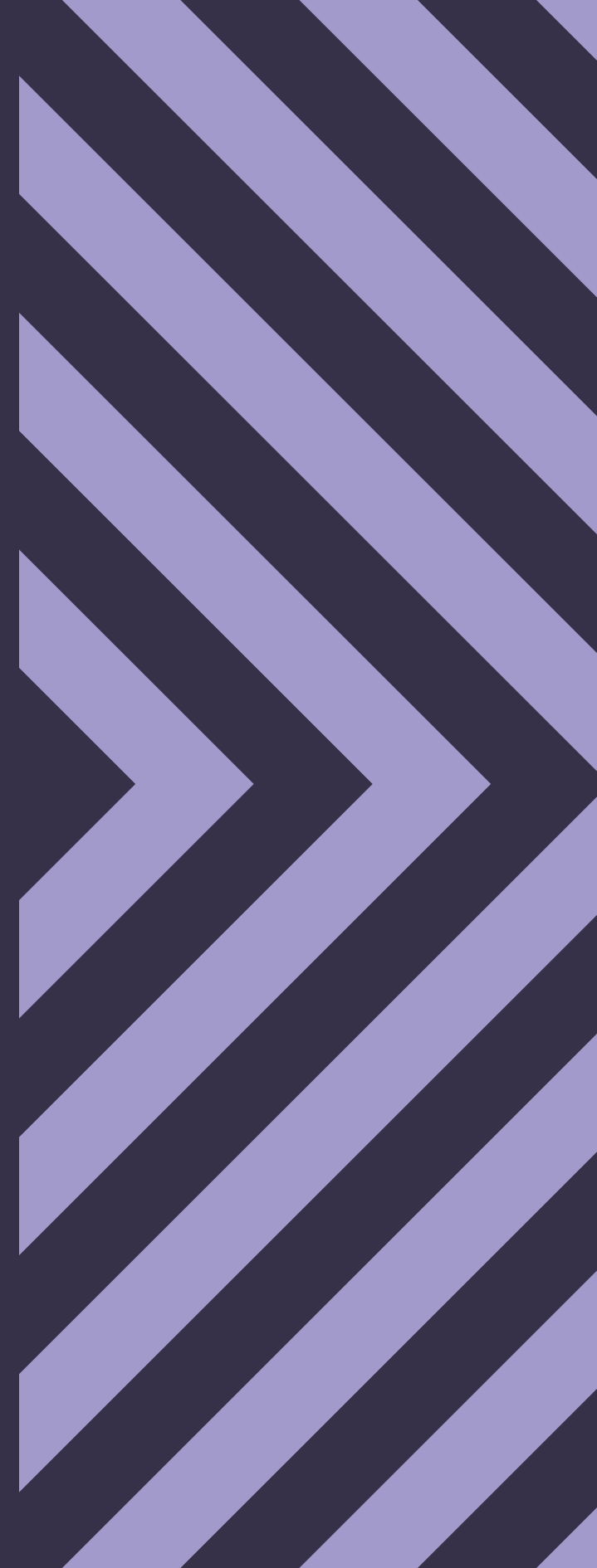


If you would like any part of this document in an alternative format (e.g. large print, audio, Braille), please let us know.

- @UWEBristol
- @UWEBristol
- UWEBristol
- UWE Bristol
- uwebristol
- University of the West of England
- uwechina
- uwechina



→	Choose a mindset .....	4–21
→	Choose a community .....	22–53
→	Choose to stand out .....	54–75
→	Choose your passion .....	76–93
→	Make it happen .....	94–103
→	Course directory .....	104–119





Choose

a

mind set



**Don't**

**JUST**

**go to university.**



Fraser studied **BEng(Hons) Aerospace Manufacturing Engineering** at UWE Bristol and is now a world record-breaking wingsuit pilot, who set the record for the highest skydive and longest freefall in the UK and Europe.

➔ [uwe.ac.uk/alumni](https://uwe.ac.uk/alumni)





# What if you had three years to change the world?

## The choice is yours.

At UWE Bristol, we empower our students to make a choice. To choose a university that pushes itself as much as it pushes you. To choose a community that's breaking boundaries and leading the way. To choose a passion that excites, delights, thrills and gives you purpose.

And we lead by example. We champion curiosity and encourage you to question everything. We inspire you to push every button and break every mould. We want you to challenge the way things are done. To stop and think. Because when you stop and think, great things happen. Ultimately, we want you to be the best you can be. This is your university experience and no one else's. Choose to do university right.

UWE Bristol Honorary graduate Rob Law MBE is the founder and CEO of Trunki, the brand behind the much-loved ride-on suitcase for tots.



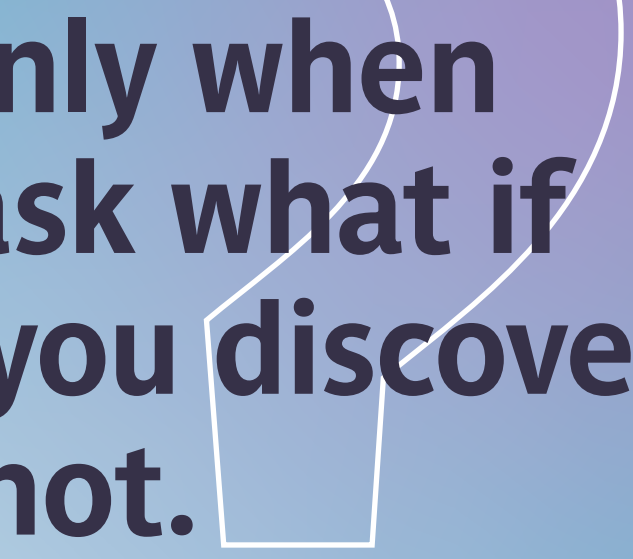




Our new state-of-the-art **Design Studios** at **Bower Ashton** are helping shape the future of the creative industries. Featuring flexible workshop spaces, design studios, the Centre for Fine Print Research and dedicated collaborative learning spaces.

➔ [uwe.ac.uk/designstudios](https://uwe.ac.uk/designstudios)



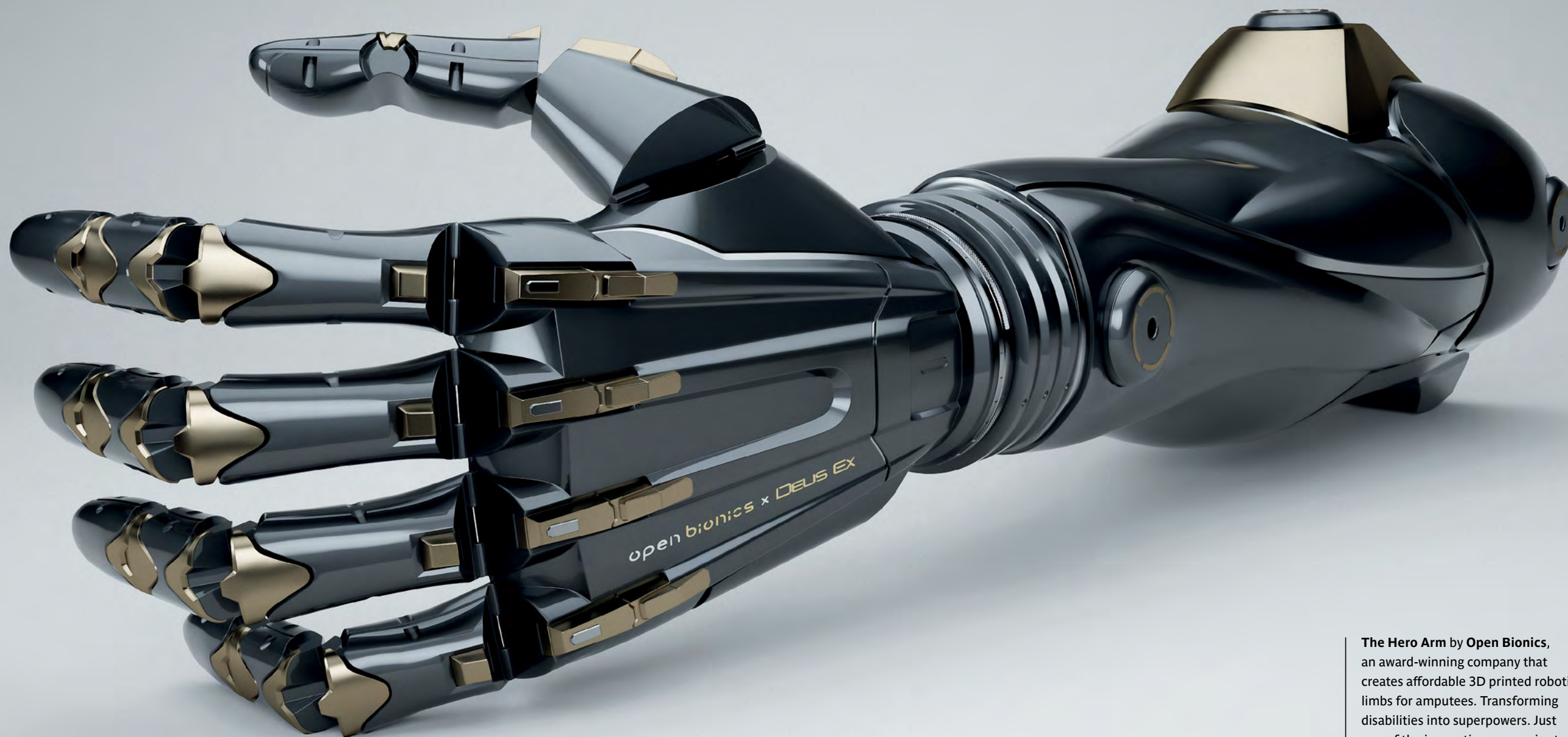


**It's only when  
you ask what if  
that you discover  
why not.**

**What if** our future was more sustainable?  
**What if** smart wasn't afraid to sound stupid?  
**What if** diversity was a given?  
**What if** the status quo didn't exist?

Comfortable never changed the world.  
We want you to join us and tackle the  
big issues head on. You're the future.  
Now create one you can thrive in.





**The Hero Arm by Open Bionics**, an award-winning company that creates affordable 3D printed robotic limbs for amputees. Transforming disabilities into superpowers. Just one of the innovative companies to have been based at UWE Bristol's Enterprise Zone, Future Space.

➔ [uwe.ac.uk/futurespace](https://uwe.ac.uk/futurespace)



The  
right  
way, for  
the right  
reasons.

### Real world ready.

Everything we do here is focused on preparing you for the real world. Our pioneering courses have been created in partnership with industry professionals. And over 150 come with professional accreditation from industry bodies. Coupled with world-class teaching, they're designed to equip you with the most in-demand skills, and the kind of mindset that employers want and need.





# Our students today

# are the leaders of tomorrow.

Welcome to possible. Because at UWE Bristol, everything is within your reach. Don't just take your place in our community of original thinkers – shape it. We'll give you the tools you need to act on your ideas and make them happen. From our enterprise support programmes to industry masterclasses. Professional mentoring to business incubators. World-leading research facilities to work experience opportunities for employers across the globe. Get ready to lead the way.

**Dr Mena Fombo**, Bristol 24/7 Woman of the Year, Bristol's International Ambassador and UWE Bristol graduate.

C h o o s e

a

c o m m u n i t y







# Want it all? You'll find it here.

We believe that when you're supported by a strong community, you can achieve anything. That's why we're proud to have built a powerful community of bright minds and courageous thinkers. Everyone here, from our students to staff, industry connections to alumni are driven by the same goal – how can we make things better? If you share that same mindset, welcome to UWE Bristol. You'll be in excellent company.

We're home to over 30,000 students from across the world. Spread over three campuses, all just a short bus ride away from one another, and the city centre, each site offers state-of-the-art facilities in an inspiring setting.

In fact, UWE Bristol is a powerhouse of potential, located in a city that's known for its creativity. If you choose to study here, you don't need to compromise a thing.

Over the following pages, you'll get a taste of the city we call home, the campuses we've created and the incredible community you could be part of.





# Bristol. Your new home.

Bristol is a city that's famous for its rebellious streak, independent thinking, unique style and edgy creativity.

Home to over 450,000 people, hailing from over 187 different countries – you can find over 91 different languages spoken here, and 45 religions practised. To say it's a melting pot of diversity is an understatement.

Topping polls on a regular basis, Bristol isn't just a great place to live, but a great place to work too. A hotbed of creativity, innovation, research and tech. Hosting an abundance of shared workspaces and business incubators, it's no wonder Bristol is on track to be one of the UK's fastest growing cities for economic growth. Forget Silicon Valley, Silicon Gorge is where it's at.

A city booming with potential, it's the perfect place to discover yours.



# No city limits.

Neighbourhoods. Districts. Villages. Each one boasting its own unique character and vibrant social scene. Together, they're what give this compact city its big city feel.

Easily explored by foot, bike, bus or boat.  
Where will you discover first?



## Clifton

Home to some of Bristol's most iconic landmarks, including Brunel's Suspension Bridge, the Observatory and Clifton Village. It's the perfect place for an afternoon of tea, cake and window shopping.



## City centre

From Cabot Circus' high street names to St Nicks Market – the oldest market in Bristol, which serves up some of the best food around – the city centre has something for everyone.



## Gloucester Road

The UK's longest continuous stretch of independent shops and quirky pubs – and the epitome of Bristol's proudly independent spirit.



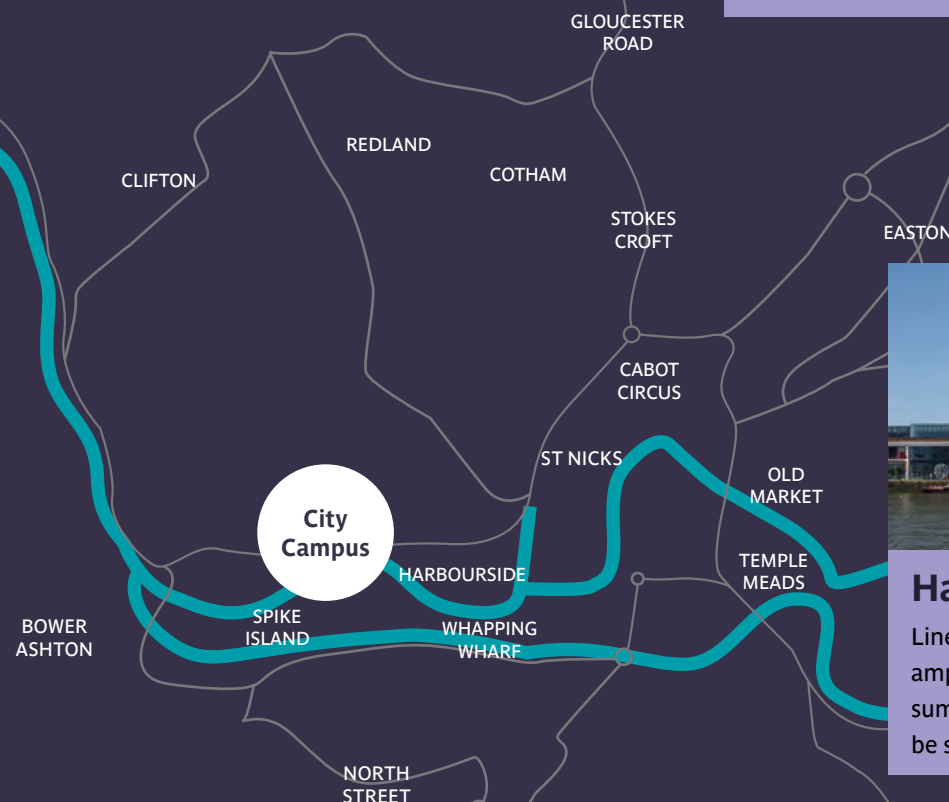
## Stokes Croft and Montpelier

Undeniably cool and creative, it's home to colourful street art, artist residences, cafés, restaurants and independent art cinemas. But it's at night that Stokes Croft really comes to life with its busy bars, clubs and hideouts.



## Bedminster and Southville

For exhibitions, theatre shows, live music and a bustling weekly food and crafts market, head to the Tobacco Factory. Love street art? You're in luck. Upfest, Europe's largest street art festival takes place here annually.



## Harbourside

Lined with bars, restaurants, cafés and an amphitheatre that hosts live music in the summer – the Harbourside is the place to be seen when the sun's out.



## Wapping Wharf

There's lots to see, do, eat and drink in this popular hotspot, located on the waterfront. Home to an eclectic mix of eateries and independent shops that cater for every taste and budget.



# Get busy. This city has it all.

**Music? Arts? Culture? Sports?**  
**Whatever you're into, you'll**  
**find it – every day of the week.**

## Inspiration on tap.

There's no chance of getting stuck in a creative rut in this city. Get your regular dose of inspiration by visiting one of these original Bristol institutions.

### Bristol Old Vic

The oldest continually working theatre in the UK. Visit here for the most nationally celebrated, experimental and pioneering theatrical performances of our times.

### Watershed

The leading film, culture and digital media centre in the South West – check out its jam-packed schedule of cinema exhibitions, talks and festivals to awaken your imagination.

### Aerospace Bristol

As the home of supersonic, Bristol played a crucial role in the history of aviation. Discover ultimate feats of engineering and don't miss your chance to board the Concorde, the world's fastest ever passenger jet.

### Planetarium

For something out of this world, explore the Solar System at the UK's only 3D Planetarium. Part of We The Curious, this giant silver ball of discovery takes flight every week – both day and night – so it's never been easier to go galaxy-hopping.

## Love your music live.

Considered the birthplace of dubstep and trip-hop, Bristol has a live music scene that's hard to beat. Satisfy your musical cravings at these top venues.

### Thekla

One of the UK's most iconic music venues, this old cargo ship offers an eclectic lineup of the world's best up and coming bands all year long. As well as legendary club night, Pop Confessional.

### The Fleece

Bristol's biggest independent music venue hosts live music and club nights, seven days a week. Everyone from Radiohead to Amy Winehouse, Oasis to Ed Sheeran have played here.

### O2 Academy

Get your fix of chart-topping artists, big name DJs and hot new talent at the O2. Located in the heart of the city, take your pick from its enviable lineup of events and gigs.

### Colston Hall

Fancy something a bit different? Head to the city's largest concert hall, for classical concerts, orchestras and entertainment from the world of rock, jazz, folk and comedy.



## High street giants. Independent gems.

Whether you're forever on the hunt for something unique or you're a sucker for the latest trends, Bristol's shopping scene has you covered.

### Cabot Circus and The Mall at Cribbs Causeway

Bristol's two biggest shopping destinations are home to all the usual high-street suspects and department stores, including Zara, Topshop and Topman, Urban Outfitters, House of Fraser and John Lewis.

### Gloucester Road and Park Street

These are your go-to destinations for rare finds. No trip to Park Street is complete without a visit to the iconic Uncle Sam's American Vintage Clothing Store for one-of-a-kind pieces.



## Festival central.

Bristolians love festivals, fact. You'll find an all-year-round festival line-up, like nowhere else. And there's a festival for everything. From wellness to beer, BBQ food to vegan, balloons to boats, music to street art, comedy and films. Better yet, lots of them are free.

### St Paul's Carnival July

Celebrating Bristol's African Caribbean culture, this epic street festival is a riot of music, dancing, food, costumes and spectacular parades.

### Harbour Festival July

Bristol's biggest festival brings over 250,000 people together to celebrate the city's maritime history – think live music, street food, circus acts and tall ships.

### Bristol International Balloon Fiesta August

Nightglows to music, firework displays and 500 balloons launching into the skies. Forget fiesta, this is Europe's largest balloon spectacle.

### Bristol Festival of Ideas all year long

Get your fill of delicious brain food and check out this festival's inspiring programme of discussion and debate throughout the year.



### Here are a few more festivals to add to your calendar:

- Upfest: Europe's largest Street Art and Graffiti festival – **May**
- Love Saves The Day – **May**
- Bristol Sounds – **June**
- Bristol Pride – **June/July**
- Comedy Garden – **July**
- Viva! Vegan Festival – **December**

## Go outdoors.

You'll find plenty of open green space to bike, run, walk, read, meditate – and just be you. With over 328 parks to explore, it's easy to get your fill of fresh air.

### Ashton Court Estate

Spanning a whopping 850 acres of woodland and grasslands, this picturesque country park and mansion is best explored by bike, or on foot, to fully take in its stunning views of the city. And it's also where you'll find Bower Ashton, part of our City Campus.

### Castle Park

Nestled in the heart of the city, this park comes to life during the summer months as the perfect spot to congregate and make plans with friends.

### Brandon Hill

Hidden behind Park Street, Brandon Hill is Bristol's oldest park and is a popular picnic and BBQ destination. If you've got the energy, climb to the top of Cabot Tower for epic views.

### The Downs

This huge expanse of parkland is just on the edge of the city, but it's easy to think you're in the middle of the countryside. Not only is it home to lots of sporting events, but an annual music festival takes place here too.

## Get in on the action.

Ashton Gate is the city's largest and most impressive stadium (see right). Home to Bristol City Football and Bristol Bears Rugby. The stadium also hosts summer concerts with acts including the Spice Girls and The Killers.

There's also Memorial Stadium, home to Bristol Rovers F.C. And check out the Bristol Flyers Basketball team. Also, thanks to its many waterways, this city is built for rowing. And did we mention that there's perfect surf all year round? Just head to The Wave, an inland simulated surf destination.



Find out more about what our city has to offer you at [uwe.ac.uk/bristol](https://uwe.ac.uk/bristol)



# Transport links. Getting in, out and around the city.

There's no need for a car in Bristol – you can reach most places easily by foot, bike or public transport. What's more, boasting excellent rail links and an airport, it couldn't be easier to get out of the city and visit friends and family, further afield.



## By bike

Named the UK's first cycling city, Bristol is built for cyclists. Don't have a bike? Try our affordable bike hire scheme.

## By boat

Bristol Ferry Boats provide a scheduled waterbus service to help you get around Bristol's Floating Harbour in style.

## By bus

It's easy to get around the city by bus and metrobus. Bristol Bus Station offers cross-country services and Frenchay Campus has its own Megabus and National Express stop.

## By train

Bristol Temple Meads and Bristol Parkway Railway stations connect you to the rest of the country, as well as local and inter-city services.

## By plane

Bristol Airport connects the South West to hundreds of destinations across Europe and the rest of the world. Located just a few miles south of Bristol's city centre, it's easy to get to and from the airport, 24hrs a day via the Airport Flyer – Bristol Airport's direct bus route.



# Find your campus.

## Frenchay Campus

- Our main campus.
- 15 minutes bus ride from the city centre.
- Here you'll find our Students' Union, our 24/7 Library, sports facilities, shops and numerous cafes, bars and restaurants.

### Accommodation options

- Student Village
- Wallscourt Park
- Carroll Court

## City Campus

- Locations in and around the city centre.
- Cool blend of urban spaces and tranquil harbourside studios.
- Specialist library.

### Accommodation options

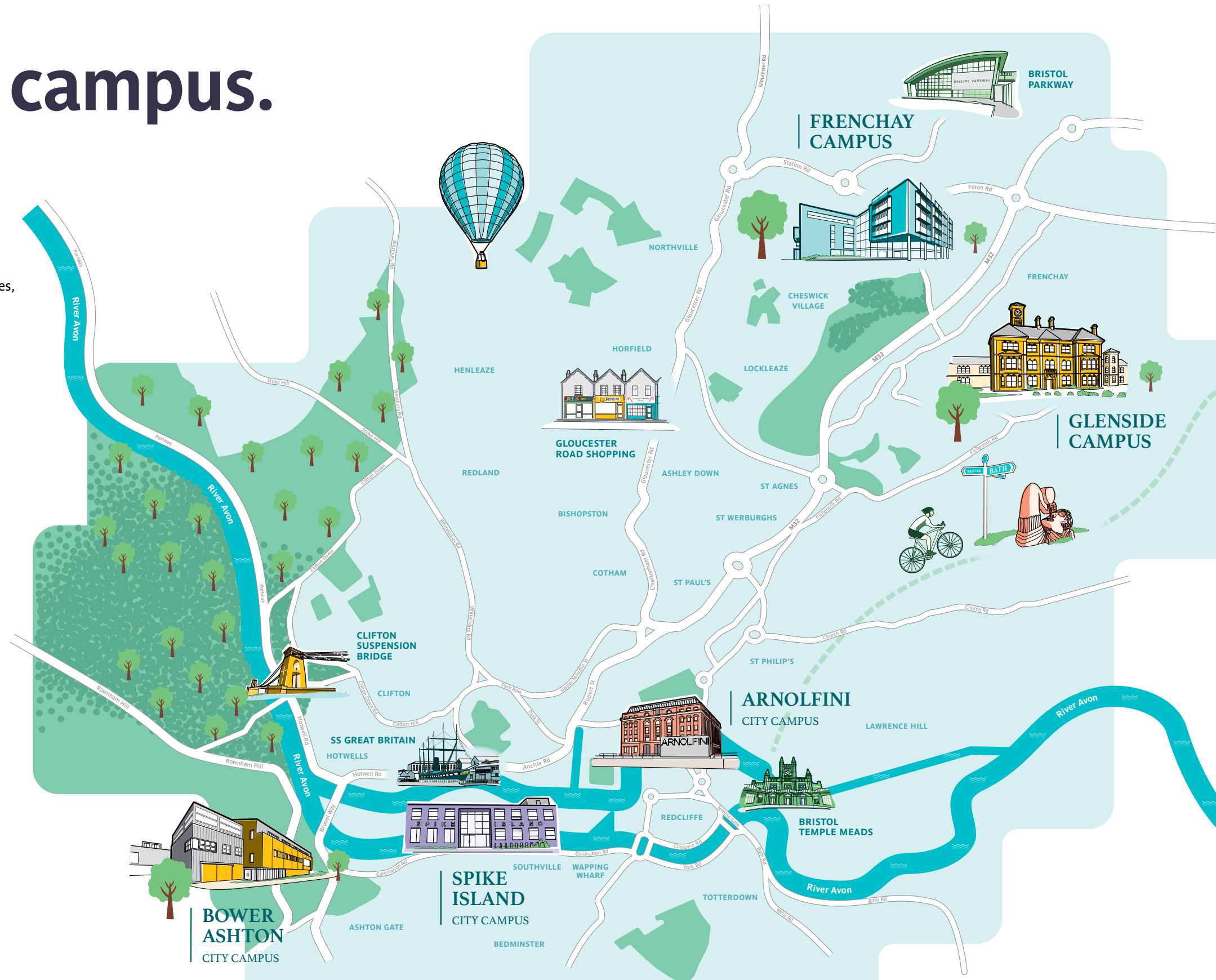
- Blenheim Court
- Marketgate
- Phoenix Court
- Nelson and Drake House
- Host Transom House

## Glenside Campus

- Set in picturesque grounds in Fishponds.
- 15 minutes bus ride from the city centre.
- A short walk to Fishponds High Street, home to independent restaurants and shops.
- Specialist library.

### Accommodation options

- Glenside
- The Hollies





# Built for success. Invested in you.

How can we help you be the best you can be? By creating the best environment for you to study in. That's why, over the last five years, we've invested £300 million into our facilities – creating the most effective, empowering setting for your studies. From our stylish cafes and lounges to our 24 hour library, robotics laboratories, study zones and simulation suites – we've set you up for success.

## Engineering the future.

Our state-of-the-art Engineering building is designed to revolutionise the way engineering is taught. Featuring engine test cells, dedicated collaborative learning spaces and all of the latest high-tech equipment.



Discover more of what we can offer you at [uwe.ac.uk/ourfacilities](https://uwe.ac.uk/ourfacilities)





### Built for business.

The result of a £55 million vision, the Bristol Business School building is the largest on Frenchay Campus. Inside, you'll find shared social and learning spaces – designed for collaboration between business, staff and students. It's also home to the Bloomberg city trading room and mock court rooms. Great for putting your new skills to the test.

### On point legal practice.

Situated within the Bristol Business School, our mock court rooms bring learning to life for our students. Equipped with the latest recording equipment, you can practise your skills in a practical setting.



### Designing your way to the top.

Combining award-winning design studios with an impressive suite of technology. Our architecture facilities are a cut above the rest. A mix of traditional and highly creative learning environments means you'll graduate ready for a career in architecture.

### Envirotron.

Based at Frenchay Campus, this clever greenhouse is designed to transform research and partnerships in the areas of biodiversity, conservation, environmental change and food security. Using environmentally-friendly LED lighting, the Envirotron enables researchers to experiment with a wide range of conditions.



### Skills and simulation centre.

Step onto our real replica hospital ward at Glenside Campus – complete with consultation rooms, maternity and children's unit. The centre uses all the same equipment that's used in NHS hospitals, from the flooring to birthing pools. So you can learn how to deliver effective healthcare in safe surroundings.



### A very special effect.

Designed to blend in with the scenic surroundings of Ashton Court conservation area, our award-winning Film Studio building is home to industry-standard production film making, as well as stop motion animation, CGI studios, sound recording, colour grading studios, editing suites and two large photography suites.

### Fashion that's a cut above.

Our stylish fashion studios and workshops are located across our City Campus and are home to all the industry-standard equipment you need. From Silk-screen to digital embroidery machines – the possibilities are endless.





# Welcome home.

Choosing where to live is as exciting as it is nerve-wracking, especially when it's your first time moving away from home. But you can put those nerves to bed. Our excellent range of accommodation options, both on campus and in the city centre, will help you feel at home from the moment you arrive.

## Campus living.

Get to lectures in minutes. Have brilliant facilities right on your doorstep; from sporty stuff to our library. Drop into the Students' Union (if you're on Frenchay campus) or campus cafés and bars whenever you fancy. Feel safe, supported and right at the heart of our student community.

## City living.

If you want city living, there are plenty of options. Choose one of the centrally located, purpose-built apartment blocks, all with cafés, shops, bars and more right on the doorstep. All are well connected to our campuses by Metrobus, local buses and cycle lanes.

## What to expect.

Wherever you choose to live, you can be sure it'll be safe, well-equipped and comfy. Here are the basics:

- A furnished bedroom with a bed, desk, TV point and fast internet – many are ensuite too.
- Modern kitchens – shared with a group of other students.
- Communal areas for chilling and catching up with friends.
- Laundry facilities and bike stores.
- CCTV and security team for peace of mind.
- Bills included – so no unexpected costs.

## How much will it cost?

Budget £111.77–£185.00 per week (based on 42 week let in 2019).

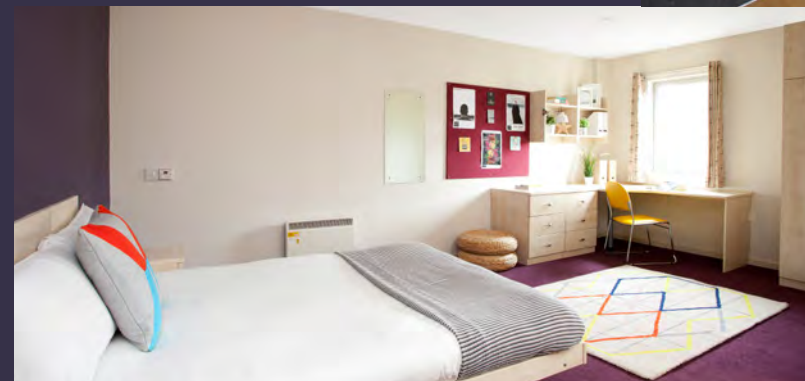


Find your new home at  
[uwe.ac.uk/accommodation](http://uwe.ac.uk/accommodation)

Wallscourt Park,  
Frenchay Campus



Blenheim Court,  
City centre



Student Village,  
Frenchay Campus



Juniper House,  
Glenside Campus





# Healthy body. Strong mind.

We know just how important it is to stay fit and healthy. It not only boosts energy levels and focuses the mind but it also helps you de-stress and feel happier. That's why we're keen for you to take full advantage of our fantastic gym and sports facilities.

You'll find everything from climbing walls to squash courts, football pitches to our fitness studios. And with over 40 exercise classes a week and tons of sports clubs to choose from, it couldn't be easier to get fit and keep active.



Get involved at  
[uwe.ac.uk/sport](http://uwe.ac.uk/sport)

## MOVE

If you want to get moving, but aren't sure what sport moves you yet, sign up to UWE Bristol's MOVE. You can choose from a wide variety of fitness classes and activities – from Quidditch to tai chi, football to yoga. Why not give it all a go?

## Performance Sport

Olympian in the making? Then our Performance Sport programme is built for you. We'll make sure you get all the support you need to achieve your goal. Currently we're home to three Performance Sports; American football, basketball and squash.

## Team UWE Bristol

Show off your athletic prowess in one of our many sports clubs, which range from netball to sub-aqua. You don't need to be a super-human to join and it's a great way to make new friends.





# Express yourself.

Music moves us. It takes us places. Gets us going, chills us out. That's why we love it. Here at the Centre for Music, led by industry professionals and experienced academics on our Frenchay Campus, we passionately believe that music is for everyone.

Whatever your ability level, we'd love you to come and get involved. Do your thing. Help someone else do theirs. Whether you want to pick up an instrument for the first time, sing, or lay down some of your own tracks, come and check us out.



## The line-up.

Dance, electronic, beats, DJs, MCs, jazz, classical, musical theatre... You get the idea. We embrace every genre and every single aspect of music, music production and performance. We offer music lessons, vocal coaching, production and lighting workshops. If you can listen to it, we cover it.

## What's happening.

We run a full programme of music events throughout the year, from gigs to club nights to music festivals. Our Festival of Sound is a huge, family friendly festival with live performances. Amplify sees live performances from urban and underground artists, DJs and labels. We also offer taster sessions in everything from guitar and jazz ensemble through to music production and DJing.

## \*Mic drop.\*

As a member of the Centre for Music, you'll have full (free) access to our rehearsal studios and practice rooms (doors are open seven days a week) as well as free music training and subsidised instrument teaching. Plus you can join any of our professionally directed groups. And membership doesn't cost you a thing. Yes, it's completely free for UWE Bristol students. So come and join our 800-strong music community and get involved, your way.



Sign yourself up at  
[uwe.ac.uk/music](https://uwe.ac.uk/music)





# Join in. Speak up. Be more. Your union.

The Students' Union (SU) is your voice at university. Elected by you, the Union President and members stand up for your issues and make sure your ideas get heard. The Union also provides you with great bars, shops and cafés on each campus.

→ Make your ideas heard at  
[thestudentsunion.co.uk](http://thestudentsunion.co.uk)



**Precious**  
BA(Hons) Accounting and Finance  
MSc Cyber Security  
SU President



## Why did you want to become SU President?

I decided to run for the role of President because I wanted to represent the key issues affecting students. Having studied at UWE Bristol for over four years, I believed I had the relevant skills and experience to be able to improve the student experience and improve diversity within the university. It was very important to me to have this representation.

## What's been your biggest SU President highlight so far?

Within my role, I wear many different hats – as a President, as a trustee, but also as a student and friend. I sit on the Board of Governors and the academic boards, helping make key decisions that affect students directly. Because these decisions are made by top people in the university who are not students, they're unable to offer the same input that I would. It's been huge for me to be able to have that impact on key decisions.

Another highlight is to be able to campaign on issues that can better represent the diverse student community that we have. This includes Black History Month. I led a lot of the activities we put together. It's a major highlight for me because it was very successful but also many students benefited from it. I was able to plan activities that I wanted to see when I first joined the university.

## What sort of activities took place?

We had a Black Hall of Fame project that recognised and represented our Black students, staff and alumni. And we had an event relating to tackling UWE Bristol's attainment gap and we invited speakers from across the UK. We also had an event that was open to the Bristol community called 'My fro and me' – an event discussing the challenges black people face with having natural hair within the workplace.

## How does the SU support its students?

We have over 160 sports clubs and societies on offer and encourage students to set up their own society when they can't find one they'd like to join. When I was a student I set up my own society, Culture Fusion, and I gained a lot of skills from that.

## What's your advice to new students?

Speak up and get involved in things that will improve your student experience. So, if anyone has any concerns or any issues don't be afraid to speak to someone. Say whatever you want to say, there will be someone to support you – but the first step to take is to speak up.



# Don't sit on the sidelines. Get involved.

## This is your student community.

Our students come from many different backgrounds and cultures. In fact, you'll meet people here from over 166 countries – all with different ideas, perspectives and beliefs. Choose to make the most of it. Be social. Be curious. Step outside of your comfort zone and try new things. You won't just learn about other people, you'll learn about yourself.

To help get you started, there are over 160 sports clubs and societies to join. And there's something for everyone. From films to airsoft, beekeeping to anime. Whatever your hobby, passion or interest – it's likely there's a society for it. And if there's not? It's easy to start one yourself.



### Venturers Society

**We're a society that uses entrepreneurship to drive positive change in our community. Connecting people and learning business management practically is half of what we do."**

**Ahmed**

UWE Bristol student and Society's President

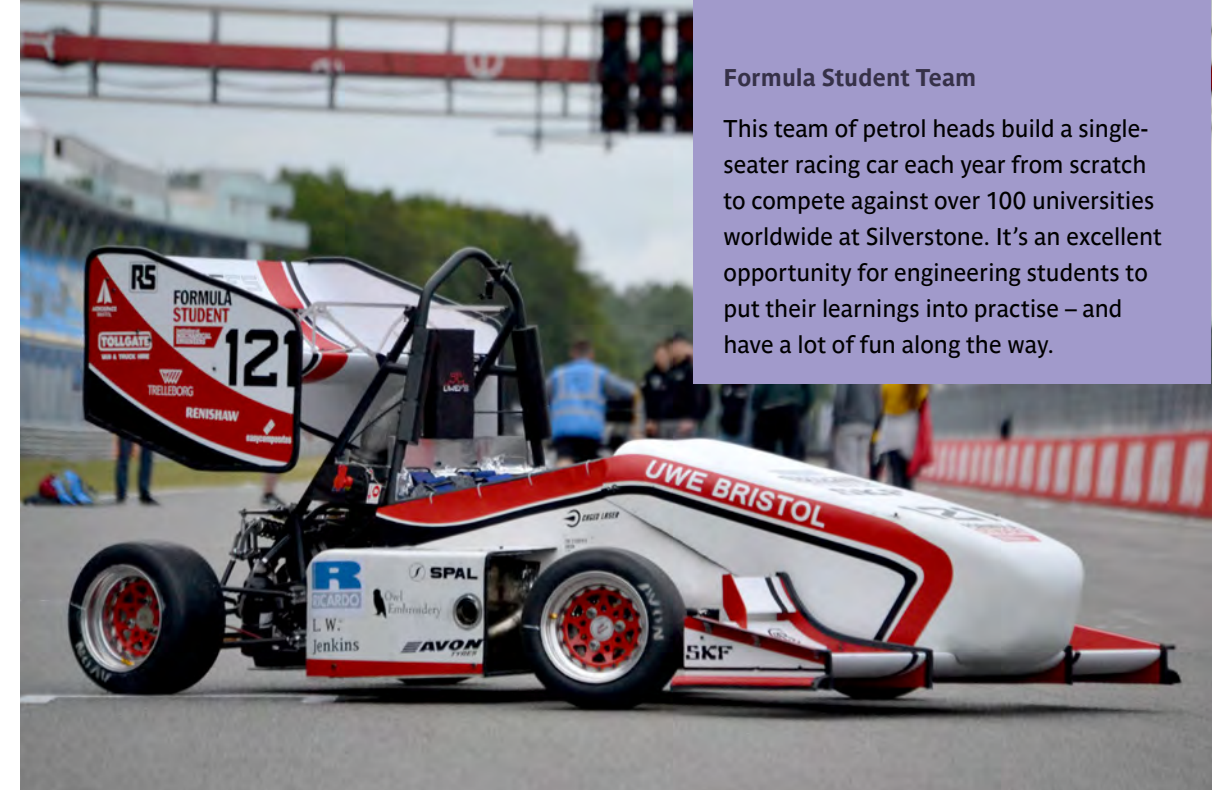


### American Football Club

**In the past, the team has had players who have struggled with their mental health. It is amazing to see how their fellow teammates have been there for them and helped them through the bad times."**

**Tré**

UWE Bristol student and Club's Vice-President



### Formula Student Team

This team of petrol heads build a single-seater racing car each year from scratch to compete against over 100 universities worldwide at Silverstone. It's an excellent opportunity for engineering students to put their learnings into practise – and have a lot of fun along the way.

### Women's Football Club

**Being part of UWE Bristol Women's Football has enabled me to take time away from my course and have something to ease the stress. I have been lucky enough to meet my best friends here by playing football."**

**Lauren**

UWE Bristol student and Club's Social Secretary



### Culture Fusion Society

This society believes that a dancing spirit is a happy one. Showcasing dances, creative heritage and culture from Africa, the Caribbean and Latin America, Culture Fusion brings people together and introduces them to a new world through dance.



Find out how you can get involved at [uwe.ac.uk/joinin](https://uwe.ac.uk/joinin)



# Ready to face anything.



We know that heading to university is a big deal. From newfound freedom to new people, city and routine, there's a lot of newness and uncertainty to take in. All of us will experience challenges at some point in our lives. It's our aim as a university to give you all the tools you need to get on and succeed in life – and that means helping you develop the skills you need to look after your mental health in the same way as your physical health.

## Built into the curriculum.

Whether you call it wellbeing or mental health, it's a wide, ever-changing spectrum that we all have to find our way through. The way you think impacts how you feel. And how you feel impacts how you react to challenges.

That's why we've developed our Five Secrets to Success, a wellbeing module that will help you develop the skills you need to navigate the challenges of university. Because there will be challenges. But it's how you respond to them that really matters.

The wellbeing module is focused around five key themes:

1. Discovering your student self.
2. Engaging with your course.
3. Growing your confidence.
4. Visualising your future.
5. Connecting with others.

You'll be asked to complete each theme before arriving at UWE Bristol. Supported by podcasts, a short film and simple, reflective tasks to get you in the right mindset – you'll be left feeling ready to take on anything and everything.

## Your health and wellbeing means everything to us.

That's why we have a broad range of support options, tailored to what you need.

From an NHS doctor's surgery on Frenchay Campus, to trained counsellors both online and in person, partnerships with Bristol-based support networks and our **disability support service** – there's always somebody to help you develop the right tools and coping skills to handle anything.

Need a listening ear and a cup of tea in the small hours of the morning? Our **Out of Hours Team** is available from 19:00 to 07:00 during term-time. Either on the phone or in person, they'll help put your mind at rest and work out your next steps.

If you don't have family support to rely on – you can rely on us. Our **UWE Cares** package is set up to help estranged students, student carers and anybody who has experienced living in supported housing or foster care.

In addition to your Academic Personal Tutor, you can make use of **Peer Assisted Learning (PAL)** – a student-to-student scheme where our more experienced students help those who are new to the university. PAL mentors can help with all sorts, from studying tips to how to stress less.



Get yourself in the right mindset at  
[uwe.ac.uk/wellbeing](https://uwe.ac.uk/wellbeing)





Choose  
to  
stand out



# Do university right.

If you want to just get a degree, don't apply. At UWE Bristol, our focus is on making sure you stand out from the thousands of other students who graduate every year in the UK. It's no coincidence that we're in the top 10% of UK institutions for sustained employment three years after graduating and 95% of our graduates are in employment or further study within only six months of graduation (Destination of Leavers from Higher Education Survey 2018).

Our links to over 7,000 employers have helped shape many of our courses. From every module taught to every skill learned – you'll find it all relevant to your future career.

And whether you want to pursue a career, become an entrepreneur or continue your studies – we'll support you at every step. From supporting you to arrange industry placements and opportunities abroad, to giving you specialist enterprise mentoring.

We're here to challenge you. To push convention, think big, take risks. To leave your comfort zone behind and expand your horizons.



# Well connected.

## Airbus

The world's largest airliner manufacturer, Airbus employs over 130,000 people globally. Many of the apprenticeship, graduate and yearly intern positions have come from UWE Bristol. As well as offering a number of industrial placements to students, and supporting many more in final year projects, Airbus attends our graduate careers events. They also partner their employees with UWE Bristol students for the Association for Project Management (APM) Challenge.



Airbus has a longstanding relationship with UWE Bristol, and a significant number of our workforce in Bristol are UWE Bristol alumni. Our graduates and apprentices contribute importantly towards Airbus's growth, fulfilling roles as managers, leaders and technical experts. The programmes that we deliver are extremely important for our Filton site's continued success."

**Ryan Davies**

Head of Early Careers Programmes  
Airbus

## Arnolfini

Bristol's internationally renowned Centre for Contemporary Arts, Arnolfini is an integral part of our City Campus. Over 300 UWE Bristol students are based inside its iconic harbourside building. Thanks to this partnership, we've built a city centre creative powerhouse. This means that our students are able to benefit from exciting opportunities, internships, research and community-based collaborations and lecture series with world-renowned artists.



For almost 60 years, Arnolfini has been recognised for its commitment to contemporary arts practice, widening engagement and presenting many different art forms in its galleries, theatre and studio spaces. We're part of the City Campus and have created an exceptional creative and cultural community, bringing together students, academics and communities across Bristol."

**Gary Topp**

Director  
Arnolfini

## Your career starts here.

It's not just what you know, it's who you know too. Our partnerships with industry-leading organisations and businesses are what keep our courses relevant and your future skills in demand. Some of these partners play an important role in shaping course content and modules – making sure you get to experience the day-to-day, real-world challenges in your chosen field.

What's more, these connections give you access to excellent placement opportunities – helping kick-start your career.

## Lloyds Banking Group

As one of the UK's leading financial services groups, Lloyds Banking Group (LBG) is home to some of the biggest names in finance. As a Course Connect Partner for BA(Hons) Banking and Finance, LBG supports course modules with a valued range of activities, from interactive presentations on robotics to soft skills workshops. They also play a hands-on role in helping our students prepare for the world of work.



We've built a robust relationship with UWE Bristol lecturers and course director leads. This is complemented through our seat on the UWE Bristol Board, where we help to shape discussions for course content and direction. As an employer, we look to add value by ensuring the courses provide a 'true to life' perspective for students."

**Caron Ricciardi**

Senior Business Development Manager  
Lloyds Banking Group

## North Bristol NHS Trust (NBT)

NBT offer our healthcare students a huge range of clinical placement opportunities – including specialist areas such as renal, neuro, burns, emergency and critical care. Many of our student nurses, midwives and allied health professionals find their clinical experience invaluable – and the majority choose to work at NBT after qualifying. With constantly evolving clinical needs, NBT work with us to offer innovative apprenticeship programmes that meet demand.



We really value our close, collaborative relationship with UWE Bristol, where many of our clinical staff have studied. The partnership means that we can offer students excellent hands-on experience and wide-ranging employment opportunities in one of the South West's biggest hospitals, as well as providing our existing staff with ongoing professional learning and development."

**Helen Blanchard**

Nursing Director  
North Bristol NHS Trust



Discover more at  
[uwe.ac.uk/workingwithemployers](https://uwe.ac.uk/workingwithemployers)

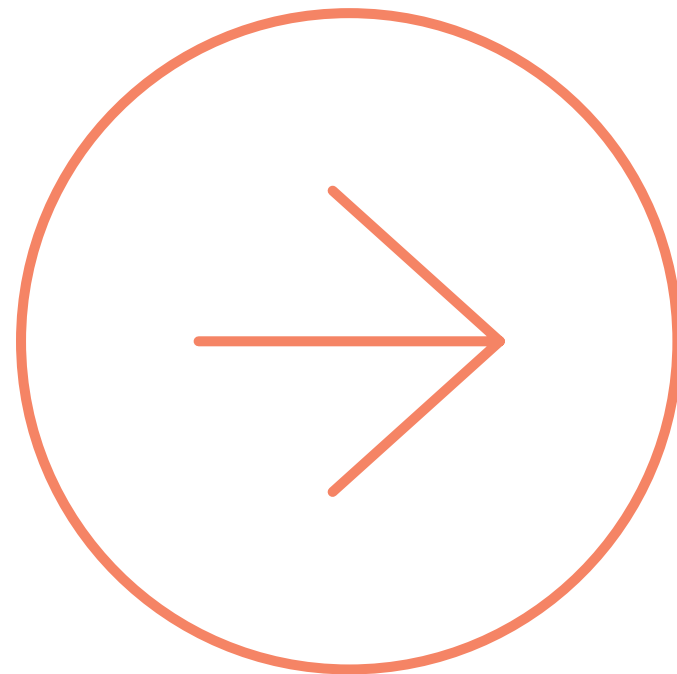


# Real experience counts.

No matter how much we prepare you for the world of work, there's nothing like the real thing. That's why many of our courses include placements. Lasting anything from a few days to a whole year, you'll get first-hand experience in your chosen industry. And compared to graduates with no work-based experience, your employment chances will be increased substantially.

Not only will you learn valuable skills on the job, enhance your CV, make industry contacts and potentially secure your first employer – you'll also find out whether it's the right career path for you.

Real experience doesn't stop at course placements though. When it comes to your learning we want to take you far beyond the classroom. From getting involved in live projects and simulations, to field trips and insight sessions – there's a lot to get you ready for the world of work.



**Jacob**  
BSc(Hons) Wildlife Ecology and Conservation Science  
Intern placement at Bristol Zoo Gardens



## How did a placement help you?

My placement year pushed me outside of my comfort zone. I've had countless new opportunities, made unforgettable memories and developed key life skills alongside professional ones. I now have a really strong foundation on which to build a future career within conservation.

## Your advice to other students?

Put yourself out there. The reason I secured this placement was thanks to my volunteering work at Bristol Zoo. I knew what was expected and needed in the role, so I was able to step into the position when they needed someone. If you don't put yourself out there, those great experiences will pass you by.

**Molly**  
BA(Hons) Business and Human Resource Management  
HR industrial placement at GlaxoSmithKline (GSK)



## What did you do on placement?

One of my responsibilities was to organise tours at different sites for around 250 placement students. I got to learn so much about what goes on at GSK that I didn't know existed and it was a brilliant way of networking with people that I would never normally meet.

## What was your highlight?

My highlight has been the inspirational and motivational people that I've met on my placement, who've guided and coached me – giving me the confidence to explore every avenue that's open to me and helped me begin to realise my full potential.



Get ready for the world of work at  
[uwe.ac.uk/placements](https://uwe.ac.uk/placements)



# Make a difference, to the community and your CV.

We believe that you get more back when you give a little in return. For starters – you’ll get a fresh new perspective, CV-enhancing experience, confidence and new skills. We can even connect you to opportunities related to your potential field, so that you gain worthwhile experience and make industry contacts. Working with over 600 not-for-profit organisations, there are so many opportunities to get involved.

## Rise to the challenge.

Every year we hold The Grand Challenge. A challenge that mobilises the energy, enthusiasm and brain power of our students and staff to make a difference to a real-world problem – like homelessness.

→ Find out how you can make a difference at [uwe.ac.uk/volunteer](http://uwe.ac.uk/volunteer)



**Amy**  
BSc(Hons) Wildlife Ecology and Conservation Science  
Winner of Volunteer of the Year Award at Celebrating UWE Talent





As Sustainability Officer for the Students’ Union, Amy has been at the forefront of encouraging 30,000 students to make environmentally conscious choices.

### What are you most proud of in your role?

I led 13 passionate students to implement several innovative campaigns. These included a Plastic Detox, where 209 students pledged to reduce their single-use plastic consumption. As a result UWE Bristol drafted a single-use plastics policy. The New Period was another hugely successful campaign, where we successfully lobbied the NUS to stock menstrual cups.

### What have you learned through volunteering?

Through my 800-hour (and counting) dedication to volunteering, I can demonstrate to employers my strong work ethic and determination to champion sustainability in all my endeavours. I’ve also developed my confidence, leadership, event management, and campaigning skills. Balancing this alongside my studies has improved my ability to thrive under pressure.

**Inayat**  
BEng(Hons) Aerospace Engineering with Pilot Studies  
Reading buddy at Glenfrome Primary School





Glenfrome is a primary school in an ethnically diverse area of Bristol. Its pupils speak over 30 different languages and 40% are from families who don’t speak English.

### Why did you choose to volunteer?

I wanted to get involved in something vocational. I hadn’t volunteered before and I wanted some experience to go on my CV. I’d also never worked with children before.

### What was it like?

The children are really eager to read, and to be honest, I wasn’t like that when I was at school. My family also didn’t speak English at home and I didn’t have this kind of support at school. It’s really rewarding to be able to offer it to someone else. You can definitely see their reading improving, which is really satisfying.



# Go further. Go global.

Comfortable never changed the world. That's why we encourage you to explore your options abroad. Discover what life's like studying for a year in a different country or try working for one of our international partners. There are plenty of teaching and volunteering opportunities on offer, whether you want to get involved for a week or a year.

From experiencing different customs and cultures to learning new languages and making lifelong friends – you might even discover a new side to yourself.

“

**As someone who wants to travel and work abroad in the future, my placement gave me first-hand insight into what it's actually like to live and work in a different country.”**

**Lucy**

BA(Hons) Drawing and Print

Lucy worked as an Assistant Producer in Madrid, Spain.

“

**I would recommend studying abroad to other students. Not only do you get the chance to specialise in something totally different, but you get transferrable skills, like emotional resilience – which will help during your exams, further studies and future career.”**

**Katerina**

BSc(Hons) Psychology

Katerina spent a year studying Artificial Intelligence in the Netherlands.

While studying for her BSc(Hons) in Nursing (Learning Disabilities), Catherine had the chance to swap North Bristol for South Africa – on a volunteering placement.

We caught up with Catherine and asked her to tell us about Project Zulu and how her course at UWE Bristol is giving her the skills and confidence she needed to take on this exciting overseas challenge.

## **What is Project Zulu?**

It's a UWE Bristol based charity supporting educational development in the Madadeni Township, South Africa. Trainees provide valuable experience for pupils and staff at Madadeni's six schools by introducing new learning approaches and resources.

## **What was your experience like?**

It added to the confidence, knowledge and ability that I'd gained through my degree. I realised that the skills I'd learned at UWE Bristol were transferrable – so will help me in the future, wherever I'm based.

## **What was your highlight?**

I had a great sense of team spirit with the girls that I went with. We were able to provide each other with a support network and shared common ground in health and social care.

## **Your advice to other students?**

Speak to other students or graduates who've already done it. I'm sure they'd be more than happy to share their experiences, both good and bad. I'd definitely recommend going global to all UWE Bristol students.



Discover what we can offer you at [uwe.ac.uk/goglobal](https://uwe.ac.uk/goglobal)



# Your dream job? Start now.

From practical career advice and mentoring, to CV writing workshops and tools that help you find out where your talents lie – we're here to help you bag your dream job.

## **UWE Bristol Careers Toolkit app**

Your very own careers and enterprise team in your pocket – 24/7, 365 days a year. This app helps you finesse your interview skills, build your CV, career test yourself and loads more.

## **Career coaching**

Our qualified professionals are on hand to provide you with the tools you'll need to develop a career plan. From working out what career options are right for you through to preparation for interviewing, it's all here for you.

## **Drop in and chat**

If you want to chat about all the opportunities open to you, including enterprise, volunteering, global experience, further study, or just want some career ideas – we offer a range of drop-in and appointment services to help.

## **Equity Programme**

Equity is for UK Black, Asian and Minority Ethnic (BAME) students, and is aimed at unlocking talent through building BAME students with the skills, confidence and networks to realise their potential and succeed in their chosen career.

## **Alumni Connect**

This online tool connects you to our amazing alumni all across the world. You'll have access to industry experts, professional contacts and local connections – you can even find a mentor.



Find out how we can support you at  
[uwe.ac.uk/careers](https://uwe.ac.uk/careers)





# Get enterprise ready.

Whether you want to start your own business or not, being enterprising is crucial to your future success. That's why it's central to what we do.

For us, enterprise is about being able to identify new opportunities, think creatively, be bold and bring ideas to life. It's about having the skills you need to get hired. From leadership to innovation, commercial awareness and problem solving to decision making and planning. Here's how we can help you hone your enterprising spirit.

## Join Enactus

Want to answer real world challenges and make a difference to people's lives – all whilst gaining the business acumen, experience, skills and network you need to build a brilliant career? Well you can do just that by joining Enactus. What's more, as a member of an Enactus team, you'll join a worldwide network of more than 70,500 other students.

## The Foundry

This disruptive technology space is home to our enterprise studios where you can join us for hackathons and immersive technology events.



## Enterprise skills development workshops

We run a series of workshops to help develop your commercial skills. You'll learn everything from sales and networking, to finance and pitching.

## Ignite

Ignite is our Entrepreneur Support Programme that helps you take your business ideas to proof-of-concept. Giving you a range of support, tools, and guidance to help develop both you and your business venture.

## Student Ventures

Got a great business idea? We'll help you get it off the ground. With physical space, business support and funding available – we'll be on hand to help you at every stage of your entrepreneurial journey.

## Summer enterprise scholarships

Do you have a great idea that could change the world? Would you like the opportunity to engage the public in your research or on a topic that's important to you? Our summer enterprise scholarships allow you to do just that. Divided into two strands – the Start-up Scholarship and the Impact and Innovation Scholarship – you can use your summer to transform a business idea into reality. You'll receive £1,000 alongside mentoring to help bring your ideas to life, and access to a city centre retail unit to test trade and engage with the public.

## Innovation and enterprise calendar

Our jam-packed innovation and enterprise calendar will keep you busy throughout the year. You can take part in everything from an annual Dragon's Den style pitching competition to our Enterprise Festival and Pitch-athon – a live pitching competition, where you could bag £500.



See how you can get involved at [uwe.ac.uk/enterprise](https://uwe.ac.uk/enterprise)



**Being involved in the scholarship programme has been amazing. Totally life changing. I was well out of my comfort zone with almost 100% of it, but it's been wonderful to feel so supported and nurtured."**

UWE Bristol student on the Start-Up Scholarship



The equipment at UWE Bristol is what the professionals use, and I made brilliant relationships with some of my tutors and stay in touch with them. One of them is actually working on a film with me at the moment.”

**Lowri**  
BA(Hons) Filmmaking graduate  
Filmmaker



# This girl can direct, produce, write...

After graduating UWE Bristol with a first-class honours, Lowri premiered her first short film *Girl* at the prestigious BFI London Film Festival in 2018.

After critical acclaim, Lowri was nominated Best British Short Film for *Girl* at Leeds International Film Festival and won the BAFTA Cymru Award for Best Short Film in 2019.

*“I’m still absolutely over the moon about the win – it was all so surreal. I’m extremely proud that the film’s reached so many audiences and I hope it’s had a positive effect and started some conversations that might not have been had otherwise. I’m still in shock though. It was only meant to be a little university project!”*

Lowri made *Girl* in the Production 2 module of her UWE Bristol Filmmaking course. She pitched it for Production 1 but didn’t get greenlit. So pitched again second time round. Perseverance. That’s a very Lowri thing.

So what was it about the Filmmaking course at UWE Bristol that really hooked Lowri in? *“The course is very much what you make of it. For example, some of my friends were really keen to practise their camera skills. So they’d book out cameras and go out and shoot stuff in their spare time. Whereas I’d write and get feedback on my scripts.”*

Lowri’s still in Bristol and is currently freelancing as a filmmaker, working with big names including Channel 4 and the BBC.

*“Bristol is a wonderful place to live. It’s big enough that there’s a lot going on, with a great arts scene, but also small enough to feel a part of the community.”*

Lowri’s advice to future filmmakers, *“Be your own motivation and just go for it. Immerse yourself in it, keep trying, you’ll get rejections all the time but just plough through and you’ll get somewhere. Opportunities don’t just come to you. You have to make them yourself.”*





**UWE Bristol encouraged me to take a novel approach to law – and helped me see it as both dynamic and progressive.”**

**Ravi**  
LLB(Hons) Law graduate  
Human Rights Lawyer



# Waging war on data pirates.

Ravi is a Human Rights Lawyer best known for his ground-breaking work on data rights in the Cambridge Analytica scandal. In October 2018, he was named Human Rights Lawyer of the Year by the Law Society at their annual Excellence Awards.

Ravi has written extensively on the impact of developing technologies on rights and their constitutional impact – exposing the extent to which giant corporations manipulate personal data. Ravi acted for the claimants in the lead claims against Cambridge Analytica for political profiling. The organisation was accused of using people's data to influence elections and referendums.

Ravi says, *“Receiving this recognition was fantastic and a marker for the future of rights in technology. When I was a student at UWE Bristol I could only dream about winning such an award. It is a testament to the education received at UWE Bristol and the forward thinking I was embedded with whilst there. That ethos has carried me forward throughout my career and been allowed to flourish with those I have subsequently been lucky enough to work with.”*

Ravi's message to future law students, *“This is the start of a lifelong learning process. UWE Bristol will give you a firm foundation for understanding your own learning processes. You'll take this experience and mindset with you into your future career.”*



Throughout our course guest industry mentors would visit and provide a real insight to the exciting world of business.”

**Alice**  
BA(Hons) Business Team  
Entrepreneurship graduate  
Co-founder of Indus Four



# Building a business. From the start-up.

Alice is the CEO of Indus Four – the company she co-founded alongside other UWE Bristol alumni.

Indus Four is an automation technology company. It delivers automated solutions that increase productivity for all. Right now, they’re creating their first automated system. Their technology allows businesses to focus their efforts on their core competencies instead of repetitive tasks. Saving money, saving time, upping productivity. Win, win, win.

So why did Alice choose UWE Bristol?

*“Because of the city. I’ve always been interested in entrepreneurship and Bristol has a really vibrant start-up ecosystem. Although I didn’t know it at the time, this has proved to be really important when I set-up a company after graduating. Plus, my Team Entrepreneurship course helped me channel my interest in enterprise activities. The course was excellent in highlighting all the opportunities that were going on both within the university and within the city. We were encouraged to get involved with these, and were pushed to challenge ourselves by doing so.”*

Alice’s advice to future students, *“Throw yourself into the UWE Bristol experience, mix with lots of people from your course and other courses, and use the time to help shape your future.”*





Choose  
your  
passion



# What if you could change someone's life?

UWE Bristol LLB(Hons) Law students with prison officer LLB students, Kamiti High Security Prison, Nairobi



I've always been interested in human rights. Getting to go to Africa and volunteer on the project taught me that no matter how much someone is stigmatised by society, they're still human beings. It helped me determine that providing justice for people is what I want to do with my degree."

Nakita  
LLB(Hons) Law

## Faculty of Business and Law

**We believe you can – and we're confident you will.**

But who said you have to wait until you've graduated to put your professional skills into action? Through our Business and Law Clinic, students can start making a difference the moment they begin studying.

Our business and law students have the opportunity to develop legal and professional skills and commercial awareness, by taking part in pro bono projects. They work alongside professionally qualified lecturers and mentors from the legal and business worlds to advise individuals, start-ups and community organisations. For everyone involved, for society as a whole, this is doing good done right.

## African Prisons Project pro bono.

UWE Bristol undergraduates support LLB law students in East African prisons by providing reading and learning materials. Some of our law students have had the opportunity to develop their legal skills by teaching and working as tutors and paralegals in Uganda and Kenya with this UK charity.

Everyone involved in this pro bono project is immensely proud of the impact they're having on the academic outcomes and education of prison-based paralegals – and, in turn, on miscarriages of justice. It's transformative, life-changing work. And just imagine what it's done for their legal skills and their personal and professional confidence. All this, while studying at university.



# Write your own rules.

Surrounded by industry professionals, world-class tutors and passionate peers, against a collaborative modern backdrop. Our Bristol Business School building is the perfect environment to re-write the rulebook.

→ Find more information about our courses at [uwe.ac.uk/courses](https://uwe.ac.uk/courses)

94%

of UWE Bristol BA(Hons) Banking and Finance students were satisfied with the quality of their course overall.

Source: The National Student Survey 2019.



Thanks to our work with regional business, we hold the



Fact

Ranked 26th in the Guardian University Awards 2020 for business, management and marketing.

Bristol Business School and Bristol Law School has over

6,000 students  
+300 staff



96%

of UWE Bristol Law graduates are in employment or further study after six months.

Source: DHLE (Destination of leavers from Higher Education) survey, published 2018.

350 students

participated in Equity, a positive action student community offering identity coaching, employability and enterprise workshops and professional networking.

Shortlisted for the Times Higher Education Business School of the Year Award in 2017, 2018 and 2019.



# What if you made the unimaginable real?



Pepper, an intelligent robot for the home



It's satisfying to see myself progress my skills but it's even more satisfying knowing that the project I'm working on is for a good cause. Working in the HEARTS team gives me the opportunity to gain amazing experience that will help me in my future career."

Ethan  
BSc(Hons) Computer Science  
HEARTS team member

## Faculty of Environment and Technology

Making it real is exactly what goes on behind the doors of our Bristol Robotics Laboratory (BRL). Home to a vibrant community of over 300 academics from UWE Bristol and the University of Bristol, plus researchers and industry practitioners. Together, they're leading Britain's efforts to be the world leader in modern advanced robotics for our natural and human environments.

## Taking good care of the future – and good care of each other.

Could a robot help older adults with disabilities do the housework in their home? Could it support rehabilitation by motivating patients to complete vital at-home therapeutic exercises and activities?

HEARTS – Healthcare Engineering and Assistive Robotics Technology and Services – is a collaborative student team within the Bristol Robotics Lab. Right now, they're exploring how intelligent, socially-assistive robots can help people live independent lives in their own homes into old age.

One of the robots they are working on comes in the shape of Pepper, a socially assistive robot. HEARTS work shows that intelligent robots, integrated with smart home sensors and healthcare databases, have the ability to realise a range of assistive care solutions to support independent living for an ageing population. This is what we do. What our students do. What society needs us to do.



# Come and create the next big thing.

We're on a mission to harness the power of technological advancements and help build a better society. Join us and help to power the future and shape the lives of future generations.

→ Find more information about our courses at [uwe.ac.uk/courses](https://uwe.ac.uk/courses)

20<sup>TH</sup>

in the UK for  
Mechanical Engineering.

Source: Guardian League Tables 2020.



Thanks to our commitment to advancing women's careers in STEMM employment we hold the



6<sup>TH</sup>

in the UK for Architecture.

Source: Guardian League Tables 2020.



I'm now an Education Coordinator at ORCA headquarters, looking after community outreach, delivering workshops, managing a team and acting as a wildlife guide and conservationist. I've no doubt that my degree gave me the skills and confidence to achieve my goals and find my dream job. It's got me exactly where I wanted to be."

Anna  
BA(Hons) Geography graduate



100%

of UWE Bristol BA(Hons) Geography students were satisfied with the quality of their course overall.

Source: The National Student Survey 2019.

100%

of UWE Bristol BEng(Hons) Automotive Engineering graduates are in full-time professional or managerial employment or further education within six months.

Source: DHLE (Destination of leavers from Higher Education) survey, published 2018.





# Changing perceptions. Smashing stereotypes.

Harnaam Kaur, activist and Instagram influencer talking at UWE Bristol on "How to stay body positive in the era of social media" during Mental Health Awareness Week 2019.

## Faculty of Health and Applied Sciences

What if you could make a positive difference to society? Through our world-leading research in appearance and body image, we're challenging perceptions and helping people across the world build body confidence.

### Building body confidence.

Our Centre for Appearance Research (CAR) is the world's largest research group focusing on the role of appearance and body image in people's lives. They're actively tackling a global health issue that has affected us all at some point, either directly or indirectly.

From social media to television to magazines, we're bombarded with unrealistic appearance ideals. These so-called ideals have a negative impact on how we think we should look. They are contributing to serious health problems, like eating disorders and depression. That's why CAR exists.

CAR plays an important role in developing educational programmes that help millions of people across the world build body confidence. We collaborate with charitable organisations, NHS Trusts, businesses, schools, universities, the media and policymakers across the UK and overseas. All with one aim: to increase the acceptance of diversity in appearance and promote positive body image. Not only that, but all of the research that CAR undertakes helps to inform our undergraduate courses, like our BSc(Hons) Psychology, so our students benefit too.



As part of my undergraduate course, I've been taught by postgraduate students who are involved with the CAR programme. The module is very relevant as it tackles issues that are currently prevalent in society and in particular adolescents, including body image, eating disorders and stigma around visible difference. I believe that by continuing to develop this module, CAR can work to tackle these ongoing issues by raising awareness and inspiring more students to pursue this field of psychology."

Britani  
BSc(Hons) Psychology



# Discover the great unknown.

Be inspired by and learn from experienced health and social science professionals in world-class labs and simulation facilities.

➔ Find more information about our courses at [uwe.ac.uk/courses](https://uwe.ac.uk/courses)



**100%**  
of UWE Bristol Environmental Science students were satisfied with the quality of their course overall.  
Source: The National Student Survey 2019.

**100%**  
of UWE Bristol BSc(Hons) Nursing (Adult) graduates are in full-time employment or further education within six months.  
Source: DHLE (Destination of leavers from Higher Education) survey, published 2018.



This degree changed my entire perspective on life. It helped me see the bigger picture and the world as we know it. I feel as though I used to look at the world through a keyhole and now I've opened the door."

Andreas  
BSc(Hons) Wildlife Ecology and Conservation Science



**100%**  
of UWE Bristol BSc(Hons) Criminology with Psychology graduates are in full-time employment or further education within six months.  
Source: DHLE (Destination of leavers from Higher Education) survey, published 2018.

**1<sup>ST</sup>**  
in the South West for satisfaction in Occupational Therapy in the Complete University Guide 2020.





# What if the city was your campus, playground, inspiration and contact book?

UWE Bristol Degree Show, 2019, Arnolfini, Bristol.

## Faculty of Arts, Creative Industries and Education

Sometimes rebellious, always unexpected, Bristol defies lazy clichéd classification. It point-blank refuses to be pigeon-holed. But one thing's constant: wherever you are in this city, you can feel its creative energy fizzing, sparking, and constantly re-igniting.

### Our City Campus: This is where it all happens.

City Campus is the creative heart of UWE Bristol, and it's at the centre of Bristol's creative community. It's the home of collaboration, diversity, curiosity and innovation. From here, you'll find yourself plugged into practitioners from every imaginable creative discipline and industry. You'll learn from them and work alongside them, through teaching, live projects, placements and research.

As an active member of Bristol's creative scene, you'll quickly build up an impressive network of connections and contacts. But we expect you to break a few things along the way – like boundaries, conventions, even the occasional rule book. Through our research and work with organisations like Watershed, where you'll find our Digital Cultures Research Centre, our students and staff are constantly shaping and reshaping the city's cultural and creative life.



My course gave me the perfect start to a career in the television industry. I had freedom to try my hand at many mediums, build broad skills and ultimately specialise in my found passion and speciality, documentary. My final year film even won a Royal Television Society (RTS) award for 'best factual film'. Since graduating in 2014, I've worked across many departments at the BBC; had a project twice BAFTA-nominated; created a series in the Americas for both UK and US broadcasters, and won a personal RTS award for best newcomer talent in the South West."

Hugo  
BA(Hons) Filmmaking  
and Creative Media graduate



# Let's smash boundaries together.

Unorthodox, daringly original, with the creative freedom you need, our creative and cultural courses don't just make the most of Bristol's booming creative reputation. They shape it.

➔ Find more information about our courses at [uwe.ac.uk/courses](https://uwe.ac.uk/courses)

11<sup>TH</sup>

in the UK for Education.

Source: Guardian League Tables 2020.





100%

of UWE Bristol BA(Hons) Creative and Professional writing students were satisfied with the quality of their course overall.

Source: The National Student Survey 2019.



I use so many of the skills I learnt at UWE Bristol. From studying a degree that is so much about your ability to write, research and digest complex information to developing event management skills through the English society. When the time came to apply for jobs, I felt like my CV really stood out."

Joe  
BA(Hons) English Literature graduate



3<sup>RD</sup>

in the UK for Film Production and Photography.

Source: Guardian League Tables 2020.



I love the pace of my job and being able to represent ethnic minorities on TV is really important to me. I rarely see diversity represented on screen but I want young people to know that this career is achievable, you just need the confidence to put yourself out there."

Sangita  
BA(Hons) English Language and Linguistics graduate





Make

it

happen



# Ready to change the world?

Let's make it happen. Over the following pages we've included everything you need to know – from how to apply for your chosen course to fees and funding.

## 1. How to apply

### Check the entry requirements

Once you've decided which course you'd like to study at [uwe.ac.uk/courses](https://uwe.ac.uk/courses), you'll need to check you meet, or are working towards, the entry requirements. You should also be aware of our general information on entry requirements. You can find this at [uwe.ac.uk/ugentry](https://uwe.ac.uk/ugentry).

### Applications for full-time study

All degrees at UWE Bristol, including foundation degrees and degrees with foundation years, should be applied for through UCAS. If you're applying for the second or third year of a course, this is still the case. You'll be guided through the straightforward online application process at [ucas.com](https://ucas.com).

To make sure you get the degree you want, apply before the 15 January UCAS deadline. Some of our courses are highly competitive, so we're unlikely to consider late applications. However, if a course does have vacancies, we're happy to consider applications submitted after the January deadline. Courses without vacancies will

be highlighted on our website. Key dates, including UCAS deadlines, can be found at [uwe.ac.uk/timeline](https://uwe.ac.uk/timeline).

### Applications for part-time study

If you want to study one of our part-time undergraduate courses, you'll need to apply directly to us or one of our local study partners. To find out more, visit our course pages at [uwe.ac.uk/courses](https://uwe.ac.uk/courses).

### International student applications

As well as applying through UCAS, you can also apply through one of our overseas representatives. Visit [uwe.ac.uk/mycountry](https://uwe.ac.uk/mycountry) to find the contact details of a representative in your country – this service is free.

### Deferred entry

If you'd like to take a gap year, we're usually happy to accept applications for deferred entry. However, there are some courses where this isn't possible. This is made clear online on the relevant course pages at [uwe.ac.uk/courses](https://uwe.ac.uk/courses). If you decide to defer after you've applied, you'll need to contact our Admissions Team for advice.

### Courses subject to approval

If the degree you're interested in is marked '*Subject to final UWE Bristol approval*', you should still apply in the normal way. To stay up-to-date with progress, check [uwe.ac.uk/courses](https://uwe.ac.uk/courses). If you hold an offer on one of these courses, you will be notified of changes through the UWE Welcome website – an online portal where you can track the progress of your application.

### Advanced entry

If you already have a qualification in, or can demonstrate you've studied relevant subjects at a level equivalent to Higher Education, you may be considered for exemption from part of the course. Once you've applied, simply upload full details of your qualification via the UWE Welcome website for us to review.

## Equality of opportunity

We welcome students from many academic and social backgrounds. We'll consider your application on the basis of your suitability for the course you've applied for, while acknowledging the statutory requirements of the University and relevant professional organisations. We're committed to enabling equality of opportunity in access to study courses, assessment and in developing and delivering the curriculum. We aim to provide a working and learning environment free from any kind of discrimination or harassment. We encourage staff and students at all levels in the organisation to commit to these values.

### Students with disabilities

If you have a disability, medical condition, mental health difficulty or any other specific need, there is no reason why your university experience should be any different from anyone else's. We'll welcome your application to study with us.

So that we can start giving you the right support, please share any relevant conditions or disabilities on your application form. We're here to help, offer advice and discuss support, equipment and funding – and you can chat to us at any point in the process.

### Criminal convictions

If you're applying for a course which is subject to a Disclosure and Barring Service (DBS) check, you'll need to declare any criminal conviction on your application form. We may ask you to provide further details. We will not be able to continue considering your application until this information has been provided. Further information on the admission of applicants with criminal convictions is available from our Admissions Team.

## 2. Considering your application

As soon as we receive your application, we'll email you login details for your personal UWE Welcome website – here you'll be able to track the progress of your application. We'll send updates to you via this site. If you've applied for more than one course with us, you'll be able to see updates for them all. We encourage you to check this site regularly and set [admissions@uwe.ac.uk](mailto:admissions@uwe.ac.uk) as a 'trusted' email, to make sure you don't miss a thing.

We aim to notify you within 14 days from the date you submit your application.

## 3. What happens next?

If your course has an Offer Holder Day, you'll receive an invitation through your UWE Welcome website shortly after receiving your offer. Building on the Open Day experience, these events give you the chance to explore your chosen course in much more depth.

If you decide to firmly accept our offer, you'll be sent details to apply for our accommodation. If you choose UWE Bristol as your UCAS insurance choice, although accommodation is not guaranteed, you can make an application for accommodation from A level results day onwards. For full details on the options available to you, visit [uwe.ac.uk/accommodation](https://uwe.ac.uk/accommodation).

Your course may require occupational health clearance and a Disclosure and Barring Service (DBS) check to be provided. If so, details of how to complete these will be sent to you, usually from early May onwards.

## The right to cancel

If you accept an offer to study with us, you have the right to cancel your place within 14 days of acceptance of that offer. To exercise the right to cancel, use the form that can be found at [uwe.ac.uk/offers](https://uwe.ac.uk/offers), under the section 'Offers and confirmation'. Or send a clear statement of your decision to withdraw to our Admissions Team by email or letter within your 14 day cancellation period.

## Keeping you updated

We'll be sending you lots of useful information from the date you apply to the day you join. This may include reminders on when to apply for student finance as well as detailed joining instructions in the summer.

## Getting your results

If, when you get them, your exam results don't match the conditions of your offer with us, check your status on UCAS or your UWE Welcome website as we may have already confirmed your place. Or contact us immediately to discuss the options available to you.

## Get in touch

If you have any questions that we haven't answered above, please get in touch as we're happy to help. Simply email [admissions@uwe.ac.uk](mailto:admissions@uwe.ac.uk) or call us on +44 (0)117 32 83333.

# Apply now.



# Your application timeline.

## Spring

Meet us at UCAS fairs and school visits.

## June

Experience one of our Open Days (between June and November).

## September

Start your UCAS application and write your personal statement.

Start researching your accommodation options.

## November

Attend a selection event for your course, if relevant (between November and May 2021).

## 15 January

UCAS deadline. Once you have made your application, our admissions team will be in touch with further information about applying for accommodation.

## February

Come and see us at an Offer Holder Day (if applicable) (February/March).

Start applying for student funding.

## April

Make your first (firm) and second (insurance) choice through UCAS.

## August

Results date and confirmation of your place with us.

## September

Welcome week, induction and Freshers' Fair.



Come and meet us at [uwe.ac.uk/opensdays](https://uwe.ac.uk/opensdays).

# Entry requirements.

## UCAS tariff points

We make our offers using UCAS tariff points in conjunction with our minimum entry requirements. We accept points from all qualifications in the UCAS tariff. This means you can include points from a variety of qualifications, including (but not limited to): A and AS Levels (including General Studies and Critical Thinking); BTEC; Music and Drama; Welsh Baccalaureate; International Baccalaureate. To calculate your UCAS Tariff points, visit [ucas.com/ucas/tariff-calculator](https://ucas.com/ucas/tariff-calculator).

## What are our minimum entry requirements?

For an honours degree course without an integrated foundation year, you normally need two A Levels, or the equivalent, such as a BTEC Diploma or Extended Diploma, International Baccalaureate, or Access to Higher Education Diploma. For an honours degree course with an integrated foundation year, you would normally need one A level or equivalent. For more details on our entry requirements, visit [uwe.ac.uk/ugentry](https://uwe.ac.uk/ugentry).

Students who achieve the UCAS tariff points required (and have passed an English Language qualification) have almost always gained qualifications that meet our minimum entry requirements. However, if you've taken a number of other qualifications, (such as AS Levels or Music and Drama qualifications), get in touch with us for advice.

## Required subjects

For some courses, we specify subjects and grades you must achieve to be accepted. This is usually because you need to have reached a certain standard in a subject to succeed on the degree course. Subjects may be required at GCSE, or at A Level, Extended Diploma, IB, or equivalent. Some courses may offer a foundation year as an alternative entry point. It's really important you check you will have the required subjects for your course and contact us (or enquire at an Open Day) if you're unsure.

## English and Maths

We require an English qualification for all courses. We accept GCSE English Language and Literature grade C/grade 4, or IELTS 6.0 (International English Language Test) with no less than 5.5 in any one element in most cases. Some courses such as Health and Social Care courses may require a higher IELTS. See course information for further details at [uwe.ac.uk/courses](https://uwe.ac.uk/courses).

GCSE Maths and/or Science grade C/grade 4 is required for many of our courses.

Please note: the following qualifications are not accepted by UWE Bristol as alternatives to GCSE Maths and English at grade C or above: Level 2 Key Skills in Communication and Application of Number; Level 2 Certificates in Adult Numeracy and Literacy; and Level 2 Functional Skills in Maths and English.

## Access courses

An Access to Higher Education Diploma is often the best route if you don't have the academic qualifications normally required, but your life and work experience has given you a strong motivation to go to university. We'll consider applications for all our courses from those who are taking or have passed a QAA-recognised Access to Higher Education Diploma. For courses which have 'required subjects' you normally have to include these subjects within your Access course. These requirements are detailed on our course pages at [uwe.ac.uk/courses](https://uwe.ac.uk/courses).

## Integrated foundation year options

We offer a number of courses which include a foundation level entry year – perfect if you need an additional year to gain the required knowledge before starting your chosen degree. The best way to explore these is to come to an Open Day, or you can contact us for advice.

You'll find the entry requirements for each course on our website. We've made them as straightforward as possible – and we explain below the different ways you can gain a place on the course of your choice.

## Heading Higher Passport (HHP) Plus

HHP Plus is a participation scheme bringing together enrichment programmes taught in local schools and colleges in partnership with UWE Bristol. We provide a range of experiences and activities, which have the potential to raise aspirations and increase awareness of the opportunities available in Higher Education. The aim is to support learners in decisions about their future. To find out more, visit [uwe.ac.uk/schoolsandcolleges](https://uwe.ac.uk/schoolsandcolleges).

## Interviews, auditions and portfolio reviews

For some courses, we may ask you to attend a selection event such as an interview, audition or portfolio review as part of the admissions process. The individual course listings will tell you if this applies to you or not – but typically:

- Creative industries – you'll need to bring examples of your creative work (portfolio).
- Drama and acting – you'll need to come for an audition and discussion.
- Initial teacher training and health and social care – you'll need to attend a selection event which may involve undertaking a test and having an interview.

## Initial Teacher Education (ITE) courses

In addition to meeting the entry requirements stated for the course you must:

- Satisfy the Department for Education about your suitability for the teaching profession and your ability to undertake a training course. For further information, please see the webpage for the course you're interested in.
- Provide a satisfactory Declaration of Health and a further declaration on criminal convictions (Disclosure and Barring Service clearance) before taking up the place.

Find out more by visiting [getintoteaching.education.gov.uk/eligibility-for-teacher-training](https://getintoteaching.education.gov.uk/eligibility-for-teacher-training).

## Health and social care courses

In addition to meeting the academic entry requirements stated for the course you must:

- Demonstrate your suitability and ability to study the course. For further information, please see the webpage for the course you're interested in.
- Provide a satisfactory Declaration of Health and a further declaration on criminal convictions (Disclosure and Barring Service clearance) before taking up the place.
- Some courses ask you to show competency in the use of the English language and maths.

## International qualifications

We accept a wide range of international qualifications from all over the world. You can find full details on our website at [uwe.ac.uk/mycountry](https://uwe.ac.uk/mycountry).

## Experience – but not the usual entry requirements

We can sometimes accept you onto a course when you don't meet the usual entry requirements, but you have substantial experience (usually a period of years) in a field closely related to the course. We need to be sure you're adequately prepared for the academic methods of teaching and assessment you will encounter on your course. Sometimes we'll recommend you do an Access course or offer you a degree with an integrated foundation year instead.



# Fees, funding and costs.

## Now it's time to talk money.

We know that tuition fees and the cost of living away from home is a really big investment. That's why it's important that you know all the facts. Read the following information carefully.

### 1. Tuition fees and additional costs

#### How much are tuition fees?

At the time of print, tuition fees for 2021/22 haven't been set. Our undergraduate study fees in 2020/21 are £9,250 a year for UK and EU students and between £13,250 and £15,750 for international students. Fee information for UK and EU students studying a Foundation Degree at one of our local study partners can be found on our course pages, visit [uwe.ac.uk/courses](https://uwe.ac.uk/courses).

#### Part-time study

Tuition fees for part-time study are charged a pro-rata amount of the full-time equivalent. International students are not usually able to study part time due to the immigration restrictions of the Tier 4 student visa.

#### Indicative additional costs

Any additional costs given per course are what you could expect to incur during your studies – and are for items not covered by the standard tuition fee. These could be for materials, textbooks, travel, clothing, software or printing.

#### Living costs

If you're living away from home while you study, there are plenty of extra costs you need to cover – including accommodation, travel, bills and food. We've estimated that you'll need to set aside between £9,580 and £12,100 per year as a single student. This doesn't include tuition fees or unexpected costs.

### 2. What financial help is available?

#### What support is there for me?

If you're a UK student, you can normally expect to fund your course using loans and grants provided by the respective funding body in England, Northern Ireland, Scotland or Wales, subject to meeting eligibility requirements. If you're an EU student you can also apply for funding. All applications are assessed according to funding eligibility rules.

#### Financial help from UWE Bristol

We aim to make sure that everyone with potential has the opportunity to study with us, regardless of social or financial background. We provide over £4.5 million to students each year through our Student Support Fund, bursaries, scholarships and grants. Visit [uwe.ac.uk/money](https://uwe.ac.uk/money) to find out more.

#### Student Support Fund (non-repayable)

We'll prioritise you if you're a UK student who's unable to work part time because of caring responsibilities or due to an illness. All applications are individually assessed and not all students receive an award. Find out more at [uwe.ac.uk/funds](https://uwe.ac.uk/funds).

We know that financing your studies can be daunting. That's why we're here to help and advise you, whether you're a UK, EU, international, full-time or part-time student.

### Financial education

Learning how to manage your money is a big part of university life. We offer a wide range of support to help you get on top of your finances and develop essential money skills for the future. Find out more at [uwe.ac.uk/managingyourmoney](https://uwe.ac.uk/managingyourmoney).

### Financial help from the UK government (UK and EU students)

The Government offers tuition fee loans, maintenance loans and grants to UK and EU students to assist with the costs of study. The support available varies depending on which country you usually reside in and based on strict eligibility rules. Check out the relevant funding bodies websites at [gov.uk/student-finance](https://gov.uk/student-finance) for more information.

### Social work bursaries

If you're registered on a social work course and an English-resident, you may be eligible for a bursary in the second and third years of study, alongside the standard student funding from Student Finance England. This funding is provided by the NHS and has not yet been confirmed for 2021/22.

### Welfare benefits (non-repayable)

If you're a UK student studying part time, or a full-time student with a disability, or with dependants, you may be eligible to receive benefits while studying.

### Trusts and charities (non-repayable)

There are a large number of organisations who may be able to provide you with additional financial support, but demand for these funds can be very high. You can find out more at [thescholarshipshub.org.uk](https://thescholarshipshub.org.uk).

### 3. Repaying your tuition fee loan

Each funding body has a different repayment threshold. If you're funded by Student Finance England or Wales, you'll start to make loan repayments when you're earning at least (£26,525), per year (subject to change). At this point, 9% of your earnings above £26,525 per tax year will be deducted from your salary by your employer.

If you never earn above the threshold £26,525, you will never repay the loan. Thirty years after you finish studying any remaining debt is cancelled. Repayments are based on what you earn, not on what you owe. So, whether your course costs £7,500 per year or £9,250 per year, you'll repay the same each month. Student loans do not go on your credit file.



Courses

directly



Accounting and Finance

For more information visit [uwe.ac.uk/subjects/accounting](https://uwe.ac.uk/subjects/accounting)

Code	Course	UCAS Tariff	Campus	Accreditations
Degrees				
N40K	BSc(Hons) Accounting	112	Frenchay	ACCA, CIMA, ICAEW
N40P	BA(Hons) Accounting and Finance	112	Frenchay	ACCA, CIMA, ICAEW
N30H	BA(Hons) Accounting and Finance (Top up)		Frenchay	
N4NB	BA(Hons) Accounting and Management	112	Frenchay	ACCA
N300	BA(Hons) Banking and Finance	112	Frenchay	CIMA, CISI
N310	BA(Hons) Banking and Finance (Top up)		Frenchay	
Degrees with an Integrated Foundation Year				
N4KF	BSc(Hons) Accounting	48	Frenchay	ACCA, CIMA, ICAEW
N4PF	BA(Hons) Accounting and Finance	48	Frenchay	ACCA, CIMA, ICAEW
N4NF	BA(Hons) Accounting and Management	48	Frenchay	
N30F	BA(Hons) Banking and Finance	48	Frenchay	CISI

Architecture

For more information visit [uwe.ac.uk/subjects/architecture](https://uwe.ac.uk/subjects/architecture)

Code	Course	UCAS Tariff	Campus	Accreditations
Degrees				
K236	BSc(Hons) Architectural Technology and Design	112	Frenchay	CIAT, CIOB
K100	BSc(Hons) Architecture	144	Frenchay	ARB, LAM, RIBA
KH12	BEng(Hons) Architecture and Environmental Engineering	120	Frenchay	ARB, CIBSE, EC, RIBA, LAM
KK14	BA(Hons) Architecture and Planning	136	Frenchay	ARB, RIBA, RTPI
K120	BA(Hons) Interior Architecture	128	Frenchay	IE
Degrees with an Integrated Foundation Year				
K26F	BSc(Hons) Architectural Technology and Design	88	Frenchay	CIAT, CIOB
K10F	BSc(Hons) Architecture	88	Frenchay	ARB, RIBA
KH1F	BEng(Hons) Architecture and Environmental Engineering	88	Frenchay	ARB, CIBSE, EC, RIBA
KK1F	BA(Hons) Architecture and Planning	88	Frenchay	ARB, RIBA, RTPI
K12F	BA(Hons) Interior Architecture	88	Frenchay	IE

Art

For more information visit [uwe.ac.uk/subjects/art](https://uwe.ac.uk/subjects/art)

Code	Course	UCAS Tariff	Campus	Accreditations
Degrees				
W110	BA(Hons) Drawing and Print	112	City Campus	
W101	BA(Hons) Fine Art	112	City Campus	
W224	BA(Hons) Illustration	112	City Campus	
Degrees with an Integrated Foundation Year				
W11F	BA(Hons) Drawing and Print	48	City Campus	
W10F	BA(Hons) Fine Art	48	City Campus	
W20F	BA(Hons) Illustration	48	City Campus	

Audio and Music Technology

For more information visit [uwe.ac.uk/subjects/audio](https://uwe.ac.uk/subjects/audio)

Code	Course	UCAS Tariff	Campus	Accreditations
Degrees				
J932	BSc(Hons) Audio and Music Technology	112	Frenchay	JAMES
WJ39	BSc(Hons) Creative Music Technology	112	Frenchay	JAMES
Degrees with an Integrated Foundation Year				
J93F	BSc(Hons) Audio and Music Technology	72	Frenchay	JAMES

Biosciences

For more information visit [uwe.ac.uk/subjects/biosciences](https://uwe.ac.uk/subjects/biosciences)

Code	Course	UCAS Tariff	Campus	Accreditations
Degrees				
C110	BSc(Hons) Biological Sciences	112	Frenchay	
C11M	MSci Biological Sciences	112	Frenchay	
C980	BSc(Hons) Biomedical Science	120	Frenchay	IBMS
C98M	MSci Biomedical Science	120	Frenchay	IBMS
Degrees with an Integrated Foundation Year				
C11F	BSc(Hons) Biological Sciences	48	Frenchay	
C1MF	MSci Biological Sciences	48	Frenchay	
C98F	BSc(Hons) Biomedical Science	48	Frenchay	IBMS
C9MF	MSci Biomedical Science	48	Frenchay	IBMS
Foundation Degree				
BLS1	FdSc Biological Laboratory Sciences	64	University Centre Weston	

Business Management

For more information visit [uwe.ac.uk/subjects/business](https://uwe.ac.uk/subjects/business)

Code	Course	UCAS Tariff	Campus	Accreditations
Degrees				
N191	BA(Hons) Business (Team Entrepreneurship)	112	Frenchay	
NN21	BA(Hons) Business and Events Management	112	Frenchay	
NN2G	BA(Hons) Business and Events Management (Top up)		Frenchay	
N1N6	BA(Hons) Business and Human Resource Management	112	Frenchay	CMI, CIPD
N1NY	BA(Hons) Business and Human Resource Management (Top up)		Frenchay	
NM11	BA(Hons) Business and Law	112	Frenchay	
N100	BA(Hons) Business and Management	112	Frenchay	CMI
N12T	BA(Hons) Business and Management (Top up)		Frenchay	
NL14	BA(Hons) Business Management and Economics	112	Frenchay	
N1LH	BA(Hons) Business Management and Economics (Top up)		Frenchay	
N201	BA(Hons) Business Management and Leadership	112	Frenchay	CMI, ILM
N4NG	BA(Hons) Business Management with Accounting and Finance (Top up)		Frenchay	
N1N5	BA(Hons) Business Management with Marketing	112	Frenchay	
N1NW	BA(Hons) Business Management with Marketing (Top up)		Frenchay	
N110	BA(Hons) International Business	112	Frenchay	CMI, EPAS
N12U	BA(Hons) International Business Management (Top up)		Frenchay	
N1C6	BA(Hons) Sports Business and Entrepreneurship	112	Bristol City Football Club, Ashton Gate	
Degrees with an Integrated Foundation Year				
N19F	BA(Hons) Business (Team Entrepreneurship)	48	Frenchay	
NN2F	BA(Hons) Business and Events Management	48	Frenchay	
NNQF	BA(Hons) Business and Human Resource Management	48	Frenchay	CMI
NM1F	BA(Hons) Business and Law	48	Frenchay	
N10F	BA(Hons) Business and Management	48	Frenchay	CMI, ILM
NL1F	BA(Hons) Business Management and Economics	48	Frenchay	
N21F	BA(Hons) Business Management and Leadership	48	Frenchay	CMI, ILM
NN5F	BA(Hons) Business Management with Marketing	48	Frenchay	
N11F	BA(Hons) International Business	48	Frenchay	CMI, EPAS
Foundation Degree				
N1NG	FdA Business with Management	64	University Centre Weston	

Computer Science and Creative Technologies

For more information visit [uwe.ac.uk/subjects/computing](https://uwe.ac.uk/subjects/computing)

Code	Course	UCAS Tariff	Campus	Accreditations
Degrees				
	BSc(Hons) Applied Computing*		University Centre Weston	
N111	BSc(Hons) Business Computing	112	Frenchay	
G400	BSc(Hons) Computer Science	120	Frenchay	BSC
G401	BSc(Hons) Computing	120	Frenchay	
G4H4	BSc(Hons) Cyber Security and Digital Forensics	112	Frenchay	
G451	BSc(Hons) Digital Media	112	Frenchay	BCS
G611	BSc(Hons) Games Technology	120	Frenchay	TIGA
G560	BSc(Hons) Information Technology (Top up)		Frenchay	
GN52	BSc(Hons) Information Technology Management for Business	112	Frenchay	TP
6F3B	BSc(Hons) Software Engineering for Business	112	Frenchay	TP
Degrees with an Integrated Foundation Year				
N11F	BSc(Hons) Business Computing	72	Frenchay	
G40F	BSc(Hons) Computer Science	72	Frenchay	
I10F	BSc(Hons) Computing	72	Frenchay	
G4HF	BSc(Hons) Cyber Security and Digital Forensics	72	Frenchay	
G45F	BSc(Hons) Digital Media	72	Frenchay	BCS
G61F	BSc(Hons) Games Technology	72	Frenchay	TIGA

Construction, Property and Surveying

For more information visit [uwe.ac.uk/subjects/construction](https://uwe.ac.uk/subjects/construction)

Code	Course	UCAS Tariff	Campus	Accreditations
Degrees				
HK10	BEng(Hons) Building Services Engineering (Top up)		Frenchay	CIBSE, EC
K230	BSc(Hons) Building Surveying	112	Frenchay	CABE, CIOB, RICS
K252	BSc(Hons) Construction Project Management	104	Frenchay	CIOB
K430	BA(Hons) Property Development and Planning	112	Frenchay	RICS
KN21	BSc(Hons) Quantity Surveying and Commercial Management	112	Frenchay	BQSM, CIOB, ICES, RICS
K440	BSc(Hons) Real Estate	120	Frenchay	RICS
Degrees with an Integrated Foundation Year				
K23F	BSc(Hons) Building Surveying	72	Frenchay	CABE, CIOB, RICS
K25F	BSc(Hons) Construction Project Management	72	Frenchay	
K43F	BA(Hons) Property Development and Planning	72	Frenchay	RICS
KN2F	BSc(Hons) Quantity Surveying and Commercial Management	72	Frenchay	CIOB, ICES, RICS
K44F	BSc(Hons) Real Estate	72	Frenchay	RICS

\*Subject to final UWE Bristol approval.



Design

For more information visit [uwe.ac.uk/subjects/design](https://uwe.ac.uk/subjects/design)

Code	Course	UCAS Tariff	Campus	Accreditations
Degrees				
W211	BA(Hons) Graphic Design	112	City Campus	
2C3W	BA(Hons) Interior Design	112	City Campus	
W241	BA(Hons) Product Design	112	Frenchay	IED
W240	BSc(Hons) Product Design Technology	112	Frenchay	IED
Degrees with an Integrated Foundation Year				
W22F	BA(Hons) Graphic Design	48	City Campus	
2C3F	BA(Hons) Interior Design	48	City Campus	
W41F	BA(Hons) Product Design	88	Frenchay	IED
W42F	BSc(Hons) Product Design Technology	88	Frenchay	IED

Drama and Acting

For more information visit [uwe.ac.uk/subjects/drama](https://uwe.ac.uk/subjects/drama)

Code	Course	UCAS Tariff	Campus	Accreditations
Degrees				
W400	BA(Hons) Drama	112	City Campus	
W490	BA(Hons) Drama and Acting	112	City Campus	

Economics

For more information visit [uwe.ac.uk/subjects/economics](https://uwe.ac.uk/subjects/economics)

Code	Course	UCAS Tariff	Campus	Accreditations
Degrees				
N300	BA(Hons) Banking and Finance	112	Frenchay	CIMA, CISI
N310	BA(Hons) Banking and Finance (Top up)		Frenchay	
NL14	BA(Hons) Business Management and Economics	112	Frenchay	
N1LH	BA(Hons) Business Management and Economics (Top up)		Frenchay	
L100	BA(Hons) Economics	112	Frenchay	CIMA
L19G	BA(Hons) Economics (Top up)		Frenchay	
L190	BSc(Hons) Economics	112	Frenchay	CIMA
Degrees with an Integrated Foundation Year				
N30F	BA(Hons) Banking and Finance	48	Frenchay	CIMA, CISI
NL1F	BA(Hons) Business Management and Economics	48	Frenchay	
L10F	BA(Hons) Economics	48	Frenchay	CIMA
L19F	BSc(Hons) Economics	48	Frenchay	CIMA

Education and Teaching

For more information visit [uwe.ac.uk/subjects/education](https://uwe.ac.uk/subjects/education)

Code	Course	UCAS Tariff	Campus	Accreditations
Degrees				
X312	BA(Hons) Early Childhood	104	Frenchay	
X304	BA(Hons) Education	104	Frenchay	
X303	BA(Hons) Education in Professional Practice (Top up)		Frenchay	
G1X9	BSc(Hons) Mathematics with Qualified Teacher Status	120	Frenchay	
X123	BA(Hons) Primary Education (Initial Teacher Education)	112	Frenchay	
Degrees with an Integrated Foundation Year				
X31F	BA(Hons) Early Childhood	64	Frenchay	
X34F	BA(Hons) Education	64	Frenchay	
G1XF	BSc(Hons) Mathematics with Qualified Teacher Status	80	Frenchay	
Foundation Degrees				
X990	FdA Educational Support	56	City of Bristol College	
X161	FdA Inclusive Practice	48	University Centre Weston	

Engineering

For more information visit [uwe.ac.uk/subjects/engineering](https://uwe.ac.uk/subjects/engineering)

Code	Course	UCAS Tariff	Campus	Accreditations
Degrees				
H403	BEng(Hons) Aerospace Engineering	112	Frenchay	
H404	MEng Aerospace Engineering	120	Frenchay	
H405	BEng(Hons) Aerospace Engineering with Pilot Studies	112	Frenchay	
H406	MEng Aerospace Engineering with Pilot Studies	120	Frenchay	
KH12	BEng(Hons) Architecture and Environmental Engineering	120	Frenchay	ARB, CIBSE, EC, LAM, RIBA
H331	BEng(Hons) Automotive Engineering	120	Frenchay	EC, IMechE
H335	MEng Automotive Engineering	112	Frenchay	EC, IMechE
H290	BEng(Hons) Civil Engineering	112	Frenchay	CIHT, ICE, IHE, IStructE
H29C	MEng Civil Engineering	120	Frenchay	
HM3L	BEng(Hons) Electronic and Computer Engineering	120	Gloucestershire College	EC, IET
H61D	BEng(Hons) Electronic Engineering	112	Frenchay	EC, IET
H61C	MEng Electronic Engineering	120	Frenchay	EC, IET
H110	BSc(Hons) Engineering (Top up)		Frenchay	
H300	BEng(Hons) Mechanical Engineering	112	Frenchay	EC, IMechE
H301	MEng Mechanical Engineering	120	Frenchay	EC, IMechE
H671	BEng(Hons) Robotics	112	Frenchay	EC, IET

Engineering (continued)

Code	Course	UCAS Tariff	Campus	Accreditations
Degrees with an Integrated Foundation Year				
H43F	BEng(Hons) Aerospace Engineering	80	Frenchay	
H45F	BEng(Hons) Aerospace Engineering with Pilot Studies	80	Frenchay	
KH1F	BEng(Hons) Architecture and Environmental Engineering	88	Frenchay	ARB, CIBSE, EC, RIBA
H31F	BEng(Hons) Automotive Engineering	80	Frenchay	EC, IMechE
H29F	BEng(Hons) Civil Engineering	80	Frenchay	CIHT, ICE, IHE, IStructE
H6DF	BEng(Hons) Electronic Engineering	80	Frenchay	IET
H3FF	BEng(Hons) Mechanical Engineering	80	Frenchay	EC, IMechE
H67F	BEng(Hons) Robotics	80	Frenchay	EC, IET
Foundation Degrees				
C2M4	FdSc Electronic and Computer Engineering	120	Gloucestershire College	
093S	FdSc Mechanical Engineering	120	Bridgwater and Taunton College	
834A	FdSc Mechatronics	120	Bridgwater and Taunton College	

English, History and Writing

For more information visit [uwe.ac.uk/subjects/english](https://uwe.ac.uk/subjects/english)

Code	Course	UCAS Tariff	Campus	Accreditations
Degrees				
W810	BA(Hons) Creative and Professional Writing	112	Frenchay	ILM
QV31	BA(Hons) English and History	112	Frenchay	ILM
QQ3C	BA(Hons) English Language and Linguistics	112	Frenchay	ILM
Q390	BA(Hons) English Language and Literature	112	Frenchay	ILM
Q300	BA(Hons) English Literature	112	Frenchay	ILM
OPC3	BA(Hons) English Literature with Writing	112	Frenchay	ILM
V100	BA(Hons) History	112	Frenchay	ILM
Degrees with an Integrated Foundation Year				
W81F	BA(Hons) Creative and Professional Writing	64	Frenchay	ILM
QV3F	BA(Hons) English and History	64	Frenchay	ILM
QQ3F	BA(Hons) English Language and Linguistics	64	Frenchay	ILM
Q39F	BA(Hons) English Language and Literature	64	Frenchay	ILM
Q30F	BA(Hons) English Literature	64	Frenchay	ILM
Q3WF	BA(Hons) English Literature with Writing	64	Frenchay	ILM
V10F	BA(Hons) History	64	Frenchay	ILM

Environmental Science

For more information visit [uwe.ac.uk/subjects/environment](https://uwe.ac.uk/subjects/environment)

Code	Course	UCAS Tariff	Campus	Accreditations
Degrees				
C110	BSc(Hons) Biological Sciences	112	Frenchay	
C11M	MSci Biological Sciences	112	Frenchay	
F900	BSc(Hons) Environmental Science	112	Frenchay	IES
F90M	MSci Environmental Science	112	Frenchay	
B917	BSc(Hons) Public and Environmental Health (Top up)		University Centre Weston	CIEH
45MN	BSc(Hons) Wildlife Ecology and Conservation Science	112	Frenchay	IES
45MM	MSci Wildlife Ecology and Conservation Science	112	Frenchay	IES
Degrees with an Integrated Foundation Year				
C11F	BSc(Hons) Biological Sciences	48	Frenchay	
C1MF	MSci Biological Sciences	48	Frenchay	
F90F	BSc(Hons) Environmental Science	48	Frenchay	IES
F9MF	MSci Environmental Science	48	Frenchay	
45FF	BSc(Hons) Wildlife Ecology and Conservation Science	48	Frenchay	IES
45MF	MSci Wildlife Ecology and Conservation Science	48	Frenchay, Bristol Zoo	IES
Foundation Degree				
F750	FdSc Integrated Wildlife Conservation	64	Bristol Zoo	

Fashion

For more information visit [uwe.ac.uk/subjects/fashion](https://uwe.ac.uk/subjects/fashion)

Code	Course	UCAS Tariff	Campus	Accreditations
Degrees				
W2P2	BA(Hons) Fashion Communication	112	City Campus	
W23A	BA(Hons) Fashion Textiles	112	City Campus	SS
Degrees with an Integrated Foundation Year				
W2PF	BA(Hons) Fashion Communication	48	City Campus	
W23F	BA(Hons) Fashion Textiles	48	City Campus	



Filmmaking, Animation and Photography

For more information visit [uwe.ac.uk/subjects/filmmaking](https://uwe.ac.uk/subjects/filmmaking)

Code	Course	UCAS Tariff	Campus	Accreditations
Degrees				
W615	BA(Hons) Animation	112	City Campus	
W293	BA(Hons) Filmmaking	128	City Campus	SS
P30A	BA(Hons) Film Studies	112	Frenchay	
W640	BA(Hons) Photography	112	City Campus	AOP
Degrees with an Integrated Foundation Year				
W61F	BA(Hons) Animation	48	City Campus	
P3AF	BA(Hons) Film Studies	64	Frenchay	
W64F	BA(Hons) Photography	48	City Campus	AOP
Foundation Degree				
I620	FdSc Games and Animation Production	80	University Centre Weston	

Forensic Science

For more information visit [uwe.ac.uk/subjects/forensic](https://uwe.ac.uk/subjects/forensic)

Code	Course	UCAS Tariff	Campus	Accreditations
Degrees				
F410	BSc(Hons) Forensic Science	120	Frenchay	CSFS
F41M	MSci Forensic Science	120	Frenchay	
Degrees with an Integrated Foundation Year				
F41F	BSc(Hons) Forensic Science	48	Frenchay	
F4MF	MSci Forensic Science	48	Frenchay	

Geography and Environmental Management

For more information visit [uwe.ac.uk/subjects/geography](https://uwe.ac.uk/subjects/geography)

Code	Course	UCAS Tariff	Campus	Accreditations
Degrees				
FJ7C	BA(Hons) Enviromental Management	104	Frenchay	
L700	BA(Hons) Geography	112	Frenchay	RGS
FF89	BSc(Hons) Geography	112	Frenchay	IES, RGS
F600	BSc(Hons) Geology	112	Frenchay	GSL, IES
L90H	BA(Hons) Uniformed and Public Services	64	University Centre Weston	
Degrees with an Integrated Foundation Year				
FJ1F	BSc(Hons) Environmental Management	48	Frenchay	
L70F	BA(Hons) Geography	48	Frenchay	RGS
FF8F	BSc(Hons) Geography	48	Frenchay	IES, RGS

Health Professions

For more information visit [uwe.ac.uk/subjects/health](https://uwe.ac.uk/subjects/health)

Code	Course	UCAS Tariff	Campus	Accreditations
Degrees				
B821	BSc(Hons) Diagnostic Radiography	120	Glenside	HCPC
B510	BSc(Hons) Optometry	136	Glenside	GOC
B950	BSc(Hons) Paramedic Science	128	Glenside	CoP, HCPC
B822	BSc(Hons) Radiotherapy and Oncology	120	Glenside	HCPC
Foundation Programme				
B900	Foundation Programme Health Professions		Glenside, City of Bristol College	

Journalism and Media

For more information visit [uwe.ac.uk/subjects/media](https://uwe.ac.uk/subjects/media)

Code	Course	UCAS Tariff	Campus	Accreditations
Degrees				
P500	BA(Hons) Broadcast Journalism	120	City Campus	BJTC
P30H	BA(Hons) Media Communications*	112	Frenchay	
P31G	BA(Hons) Media Production*	112	City Campus	
Degrees with an Integrated Foundation Year				
P3HF	BA(Hons) Media Communications*	64	Frenchay	
P3GF	BA(Hons) Media Production*	64	City Campus, Frenchay	

Law

For more information visit [uwe.ac.uk/subjects/law](https://uwe.ac.uk/subjects/law)

Code	Course	UCAS Tariff	Campus	Accreditations
Degrees				
NM11	BA(Hons) Business and Law	112	Frenchay	
MM19	BA(Hons) Criminology and Law	112	Frenchay	
M100	LLB(Hons) Law	112	Frenchay	
NM1B	LLB(Hons) Law with Business	112	Frenchay	
Degrees with an Integrated Foundation Year				
NM1F	BA(Hons) Business and Law	48	Frenchay	
MM9F	BA(Hons) Criminology and Law	48	Frenchay	
M10F	LLB(Hons) Law	48	Frenchay	
NMBF	LLB(Hons) Law with Business	48	Frenchay	

\*Subject to final UWE Bristol approval.

Marketing

For more information visit [uwe.ac.uk/subjects/marketing](https://uwe.ac.uk/subjects/marketing)

Code	Course	UCAS Tariff	Campus	Accreditations
Degrees				
NN21	BA(Hons) Business and Events Management	112	Frenchay	
NN2G	BA(Hons) Business and Events Management (Top up)		Frenchay	
N1N5	BA(Hons) Business Management with Marketing	112	Frenchay	
N1NW	BA(Hons) Business Management with Marketing (Top up)		Frenchay	
N500	BA(Hons) Marketing	112	Frenchay	CIM
N50J	BA(Hons) Marketing (Top up)		Frenchay	
Degrees with an Integrated Foundation Year				
NN5F	BA(Hons) Business Management with Marketing	48	Frenchay	
N50F	BA(Hons) Marketing	48	Frenchay	CIM

Mathematics

For more information visit [uwe.ac.uk/subjects/maths](https://uwe.ac.uk/subjects/maths)

Code	Course	UCAS Tariff	Campus	Accreditations
Degrees				
G101	BSc(Hons) Mathematics	120	Frenchay	IMA
G1X9	BSc(Hons) Mathematics with Qualified Teacher Status	120	Frenchay	
Degrees with an Integrated Foundation Year				
G10F	BSc(Hons) Mathematics	80	Frenchay	IMA
G1XF	BSc(Hons) Mathematics with Qualified Teacher Status	80	Frenchay	

Nursing and Midwifery

For more information visit [uwe.ac.uk/subjects/nursing](https://uwe.ac.uk/subjects/nursing)

Code	Course	UCAS Tariff	Campus	Accreditations
Degrees				
	BSc(Hons) Midwifery	128	Glenside	
B721	BSc(Hons) Nursing (Adult)	120	Glenside	NMC
B722	BSc(Hons) Nursing (Children and Young People)	120	Glenside	NMC
B723	BSc(Hons) Nursing (Learning Disabilities)	120	Glenside	NMC
B724	BSc(Hons) Nursing (Mental Health)	120	Glenside	NMC
Foundation Degrees				
L510	FdSc Health and Social Care Practice	48	University Centre Weston or City of Bristol College	
L541	FdSc Integrated Mental Health and Social Care		University Centre Weston	
Foundation Programme				
B900	Foundation Programme Health Professions		Glenside, City of Bristol College	

Philosophy and Politics

For more information visit [uwe.ac.uk/subjects/philosophy](https://uwe.ac.uk/subjects/philosophy)

Code	Course	UCAS Tariff	Campus	Accreditations
Degrees				
V500	BA(Hons) Philosophy	112	Frenchay	
L290	BA(Hons) Politics and International Relations	112	Frenchay	
Degrees with an Integrated Foundation Year				
V50F	BA(Hons) Philosophy	48	Frenchay	
L29F	BA(Hons) Politics and International Relations	48	Frenchay	

Physiotherapy, Occupational Therapy  
and Sport Rehabilitation

For more information visit [uwe.ac.uk/subjects/physio](https://uwe.ac.uk/subjects/physio)

Code	Course	UCAS Tariff	Campus	Accreditations
Degrees				
B920	BSc(Hons) Occupational Therapy	128	Glenside	HCPC
B160	BSc(Hons) Physiotherapy	128	Glenside	HCPC
BC96	BSc(Hons) Sport Rehabilitation	120	Glenside, Frenchay	
Foundation Programme				
B900	Foundation Programme Health Professions		Glenside, City of Bristol College	

Planning

For more information visit [uwe.ac.uk/subjects/planning](https://uwe.ac.uk/subjects/planning)

Code	Course	UCAS Tariff	Campus	Accreditations
Degrees				
KK14	BA(Hons) Architecture and Planning	136	Frenchay	ARB, LAM, RIBA, RTPI
K430	BA(Hons) Property Development and Planning	112	Frenchay	RICS
K401	BSc(Hons) Urban Planning	104	Frenchay	RTPI
Degrees with an Integrated Foundation Year				
KK1F	BA(Hons) Architecture and Planning	88	Frenchay	ARB, RIBA, RTPI
K43F	BA(Hons) Property Development and Planning	72	Frenchay	RICS
K41F	BSc(Hons) Urban Planning	48	Frenchay	RTPI



Psychology, Sociology and Criminology

For more information visit [uwe.ac.uk/subjects/psychology](https://uwe.ac.uk/subjects/psychology)

Code	Course	UCAS Tariff	Campus	Accreditations
Degrees				
M900	BA(Hons) Criminology	120	Frenchay	
MM19	BA(Hons) Criminology and Law	112	Frenchay	
ML93	BA(Hons) Criminology and Sociology	120	Frenchay	
M9C8	BSc(Hons) Criminology with Psychology	120	Frenchay	
C800	BSc(Hons) Psychology	128	Frenchay	BPS
C8M9	BSc(Hons) Psychology with Criminology	128	Frenchay	BPS
L300	BA(Hons) Sociology	112	Frenchay	
L3C8	BSc(Hons) Sociology with Psychology	112	Frenchay	
Degrees with an Integrated Foundation Year				
M90F	BA(Hons) Criminology	48	Frenchay	
MM9F	BA(Hons) Criminology and Law	48	Frenchay	
ML3F	BA(Hons) Criminology and Sociology	48	Frenchay	
M98F	BSc(Hons) Criminology with Psychology	48	Frenchay	
C80F	BSc(Hons) Psychology	48	Frenchay	BPS
C89F	BSc(Hons) Psychology with Criminology	48	Frenchay	BPS
L30F	BA(Hons) Sociology	48	Frenchay	
L38F	BSc(Hons) Sociology with Psychology	48	Frenchay	
Foundation Degrees				
C8X9	FdA Therapeutic Work with Children and Young People	64	Mulberry Bush School	

Social Work, Environmental and Public Health

For more information visit [uwe.ac.uk/subjects/socialwork](https://uwe.ac.uk/subjects/socialwork)

Code	Course	UCAS Tariff	Campus	Accreditations
Degrees				
B917	BSc(Hons) Public and Environmental Health (Top up)		University Centre Weston	CIEH
L500	BSc(Hons) Social Work	120	Glenside	HCPC
Foundation Degrees				
C8X9	FdA Therapeutic Work with Children and Young People	64	Mulberry Bush School	

# The small print.

The information given in this printed prospectus, including that relating to the availability of courses, is current at the time of going to press (January 2020) and is subject to alterations. For up-to-date information, please check our website.

### Data protection

Personal data about students, including records of academic achievements, are stored by the University (the data controller) in accordance with the General Data Protection Regulation.

### Disclaimer

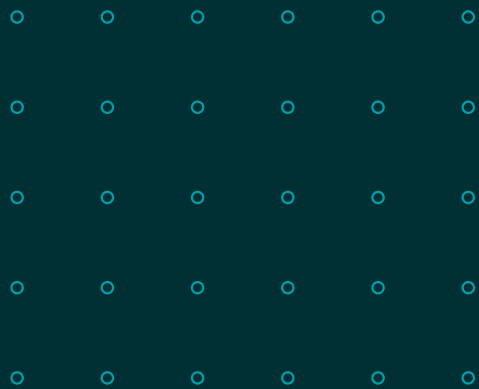
We've made every effort to make this prospectus as accurate as possible. However, it is printed over a year before the courses start. The information is therefore intended as an outline of what we intend to offer.

We continually enhance our offer by responding to feedback from our students and other stakeholders, which may mean we make changes to courses after the prospectus is published. This might include changes in legislation, practice or theory or updates we are required to make by professional or other regulatory bodies.

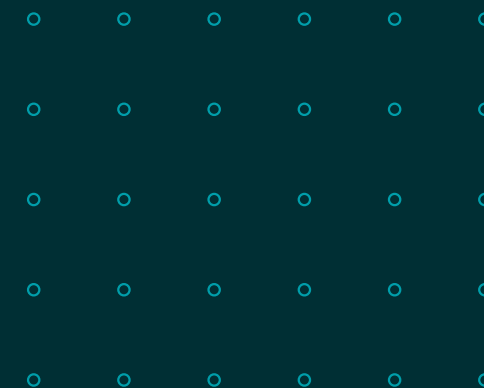
You'll find the most up-to-date information about our courses by visiting [uwe.ac.uk/courses](https://uwe.ac.uk/courses).

Very occasionally we may have to withdraw or combine courses due to limited demand, as small numbers would have a negative impact on the student experience for those courses. When this is the case, we'll advise you as soon as possible before the start of your course and use our reasonable endeavours to provide a suitable alternative.

Wherever possible, we use images of our campus and students in our literature and advertising. Occasionally we use stock images for illustrative purposes.



**Be brave.**





A prospectus without detailed course information?  
Yes. We're saving ink and paper. It's part of our  
commitment towards a better, more sustainable  
future. Visit [uwe.ac.uk](https://uwe.ac.uk) for all the course  
information you need.

**University of the West of England (UWE Bristol)**

Frenchay Campus

Coldharbour Lane

Bristol BS16 1QY

UK

[uwe.ac.uk](https://uwe.ac.uk)



UK Quality Assured