

Bowling Green State University

At a glance

Location Bowling Green, Ohio

Students 20,000

Campuses 1

Available places 2

Placement duration Full academic year

Specialisms Accounting, Economics,
Finance, International
Business, Marketing,
Management

Taught Language English

Accommodation University and Private

Term dates late August- early May

Website <http://www.bgsu.edu/>

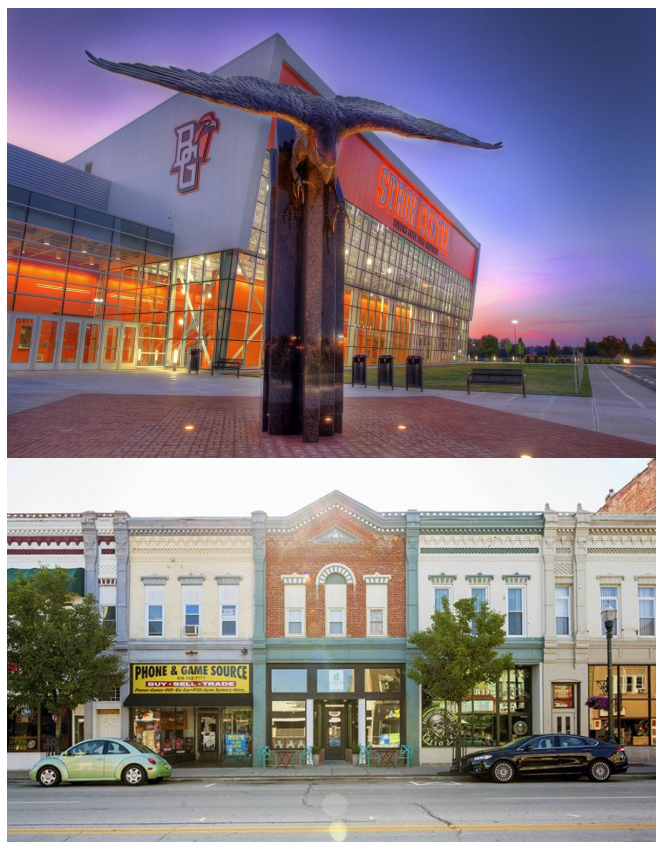
Description

BGSU is set in a 1,338 acre residential campus in Bowling Green, Ohio. It has recently been named as one of the top public universities nationwide by *US News and World Report*. Its [business courses](#) are among the top 2% of universities in the US accredited in Accounting and Business. It has a strong reputation for team sports and athletics and has 18 teams in national leagues.

Students from UWE's Business School will join students from UWE's BSc Geography programme who also have the opportunity to exchange to BGSU.

Surrounding Area

BGSU is situated in Ohio and is within driving distance of Toledo, Cleveland, Cincinnati, Columbus, Detroit and Chicago. From there, cheap flights are available to other locations in the US as well as Canada and Mexico.



Accommodation

Students have a variety of accommodation options to choose from with single occupancy, double occupancy, ensuite and shared units available. Students may also choose to live in private accommodation off campus.

How to apply

When successfully selected by UWE Bristol and nominated to BGSU you will be contacted by them and asked to fill out an online application, accompanied by the following documents:

- Academic transcript
- Passport copy
- Financial statement (required for visa application)

Further information

<http://www.bgsu.edu/international-programs-and-partnerships.html>