



# **Mokuhanga (Water-Based Woodblock) Printmaking**

## **Course Information**

**30th April - 2nd May 2024**

# Mokuhanga (Water-Based Woodblock) Printmaking

Led by: Lucy May Schofield

Course Duration: 3 Days, 10am to 4pm

Dates: 30th April - 2nd May 2024

Price: £359.00 full price / £280.00 concessionary price

The course price includes all materials and PPE.



## ABOUT THE COURSE

Mokuhanga is perfect for anyone interested in a non-toxic, table-top printmaking technique. Over the course of 3 days, you will learn the process of transferring a simple drawing to Japanese plywood and carve various colour separation wood blocks with a 'hangi-toh' knife, following in the tradition of Japanese Ukiyo-e and Sosaku hanga printmaking.

With no mechanical press required, only a hand held 'baren', you will learn the techniques to achieve various nuanced print effects, from 'woodgrain' to 'sesame printing' and the well known 'bokashi' (colour gradation), synonymous with mokuhanga. You will register your mulberry paper (kozo washi) with your multiple carved blocks through the simple but brilliant 'kento' registration system.

## WHO IS IT FOR?

Anyone interested in a non-toxic, water-based printmaking technique that doesn't require a mechanical press and can be practiced at home.

## COURSE STRUCTURE

### Day 1

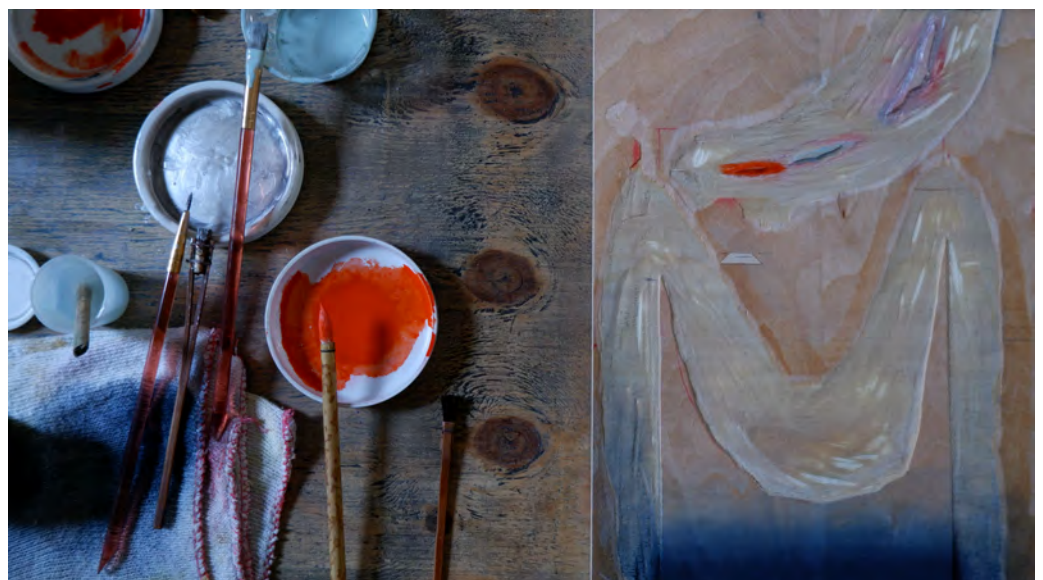
We will start with an introduction to the process and practice carving with the hangi-toh. We will then select our image and transfer it to the blocks.

### Day 2

We will spend most of the day learning and practicing the techniques of carving the colour separation blocks.

### Day 3.

We will print each block with watercolour and rice paste on washi, discuss our results and troubleshoot any issues.



## COURSE TUTOR

### About: Lucy May Schofield

Lucy is a graduate of London College of Printing. She was awarded a one-year residency with Visual Arts in Rural Communities in rural Northumberland, where she is still currently based. She has attended many residencies in Japan, Italy, Iceland and the US. Lucy was elected as an Associate member of the Royal Society of Painter-Printmakers.



Her work has been presented at The Kentler International Drawing Space, New York, 3331 Arts Chiyoda Tokyo and The Royal Academy Summer Exhibition London. Her work is held in public and private collections including Tate Britain, The Ashmolean Museum and Yale Centre for British Art.

In 2021 she was awarded a Queen Elizabeth Scholarship Trust grant to develop her practice and was the winner of the Flourish Award for excellence in printmaking in 2020. She is a member of the Mokuhanga Sisters collective, an international collaborative group formed of nine artists across four continents, exploring contemporary mokuhanga techniques and exhibiting together globally.

### WHAT DO I GET OUT OF IT?

You will be sure to take away a deeper understanding and appreciation of how these prints are created along with a love for both the process and results of this accessible, water-based printmaking method which provides endless possibilities, including those to be used in combination with other printmaking techniques.

### HOW IS THE COURSE DELIVERED?

This will be a physical course, delivered in person at our UWE Frenchay campus.

The course price includes all materials and PPE. Please sign up early to secure your place.

**BOOK HERE:** <https://store.uwe.ac.uk/short-courses/centre-for-print-research/cpd-courses>

