



BRISTOL

# the Bulletin

27 October 2006 - Issue 62



New Centre  
for Sport is  
launched

## In this month's issue

- 2 New Centre for Sport is launched
- 3 Installation by UWE graduate revealed at DKNY Bond Street store
- 3 Increased efficiency of Herceptin test to benefit women with breast cancer
- 4 'Round Table'
- 5 Hong Kong Professor is awarded Honorary Degree by UWE
- 6 UWE revamps student catering
- 6 UWE print experts show the way
- 7 'I'm giving up flying for good' says Transport student
- 7 Freedom of the city for Honorary Graduates of UWE
- 9 Is your BizIdea hot or not?

The Bulletin is published by the Marketing and Communications Office who reserve the right to select items for inclusion and to edit copy. For further information contact Jane Kelly or Mary Price on ext 82208, e-mail [Jane.Kelly@uwe.ac.uk](mailto:Jane.Kelly@uwe.ac.uk) and [Mary.Price@uwe.ac.uk](mailto:Mary.Price@uwe.ac.uk).

Editor: Jane Kelly

Editor: Mary Price

Production: Jayne Andrews

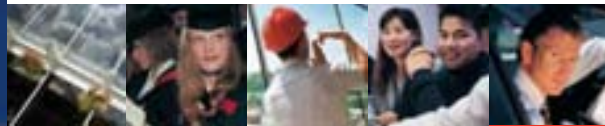
Designed by Graphic Design

Printing and Distribution by  
Printing and Stationery

The next issue will be circulated at the end of November. Copy date for this is Wednesday 1 November. Please do keep sending contributions in. The Bulletin regrets that it cannot be held responsible for any claims that arise out of advertisements carried.

### Front cover:

The Chancellor, The Rt Hon, The Baroness Elizabeth Butler-Sloss GBE, Jason Gardener MBE and the Vice Chancellor, Sir Howard Newby at the launch of the Centre for Sport



NEWS

## New Centre for Sport is launched

The Chancellor, The Rt Hon, The Baroness Elizabeth Butler-Sloss GBE, launched UWE's new Centre for Sport in a special ceremony on Monday 9 October.

The Centre for sport has Olympic standard facilities which it is hoped will help to nurture future sporting stars to reach their full potential. The ceremony also marked the opening of the University's new state-of-the-art £80 million student village, now home to around 2,000 students.

The Vice Chancellor, Sir Howard Newby, thanked all those who had contributed to the success of the project and his thoughts were echoed by Richard Price, Operations Director for Carillion, the main contractors.

Olympic sprinter, Jason Gardener MBE, who also spoke at the launch said he was very impressed with the facilities on offer at the new Centre for Sport, "I know from experience how much it means to have good facilities and the support to train to the highest level. These facilities will give a huge boost to sport at UWE, and will be a real attraction for athletes considering where to study. I am delighted to be present at the opening of UWE's Centre for Sport, and wish the Centre and the University all the very best in sporting success for the years ahead."

The University has already produced sporting stars such as rower Peter Reed, double world champion in the men's coxless four and a contender for the Olympics in Beijing in 2008. In addition the University has also nurtured high performing athletes through its Advanced Athletes Group such as Mark Adair (Fencing), Campbell Beaton (Skiing) and Louisa Brassey (Equestrian). With the new facilities in the Centre for Sport there are high hopes that the University can help other young athletes to reach their full potential and that some may go all the way to Olympic standard.

Stuart Vanstone, Head of Sport, at UWE says, "This Centre marks the start of a new era for sport at UWE. In particular we hope that top players of hall based sports such as badminton, netball and volleyball may now be attracted to study at the University. Our hall is of Olympic standard with a sprung wooden floor and an excellent viewing gallery which allows good match analysis. In addition athletes will have access to superior training facilities, Olympic lifting platforms and a physiotherapy clinic within the Centre."

For further information on the Centre for Sport see [www.uwe.ac.uk/sport](http://www.uwe.ac.uk/sport).



Jason Gardener trying out the new equipment with UWE students

# Installation by UWE graduate revealed at DKNY Bond Street store

A graduate from the Bristol School of Art, Media and Design is celebrating the launch of a unique installation at the flagship Bond Street store of DKNY in London.

Megan Taylor won a commission from DKNY at the New Designers 2006 exhibition earlier this year to design a site specific installation. One of the most prestigious prizes at New Designers 2006, the win has presented a fantastic opportunity for the new graduate to show off her ability and launch herself into a highly competitive professional arena.

Megan said, "I have created a design that is quite similar to the piece I did for New Designers. The judges from DKNY liked this design and were keen that I develop something with the same look but with the flexibility to adapt to the changing colours of seasonal in-store collections.

"The resulting installation uses wood and black rubber and brightly coloured felt. The felt I have used on this occasion is the same dark green and blue used for this season's collection, but the idea is that this can be easily changed so that the installation complements rather than clashes with collections on sale."

Megan studied the groundbreaking Textiles Design course at UWE where students are encouraged to broaden the contextual possibilities of the subject by exploring a whole range of textile and non-textile materials. Traditional techniques such as cutting, stitching, knitting and printing ordinarily associated with textiles are employed but students experiment with a range of materials such as rubber, wood, metals, plastic etc to produce often sculptural looking results.

Megan is hoping that this installation will kick start a series of commissions. She said, "I am realistic enough to know that I have to get some bread and butter work but ideally I'd like to combine working in the textiles design industry with the chance to do more one-off commissions."

Debbie Southerland, UWE's Textiles Programme Leader, said, "It is very exciting to see that Megan's winning commission has worked so successfully. I'm sure she will be a name to look out for in the future."

Professor Paul Gough, Dean of the Bristol School of Art, Media and Design, said, "We are proud of Megan's achievement. The way she has responded to the commission set by DKNY is exemplary and is a brilliant endorsement of the relevance of the UWE textiles programme to the demands of the creative design industry."



*Megan Taylor with the installation she has designed for the DKNY store in Old Bond Street, London*

## Increased efficiency of Herceptin test to benefit women with breast cancer

A joint venture between the University and the European Collection of Cell Cultures (ECACC) has produced sophisticated quality control slides, called HER2 *plus*, to accompany tests that establish which women diagnosed with breast cancer might benefit from the use of the anti-cancer drug, Herceptin.

The slides established by Dr Anthony Rhodes, a senior lecturer in cellular pathology in the Faculty of Applied Sciences, manufactured and marketed by ECACC will increase the efficiency of HER2 testing. With an estimated 41,000 women diagnosed each year with breast cancer and with new NICE guidelines recommending that all breast cancer patients be tested for Herceptin eligibility, it is important that HER2 testing is performed in the most efficient manner possible.

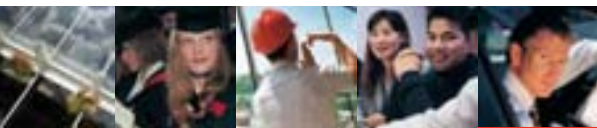
Dr Rhodes explains, "Herceptin is only effective in women with breast cancer whose tumour cells have significant amounts of Human Epidermal Growth Factor 2 (HER2). Put simply,

Herceptin targets HER2 and reduces cell signalling which in turn reduces tumour cell growth."

The CE marked HER2 *plus* slides are composed of cancer cell lines with high, low and intermediate levels of HER expression and serve as a sophisticated quality control system to run alongside the patients sample and ensure the reliability of the test results. Dr Rhodes continues, "For patients with breast cancer and their oncologists this will help improve the efficiency of testing for eligibility for Herceptin therapy. However, pathology laboratories will still require significantly greater funding in order to cope with the increased work load in testing the 41,000 women diagnosed each year with breast cancer."

Dr Rhodes was interviewed on BBC Points West on 4 October.

For more detailed information about HER2 *plus* please view the European Collection of Cell Cultures web pages at [www.ecacc.org.uk](http://www.ecacc.org.uk).



# Round Table

'Round Table' is the new University-wide learning opportunity for students to support their learning, offer guidance for their Personal Development Planning, and enhance their employability.

Jonathan Bradley, Dean of Students, explains what it is all about, "This new initiative is being developed as part of the Student Experience programme and in response to the needs of students, many of which were highlighted in the National Student Survey. Students asked in particular for more enthusiastic and interesting teaching; prompt feedback; guidance on module choices and guidance on personal development - being able to identify what skills they have gained from modules.



Jonathan Bradley

"The key features of 'Round Table' are:

- Students will meet in small groups with a member of staff on hand to guide them.
- The group will become a true 'learning community' and help students to establish an early sense of belonging to the University.
- 'Round Table' will be progressive and targeted - changing as the needs of students change. Early on the emphasis will be on learning skills and the transition to HE, and this will develop into a peer facilitated learning experience with the focus on employability from Year 2.

"Roger Conlon (BSAMD) and Steven Neill (FAS) are the Joint Project Leaders of the Round Table. Pilots are now underway in 18 programmes in six Faculties drawing on existing good practice. The Faculty leads are: Dawn Mason (BSAMD); Julie McLeod and Roy Pope (FAS); Sarah Mackie in BBS; Helena Wildblood (CEMS); Paul Snelling (HSC); and Lisa Harrison (HLSS).

"By drawing the best examples of facilitation and peer group learning from across the University we are creating a valuable experience for the UWE student and a distinct approach to learning and teaching for the University. Feedback from students and staff taking part in the pilots will be critical in the final development of the 'Round Table'. On 6 December those taking part will meet for a day long event which will provide feedback for the development of the programme."

One of the pilots underway in BBS has already received positive feedback from students. Sarah Mackie and Janice MacInnes are tutoring two groups of 25 students on the BA(Hons) Business Studies with Human Resources Management. Designed with Associate Dean Jane Harrington, the programme aims to create the face to face contact that students have asked for.

Sarah Mackie said, "We want students to feel supported in developing their learning skills and making the most of their time here as soon as they join us. I have a student in my pilot group who actually started the course in September 2005 but left before Christmas last year. He has now re-started his studies and says if this new course had been in place at that time, it might have prevented him from dropping out. This is exactly what we hope this programme will achieve.

"The initial focus for the BBS pilot will be on personal awareness, learning skills, and setting learning goals. Students meet for two hours a week with the same group and tutor. There is the opportunity for a one to one session with the tutor each term and the potential for e-mail contact. This programme gives us the time and space to get to know students and it gives students the support they need to make the most of their studies as well as acquiring the skills and knowledge they need to help them in their future choice of career."



Janice MacInnes and Sarah Mackie

## Does anyone listen to transport planners?



This question amongst others was raised at a 'Question Time' style event held to celebrate the inaugural meeting of the South West Branch of the

Transport Planning Society at the Watershed on 27 September.

The event was organised by Dr Kiron Chatterjee (above) from the Faculty of the Built Environment. Dr Chatterjee is also the South West Representative for the Transport Planning Society.

The panel included Anan Allos (Scott Wilson), John Grimshaw (Sustrans), Helen Holland (Councillor at Bristol City Council and Member of CfIT) and James Cowling (Bristol Evening Post) who all have a stake in the local transport planning agenda. The panel was chaired by Peter Stonham.

Dr Kiron Chatterjee explains, "The growing number of people working in the transport profession are fragmented into different areas of expertise and it is inevitable that this has hindered the development of improved transport in the south west. The Transport Planning Society brought together different transport professionals in the region to engage in discussion.

"The inaugural event involved a 'Question Time' style debate. Transport professionals indulged in some self-analysis to examine whether we achieve in our work what we aim to do and, if not, why not. The presence on the panel of a politician and journalist enabled us to look outwardly at how we are perceived and how we might better succeed in benefiting the people of the south west and in achieving job satisfaction."

# Hong Kong Professor is awarded Honorary Degree

Professor Arthur Kwok Cheung Li, Secretary for Education and Manpower of the HKSAR in Hong Kong, has been awarded the Honorary Degree of Doctor of Laws by UWE in a special ceremony in Hong Kong.

The award was conferred by the Vice Chancellor, Sir Howard Newby, at a ceremony held at the Ritz Carlton Hotel in Hong Kong on Monday 16 October.

The oration was delivered by C Y Leung, Chairman of DTZ Debenham Tie Leung Asia, a leading property services company and Convenor of the Non-official Members of the Executive Council, HKSARG.

Professor Li is being honoured for his outstanding contribution to the development of HE in Hong Kong and to the special relationship between the universities in Hong Kong and the University of the West of England.

Sir Howard Newby says, "UWE has developed relationships with a range of institutions in Hong Kong to provide potential progression opportunities for study in the UK. Professor Li has made an outstanding contribution to widening participation and providing educational opportunities for people who traditionally did not enter Higher Education in Hong Kong and this commitment mirrors UWE's widening participation strategy. We are delighted to honour him in this way."

Professor Li studied medicine in the UK and USA and worked as a consultant at the Royal Free Hospital, London before taking up a post as the Foundation Chair of Surgery at the Chinese University in Hong Kong in 1982. He subsequently

served as Dean of Medicine and then Vice-Chancellor of the University until he resigned in July 2002 to become Secretary for Education and Manpower of the Hong Kong SAR Government. His portfolio covers all phases of education from kindergartens to universities, from vocational training to employee retraining.

Professor Li has had extensive experience in managing large and complex academic institutions and has always striven for excellence in his academic and professional work. He has a very long list of awards, prizes and fellowships. Between 1997 and 2000, Professor Li was awarded Honorary Fellowships of The Royal Society of Medicine, The Royal College of Surgeons of Ireland, the Association of Surgeons of Great Britain &

Ireland, the American College of Surgeons and the Royal College of Physicians of London. In 2004, he was inducted as a Regent to the Court of The Royal College of Surgeons of Edinburgh.

To date, Professor Li has published over 300 original articles in international peer-reviewed journals, and numerous book chapters and abstracts.

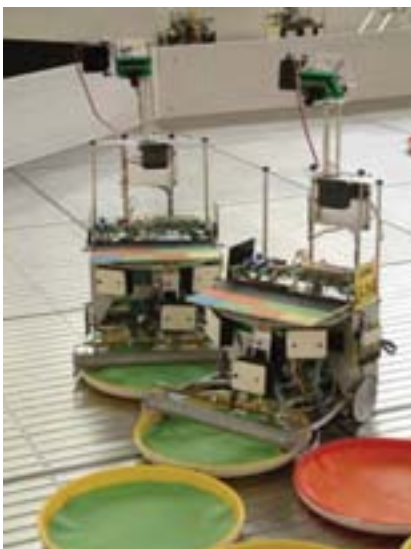
*Professor Arthur K C Li*



## Robot drama at 'Thinktank'

Would you like to have your house cleaned automatically by a robot? Would you trust a robot babysitter? Do you think you could fancy a robot partner? If a fully functional, thinking robot could be developed, would you consider it human?

All of these questions and more were up for discussion at 'Robot Thought', an interactive science show that launched on Saturday 21 October at Thinktank, Birmingham science museum for one week only. With performances at 12.30 and 2.30 daily, this family show challenged and stimulated public thinking about the latest developments in robotics.



*Swarming robots*

Robotics researchers from the University of the West of England, Bristol, teamed up with the Thinktank science museum to produce this fun, entertaining show. Audiences found out what a robot actually is and discuss the many uses of robots, from cleaning or homework to space travel.

On Friday 27 October the show was extended to include a visit from Dr Alan Winfield, Hewlett

Packard Professor of Electronic Engineering at the University of the West of England, Bristol. Alan showcased UWE's Swarm Robotics research: robots that can self-organise using simple ant-like intelligence.

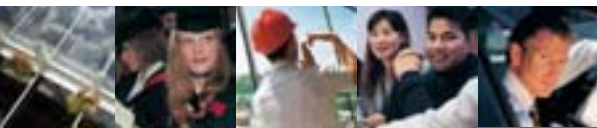
UWE Researchers designed the event with funding by the EPSRC (Engineering and Physical Sciences Research Council).

Speaking before the event took place Alan said, "Here at UWE we have one of the largest and most highly regarded robotics research portfolios in the UK. We also have a long history of finding ways of taking the expertise of our scientists and academics to non-specialist audiences through demonstration lectures and events. I am very excited about this event as it will give people the opportunity to ask questions about robots and the future of robotics. Research has shown that having a discussion about science issues and ethics is one of the best ways of encouraging greater interest in science and engineering amongst young people."

## Sir John Gieve speaks at UWE on UK Business investment

Sir John Gieve, Deputy Governor of the Bank of England, delivered a speech entitled 'The Puzzle of UK Business Investment' to staff and students at the University of the West of England on Tuesday 26 September 2006. Detail of his speech can be found at [www.bankofengland.co.uk](http://www.bankofengland.co.uk).





## UWE print experts show the way

UWE expertise in large-scale digital printing has led to a new Knowledge Transfer Partnership (KTP) with West Country vehicle graphics and road-sign manufacturer Ringway Signs.

The company, based in Weston-super-Mare, has worked on prestigious signage projects from the Channel Tunnel Rail Link to the Commonwealth Games. They also design and produce graphics for public service vehicles such as police cars and ambulances. UWE's Centre for Fine Print Research has a long history of developing digital print wide-format applications. This new partnership will help the company speed up the production of graphics for 3D objects such as vehicles, and produce road signs that can cope even better with harsh exterior conditions.

Richard Gregg, managing director of Ringway Signs, said: "We are really excited at this new partnership. Ringway has a track record of delivering innovative, high quality products and services – and it is thanks to the strengths of collaborations like these that we can deliver them.

"This partnership with UWE will help develop our design potential and lead to an integrated approach to digital design and print workflow. These innovative practices will enable us to take advantage of new market opportunities."

The two-year KTP is worth £112,000 and is supported by the Department of Trade and Industry and the Arts and Humanities Research Council. The funding will enable the recruitment of a recent art or design graduate to work with academic supervision from Professor Stephen Hoskins, director of UWE's Centre for Fine Print Research.

Professor Hoskins said, "This three-way partnership will benefit all parties – as well as creating a new employment opportunity it enables the Centre to apply its expertise in a real world context, and gives Ringway Signs access to the latest in digital print research."

## UWE revamps student catering

Catering services on Frenchay Campus have undergone a major refurbishment. The old dated refectory has been gutted and reborn as 'onezone'. 'onezone' boasts a cool but comfortable atmosphere with an open plan serving area leading into a light and airy dining room with seating for 600 including lounge areas.

Retro style décor is balanced with light oak furnishing in the dining area and the new 'onezone lounge' with comfy leather sofas completes a look designed by interiors specialist Lesley Whil.

The refurbishment project was managed by a team at UWE and the design brief written by Catering Operations Manager, Jayne Seymour. Jayne is very enthusiastic about the new look she said, "The students obviously appreciate the changes and the food as takings have already risen by 15% on last term. We have tried to make mass catering an experience to be enjoyed by all. The serving area has been opened up to the dining space and this makes the atmosphere more relaxed because it feels more spacious.

"We have also divided up meal choices into distinct areas so it is easy for students and staff to either grab a quick bite to take back to the office or to opt for a more substantial meal. Menus are designed around healthy eating and we use locally sourced fresh vegetables whenever possible. Customers can now select from a wide range of options including noodles at 'Theatre' where they can watch as the chef cooks meat, fish or vegetable noodles to order.

"A self serve salad bar has an ever changing range of healthy salads or if students just want some hearty fare we have all day breakfasts, an 'Express' fast food counter featuring pizzas, chicken and occasionally organic beef burgers. There are also daily specials that tend to be more substantial dishes like roast meals, lasagnes, cottage pies and curries. In addition to this the 'onezone lounge' will serve 'Seattle's best coffee' which is a starbucks brand.

"We will shortly extend the service so that we provide 'takeaway' choices. As we now have 2,000 students living on the doorstep we want to deliver as comprehensive a service as possible to make life easy and comfortable. The 'Takeaway' range will include curries, pizzas and boxed salads all sold at very competitive prices. In fact everything is sold at prices benchmarked against high street prices as we are aware that students need to budget carefully."

'onezone' will also come into its own as a catering outlet during the summer period when students are on holiday. The University is fully booked for summer schools during 2007 and the upgraded catering will ensure that conference and summer school customers are well served.

'onezone' opening hours are Monday to Thursday 09.00 to 18.00; Friday 09.00 to 16.00; Saturday 11.00 to 16.00 and Sunday 12.00 to 16.00.



Jayne Seymour pictured with 'onezone' noodle chef Richard George

# 'I'm giving up flying for good' says Transport student

Concerns about the damaging impact fossil fuels are having on the planet have inspired transport planning student, Joshua Hart to pledge never to fly again. This is no hollow declaration - Joshua has arrived at UWE after completing a journey from his home in California, USA, by travelling over land and sea by streetcar, bus, bicycle, train and a German freighter ship.

The journey took 14 days and included four days on an Amtrak train to Montreal, nine days on board the freighter ship, MSC Malaga from Montreal to Antwerp and the final leg of the journey from Antwerp to London by Eurostar. Joshua broke the journey for a week in Montreal to work with 'Velogik' an organisation that teaches elementary aged children about climate change and bicycle repair.

Joshua talks about what he calls the liberation resulting from his decision. "The recent growth of low cost short haul air travel is a direct threat to the stability of our planet's atmosphere and I refuse to participate in it any longer. No one should be able to dictate how you get around - it's more important than ever that people think for themselves.

"It is increasingly evident from many recent reports that the rapid build up of carbon in the atmosphere will have terrible environmental consequences with predictions of increases in drought, flooding, extinction of species, and extreme weather. When the worst hits, we may wish we had quit our fossil fuel habit earlier, but by then it will be too late. I'm just doing what I can do as an individual to make the Earth habitable for our children.

"But I don't believe that a pledge not to fly will have a limiting effect on my experience of travel. It wasn't too long ago that all long distance travel simply took a long time, and people just didn't do it that often. It was a special thing, and cultures were less homogeneous than they are now. With climate change occurring, and oil supplies dwindling, the indications are that we are returning to such a time soon, and I don't think that's necessarily a bad thing.

"The highlights of my journey included learning new blues chord combinations from a pair of Chicago musicians on the train, watching dolphins swim alongside the ship, getting to know the Filipino crew and experiencing the vastness of the Atlantic Ocean despite five metre swells and initial sea sickness.

"On an airplane you travel from one generic airport located in ugly suburban sprawl to another airport located in even uglier suburban sprawl. The only exchange with the places and people in

between are a fleeting glimpse from 30,000 feet, a roar in the sky heard from below, and the ugly legacy of an abruptly warming planet.

"So my experiment is now complete. It is possible to travel from San Francisco to Bristol without flying and now I'm about to embark on a new adventure. One that will bring me into contact with some of the best minds in the world working on our biggest transport problems."

Joshua started his MSc at UWE's internationally renowned Centre for Transport and Society this September. Glenn Lyons, Director of the Centre said, "We all feel very inspired by Joshua's commitment to leaving a low carbon footprint. We may not all be able to follow his lead in behaviour but we should all be concerned about a globalising society that is becoming 'plane dependent' at a time when climate change is set to redefine the very economics of our modern world. Well done Josh - we look forward to exchanging views during your time studying with us."

Joshua rides his bicycle from St Andrews to Frenchay Campus every day, and maintains a blog at <http://web.mac.com/joshuahart>.

This story was featured on BBC Points West, ITV News and local press.



Joshua Hart on board the MCS Malaga

## Freedom of the city for Honorary Graduates of UWE

On 11 September 2006, a special ceremony was held at Bristol Council House to confer the 'freedom of the city' on Peter Lord, Nick Park and David Sproxton from Aardman Animations Ltd. The ceremony was attended by Sir Howard Newby, Lady Newby and Professor Paul Gough who were all delighted that the UWE link with Aardman Animations was mentioned in the citation to mark their achievements.

That part of the citation is quoted here:

"In addition to the massive commercial success Aardman has achieved with its shorts, commercials and feature films, the company is a life-time supporter of Bristol as the city to work

and live in and it is a passionate advocate of British talent and style of humour. Also, Aardman and its key personnel are strong supporters and advocates of training and development of new entrants into the industry and the company was instrumental, along with the University of the West of England, in setting up the Bristol School of Animation and this Programme is now a world renowned course which includes the support of other key Bristol animation companies."

UWE Big Band provided entertainment and played the Wallace and Gromit theme tune.



# Hot or Not?

Find out if your business idea has got what it takes.

the **BizIdea**  
competition 06/07

Sign up NOW at  
[www.uwe.ac.uk/business](http://www.uwe.ac.uk/business)  
and click on the logo

Open to all UWE staff, students and alumni *(graduates of up to five years)*

PRIZE  
FUND  
includes  
£16,000  
CASH!

Sponsored by:



HASELTINE LAKE  
CONFERENCE & MEETING VENUE



Osborne  
Clarke 

#### Awareness Days

Red Bar - Frenchay Campus  
6 November 1230-1430 & 1630-1730

SU Bar - Bower Ashton Campus  
7 November 1430-1630

#### Launch

Street Café - Frenchay Campus  
13 November 1700-1900

Talk to us with no obligation and confidentiality assured

[enterprise@uwe.ac.uk](mailto:enterprise@uwe.ac.uk)  
Telephone: 0117 32 83272



# Is your BizIdea hot or not?

Find out if your idea for a business or social enterprise has got what it takes at TheBizIdea 2006 launch at the Street Café, Frenchay Campus, on 13 November, 17.00 to 19.00.

Business experts will be on hand to provide friendly advice to budding entrepreneurs, including a panel of successful business people and previous winners to answer questions and explain the benefits of entering the competition.

Both individuals and teams can enter, as long as at least one team member is a UWE student or staff member, or graduated from UWE in the last five years. Representatives from the sponsors – UWE, Business Link, Lloyds TSB Business, Osborne Clarke, and Haseltine Lake – will be there to explain the guidance and support in business planning available to entrants in the form of seminars throughout all stages of the competition.

Seminars will be held during November and December 2006 – on topics such as ‘Coming up with a good idea’ and ‘Finding money for your idea’. Budding entrepreneurs can sign up for these seminars online or at the launch event.

The BizIdea presents the chance to win two £5,000 cash prizes, one for a Business Idea and one for Social Enterprise – both prizes include a year’s rent-free seat in UWE’s Business Incubator; two runner-up awards of £2,500 cash and up to ten merit awards of £100. UWE can help assist entrants with preparing a business plan and all discussions on business ideas will be treated in the strictest confidence. Sign up to attend the launch online [www.uwe.ac.uk/business](http://www.uwe.ac.uk/business) and click on the red hot chilli logo.

For more information, contact [Katie.Trotman@uwe.ac.uk](mailto:Katie.Trotman@uwe.ac.uk) tel: 83272.

## “Making Progress”

Sir Howard Newby would like to update you on progress being made on the University’s priorities

Monday 6 November 2006 - 14.00 Bower Ashton Campus - Room 0A2

Monday 13 November 2006 - 12.30 - Frenchay Campus - Lecture Theatre 2B020

Monday 13 November 2006 - 13.30 - Frenchay Campus - Glendinning Lecture Theatre (2D67)

The presentation is expected to last approximately 30 minutes and will be followed by an opportunity for questions

If you wish to attend any of the lectures please can you send your response to [whatson@uwe.ac.uk](mailto:whatson@uwe.ac.uk) stating your preferred lecture with date and time in the subject box.

# International experts join race for nano computing at UWE

Dr Katsunobu Imai, from Japan and Dr Ramon Alonso-Sanz from Spain are working with Professor Andrew Adamatzky (CEMS) on cellular automata in the race to find computing models which will work with nano-scale computing devices – too small to be seen by the naked eye.

Based in the Faculty of Computing, Engineering and Mathematical Sciences at UWE Dr Katsunobu Imai, from Hiroshima University, Japan, is an internationally recognized expert in computational universality, synchronization and self-reproduction in cellular automata, reversible and conservative computing.

He has already contributed to several publications, the most recent of which is called ‘A five-state von Neumann neighbour universal hyperbolic cellular automation’, in the International Journal of Unconventional Computing.

Professor Adamatzky says, “I am honoured and delighted to have two such esteemed colleagues working with us in the Unconventional Computing Group. Around the world many researchers are trying to find nano-scale structures which can be used for computing purposes. If such structures can be found, there will be problems to overcome. These could include heat dissipation, which is also a problem with current micro processors, potential new computing languages, new circuit board constructions, mass conservation and reversibility. Dr Imai’s research is concerned with finding new computing models which can be used for nano-scale computing devices, employing ‘conservative cellular automata’.”

Dr Imai says, “A conservative cellular automata is a kind of parallel computing model widely used by physicists and engineers. When modelling a given physical phenomenon, such as growth, communication, computation or evolution it will give you an

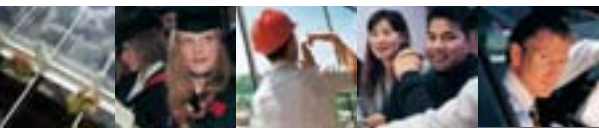
insight into the constraints which could arise. The aim is to establish a suitable conservative cellular automaton which will act as an interface between the programme and the nano-scale computer.”

Dr Ramon Alonso-Sanz is from Polytechnic University of Madrid, Spain where he teaches cellular automata to PhD students. He has published 26 papers on the subject and has been invited to present his research findings at many international conferences. His book on Cellular Automata with Memory is due to be published by Old City Publishing in 2007.

Dr Alonso-Sanz has been given funding by the Spanish Ministry for Education and Science to visit UWE for a period of four months in order to apply his unique experience of cellular automata with memory to study the role of memory in space-time dynamics of non-linear discrete systems.



*Ramon Alonso-Sanz, Andy Adamatzky and Katsunobu Imai*



## UWE wins £423K grant to catalogue Rhodesian Army archive

UWE has been awarded £423,000 by the Arts and Humanities Research Council to research and catalogue the archives of the Rhodesian army. This project will be carried out in partnership with the British Empire and Commonwealth Museum.

At present the archive is sitting in hundreds of uncatalogued boxes in the Bristol-based museum. Researchers who have investigated the boxes have found gems such as poignant photographs of soldiers on both sides of the war for independence; intelligence reports; operational instructions, and policy debates exposing the strengths and weaknesses of a doomed but desperate government. However there is no way of locating specific documents and no organising principle behind the collection, which was saved from destruction after independence in 1980 and smuggled into South Africa.

The three-year project will produce a comprehensive searchable catalogue of this unique collection, with user-friendly web-based access, and a guide to the contents. Up to 10,000 pages of material will also be digitised and included in the Aluka Struggles for Freedom in Southern Africa collection, which documents the liberation struggles in southern Africa since the end of World War II. Aluka is a separate project supported in part by The Andrew W. Mellon Foundation.



Project leader Dr Diana Jeater (left) is Principal Lecturer in African History in UWE's Faculty of Humanities, Languages and Social Sciences, and also Chair of the Britain Zimbabwe Society. She said:

"This is a really exciting collection with something for military and social historians, those interested in liberation struggles and questions of identity, and the wider community.

"For forty years, the wars of liberation in southern Africa had a profound impact on the region. Amongst those opposing African majority rule, the Rhodesian Army has been mythologised as a formidable fighting machine. This archive offers for the first time an opportunity to test the folklore surrounding this force, and to situate it in its time and place. The history of Zimbabwe and its links with Britain continue to have resonance in our communities today."

The project began in September 2006 and the results will be presented at a public conference, and provide the basis for output such as papers, books and theses. For more information on the Aluka project visit [www.aluka.org](http://www.aluka.org).

## Successful PhD workshop held in sunny Bristol

The Centre for Environment and Planning organised and hosted the Association of European Schools of Planning PhD workshop during the blazing heat in July in the CREATE Centre. 31 PhD students came from Italy (8); Netherlands (8); UK (7); Germany (4); Australia (1); Austria (1); Belgium (1) and Sweden (1) to share their research ideas, findings, and concerns with each other in an informal atmosphere. Internationally, the AESOP PhD workshop is deemed a model of best practice, which has been copied by other planning organisations around the world, most notably by the Association of American Collegiate Schools of Planning.

The team from the Faculty were composed of Angela Hull, Stuart Farthing, Ron Griffiths and Charissa de Zeeuw. Strong supporting roles were played by Martin Boddy, Murray Stewart, Andrew Tallon, Mark Steel, Paul Hoggett, and Cllr Barbara Janke. Joining Angela and Stuart as mentors, to facilitate and guide critical reflection on researcher presentations, were Professors Barrie Needham (Nijmegen University), Rachele Alterman (Technion Univ) and Michael Neuman (Texas A&M University).

The format of the workshop was a balanced mix of small group sessions; whole group sessions on methodological approaches, understanding the dynamics of the Bristol region, and broader aspects of doing a PhD and career development; and walking tours of the city inevitably ending in a bar and eatery. Other notable aspects were the use of the AESOP Young Academics' Network for receiving abstracts, papers, workshop feedback, a post-workshop forum and to send out the details, requirements and



workshop papers to participants in advance of the workshop. To get everyone off to a flying start, Stuart Farthing organised some very memorable interactive sessions testing students' geographical knowledge on the propinquity of global cities and team work to construct a 'newspaper' giraffe.

*Newspaper giraffes constructed at AESOP PhD workshop*

## UWE sponsors 'Compass of Horror' film festival

From 28 October to 9 November, Bristol will be hosting an international film festival – *The Compass of Horror* – partly sponsored by UWE and with the support of the School of Cultural Studies (HLSS) and the School of Art, Media and Design. With a fortnight of events at venues across the city, centred around a core weekend of screenings, encounters and dialogues, the festival aims to develop a vital space for creativity, debate and cultural exchange. It opens with a night at Kuumba devoted to the contemporary phenomenon of the Nigerian horror-video, a genre almost unknown outside of its home country. The Arnofilni will screen examples of horror from the four points of the compass: from Japan, *Rampo Noir*; from Nigeria, *End of the Wicked*; from Canada, *Ginger Snaps*; and from the UK, *Dust Devil*. The director of each film will be present to participate in accompanying discussion. The Arnofilni will also host sessions on The Cult Film Archive, psychoanalysis and horror, scriptwriting and production, while ArtsMatrix and Transition Tradition will run a career workshop at Kuumba. The festival will close with a short film competition, *Five Minutes of Fear*, at the Cube Microplex.

The festival is intended to be an annual event, focusing on a different genre each year, and it is just the start of a year-long programme of events in Bristol, which aims to draw together different communities across the city to mutually explore film cultures. More information can be found at [www.compass-film.co.uk](http://www.compass-film.co.uk).

## PITCH Fever Study (Paracetamol and Ibuprofen for the Treatment of fever in Childhood)

Paediatric Research Nurses from UWE and the University of Bristol, working together on this NHS funded study, have been out and about this summer promoting the study at family events. The PITCH study aims to establish the most effective way of managing fever in children aged six months to their fifth birthday. The study is investigating whether these medicines work best individually or in combination to bring down children's temperatures and relieve the fever-associated discomfort.

The study is recruiting children until May 2007. It involves parents giving their feverish child paracetamol or ibuprofen or a combination of both for 24 to 48 hours and keeping a diary card of how their child recovers.



Parents may be asked to help if they seek medical advice from the following locations:

- Their GP or out of hours GP service,
- The children's Emergency Department,
- The South Bristol Walk-in Centre
- NHS Direct

Alternatively if they feel the child's illness isn't severe enough to seek medical advice, they can contact the study team directly on the study hotline number which is 0117 331 0811.

Website:  
[www.bris.ac.uk/primaryhealthcare/pitch](http://www.bris.ac.uk/primaryhealthcare/pitch)

*Pictured from right to left Joy Farrimond with research colleague Becky Powell from the University of Bristol*

## The Glenside Clinic for Therapy and Rehabilitation

The Clinic for Therapy and Rehabilitation opened its doors to students, staff and members of the public this month. A team of experienced and highly qualified practitioners will provide quality injury management, rehabilitation, conditioning and performance enhancement. All staff are currently working within the UWE Faculty of Health and Social Care, School of Allied Professions and are dedicated to promoting clinical practice.

Services provided include; Sports Injury Management, Exercise and Rehabilitation, Manual Therapy, Physiotherapy Treatment of Back and Neck problems, Management of Chronic Pain, Electrotherapy and Biofeedback, Better Breathing Training, Inspiratory Muscle Training, Biomechanical Analysis Podiatric and Orthotic provision and Acupuncture.

The clinic will actively participate in undergraduate student development. Clients with their consent maybe observed, assessed and treated by UWE BSc(Hons) Sports Therapy and Rehabilitation and/or BSc(Hons) Physiotherapy students under the direct guidance and supervision of experienced practitioners. Individual patient confidentiality will be maintained at all times.

### Appointments

Booking for appointments please contact Denise Curtis at the UWE School of Allied Health Professions: telephone 0117 32 88416. A full price list is available. Initial assessments are usually approximately one hour with follow up appointments usually 30 minutes. The Glenside Clinic is based in K block on UWE Glenside Campus. Reception is based by the front entrance at K block.



*Treating knee pain*

## Changing Professional Boundaries and Identities in Health and Social Care: European Perspectives

On Friday 22 September, the Faculty of Health and Social Care hosted a symposium funded by the Foundation for the Sociology of Health and Illness. Faculty colleagues welcomed Professor Guido Giarelli, Professor of Sociology at the University of Bologna, Italy, Dr Majda Pahor, University of Ljubljana, University College of Health Studies, Slovenia and Dr Jonas Sandberg, Senior Lecturer in Nursing Science, Department of Caring and Public Health Science, Mälardalen University, Sweden as presenters at the symposium. UK perspectives were explored through papers by Professor Margaret Miers (UWE) and Dr Sue Philpin, Fiona Murphy and Tessa Watts from School of Health Science, Swansea University. Professor David Hughes, also from Swansea, chaired the symposium.

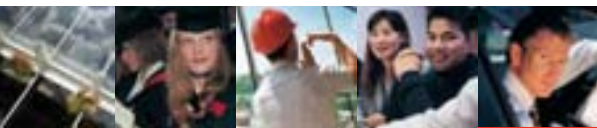
The symposium explored relationships between health and social care professionals and discussed research reporting on changes in these relationships and in perceptions of professional identities. The importance of understanding the cultural context of working practices became evident throughout the day. Symposium participants hope to find further opportunities to collaborate in

order to deepen our understanding of these contextual influences.

For further information contact [Margaret.Miers@uwe.ac.uk](mailto:Margaret.Miers@uwe.ac.uk).



*European visitors attended a symposium hosted by the Faculty of Health and Social Care*



## HSC gets top marks in Quality Review

The Faculty of Health and Social Care underwent a Major Quality Review of all of its Health Care programmes during the last academic year and the final judgements have now been published.

In summary, the Faculty received the highest possible judgement in all categories for all programmes with several areas being highlighted as good practice. The full report is available on the QAA website at [www.qaa.ac.uk/reviews/reports/health/uwe06.asp](http://www.qaa.ac.uk/reviews/reports/health/uwe06.asp)

The judgements were:

Academic and Practitioner Standards – Confidence

Quality of Learning Opportunities  
Learning and Teaching – Commendable  
Student Progression – Commendable  
Learning Resources and their Effective Utilisation - Commendable

The Dean, Dr Kevin Foreman said, "This is a tremendous result for the Faculty, University and most importantly our students. Because of the enthusiasm and commitment of the Faculty staff to provide a quality educational experience, which has once again been confirmed by QAA, our students past, present and future can be proud of the qualifications that they gain at UWE."

## Child injury prevention

A conference on child injury prevention was held at the Watershed in Bristol on 13 and 14 September 2006. This was the first Joint Injury Conference for the UK and Ireland and was co-ordinated by UWE. The local organising committee comprised Elizabeth Towner and Judy Orme from the Faculty of Health and Social Care, UWE; Paul Brown from the South West Public Health Observatory; Maggie Sims from the Avonsafe injury prevention group and Esther Heijns from the University of Bristol. The Child Accident Prevention Trust and Royal Society for the Prevention of Accidents were also involved in the conference. The conference focused on translating injury prevention research into practice and on raising the importance of child injury prevention on national agendas. There were invited plenary sessions and parallel sessions relating to the prevention of childhood injuries in the road, home and leisure environments and on policies related to childhood injuries. There was an invitation to submit abstracts for presentation at the conference early in the New Year and a closing date for abstracts in April 2007.

## UWE playwright premieres 'Salt'n'Sauce' at Alma Tavern

*Salt'n'Sauce*, a new play by Bristol playwright Tim Massey, premieres at the Alma Tavern pub theatre in Clifton from 31 October to 11 November as part of Theatre West's ten-week autumn 2006 season.

Tim – who works as a part-time library assistant in the Bolland Library – was one of 40 local writers who submitted proposals on the theme of 'Inside Out' for Theatre West's annual 'Search for a Script' in the spring. The Alma Tavern's resident company picked nine of the proposals to develop into scripts, and chose *Salt'n'Sauce* as one of four finalists to produce this autumn.

*Salt'n'Sauce* centres on a wannabe playwright who runs up a stellar credit card bill to stage a play at the Edinburgh Festival Fringe. But, with his arch rival creaming him at the box office, a megalomaniac director with ulterior motives, and a cast and crew in near revolt, he wonders if the show really must go on. *Salt'n'Sauce* is Tim's first work to be staged in Bristol since UWE's Centre for Performing Arts produced *Acid Drops*, a double-bill of plays, at the QEII Theatre in October 2001. He has not been taking a break from writing for the last five years, though.

"The Alma's my favourite place to have a play performed," Tim said. "And it's great to be working with Theatre West; a company that has produced more new plays in recent years than any other in the whole of the South West."

*Salt'n'Sauce* is at the Alma Tavern, 18-20 Alma Vale Road, BS8 2HY, at 8.30pm on Tuesday to Saturday evenings from 31 October until 11 November (no performances on Sundays and Mondays). Tickets, priced £6/£5, can be reserved by calling the booking line on 0117 946 7899. Full details of Theatre West's autumn 2006 are available online at [www.theatre-west.co.uk](http://www.theatre-west.co.uk) with further information on *Salt'n'Sauce* at [www.saltsauce.com](http://www.saltsauce.com). For further information, please contact Tim on 07890 710922 or e-mail [Tim.Massey@uwe.ac.uk](mailto:Tim.Massey@uwe.ac.uk).

## Strong HSC presence at E-learning in Practice Conference

The third annual E-learning In Practice Conference was hosted by the United Bristol Hospitals Trust in partnership with the NMS South West on 12 September. A number of staff from the Faculty were involved. Rod Ward chaired one of the afternoon themes. Carol Clark, Gail Turner and Chris Stevens presented a poster; 'On-line collaborative tool for student nurse assessment', as did Deirdre McGuigan and Pam Moule entitled, 'E-learning – experience of nurses and perceived impact on care'. Pam also presented a concurrent session on the outcomes from the ELFFS project (E-Learning and Face-to-Face Study) commissioned by the Avon and Wiltshire Mental Health Partnership NHS Trust (AWP), that involved John Albarran and Elizabeth Bessant, Deputy Director of Nursing AWP. Professor Sally Glen, Deputy Vice-Chancellor, University of Wolverhampton, presented the initial key note paper, making reference to the newly published E-learning in Nursing, text published by Palgrave and co-edited by Dr Pam Moule, with chapter contributions from a number of staff within the Faculty.

## Retirement barbeque for Steph Keeble and Mike Hibbert

Steph Keeble (CSA) and Mike Hibbert (Head of Sport and Recreation) retired at a joint afternoon event on Wednesday 30 August held on the patio outside Core 24. Steph had been at UWE for 15 years, and Mike Hibbert had been here for 31 years (16 years as Head of Sport and Recreation).

Steph had requested that any donations should go towards purchasing either a goat, a donkey or a camel from [www.oxfamunwrapped.com](http://www.oxfamunwrapped.com) and staff donations resulted in the purchase of a camel. Many thanks to all who donated.

Mike Hibbert requested that donations should be sent to St Peter's Hospice, who have replied with thanks for the £50 donation received.

Thanks to everybody who turned up and made it such an enjoyable day for Steph and Mike.

# UWE opens new cinema for students

Students can now enjoy a regular schedule of films screened at UWE's new cinema 'Scene-IT' based at Frenchay Campus.

The Scene-IT cinema is part of the ongoing investment programme to provide UWE students with the very best environment for study, accommodation and socialising.

Scene-IT has been installed in a lecture theatre located near the Student's Union. Phase one of the transformation from lecture theatre to cinema has been completed with the installation of a new wide screen, a 5:1 sound system and a brand new digital projector.

Frans Dekker, Social Events Co-ordinator in House Services, has managed the project, he said, "We are looking at all kinds of ideas to make our students feel welcome and part of this process is to provide good social facilities for our student residents on

Frenchay Campus, particularly in the evenings and at weekends. We have so far invested £25,000 in Scene-IT to provide a 16 feet by 9 feet screen and a fantastic sound system which is vital for a real cinema experience. In many ways it is the sound that makes the experience come alive so we wanted to get this right.

"The lecture theatre will revert back to normal use during the day. The next stage of the refurbishment will be to provide upgraded seating. The cinema currently seats 96 people and all the shows this term will be free of charge."

Scene-IT was launched on 17 October with a screening of suspense thriller *Sin City* starring Bruce Willis, Micky Rourke, Benicio del Toro and Clive Owen. Future screening includes *Domino*; *Mr & Mrs Smith*; *History of Violence*; *The Descent*; and *The Wedding Crashers*.

## UWE MSc student awarded professional research scholarship

Julie Ellis-Jones, a student of the MSc Advanced Practice (HSC), has been awarded a Florence Nightingale Research Scholarship to support her dissertation year. The Florence Nightingale Foundation is a living memory of Florence Nightingale in that it raises funds to support nurses in developing inquiry and evidence based practice. The awards recognise excellence in extending knowledge and skills to meet the changing needs of society.

Julie is a specialist senior research nurse working in the Urodynamics Unit which is part of the Bristol Urological Institute. Her research focus for the MSc is to establish if the current urodynamic practice of multidisciplinary teams across the South West region is evidence based. Results from this stage of inquiry will inform future plans for specific continuing professional development initiatives.

Excited by the award Julie feels it is a tremendous opportunity to support her inquiry. It also provides a sense of achievement

in gaining national recognition from professors of nursing and eminent members of society of the importance of her study.

Julie's supervisor is Lesley Moore who was awarded a scholarship in 2000 and is a National Teaching Fellow.



Julie Ellis-Jones pictured left with Lesley Moore

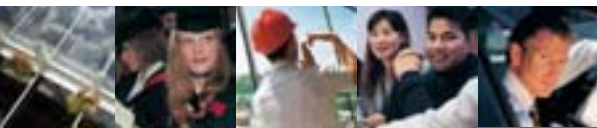
## Graduation Ceremonies 2006

7 November	11.30/14.45	Humanities, Languages and Social Sciences
8 November	11.30/14.45	Humanities, Languages and Social Sciences
9 November	11.30/14.45	Bristol School of Art, Media and Design
14 November	11.30/14.45	Hartpury College
14 November	11.30/14.45	Health and Social Care
15 November	11.30/14.45	Health and Social Care
16 November	11.30/14.45	Health and Social Care
20 November	11.30/14.45	Humanities, Languages and Social Sciences/ Joint Honours
21 November	11.30/14.45	Applied Sciences
22 November	11.30	Applied Sciences
23 November	11.30/14.45/18.00	Built Environment
24 November	11.30/14.45/18.00	Education
27 November	14.45	Bristol Business School
28 November	11.30/14.45	Bristol Business School
29 November	11.30/14.45	Bristol Business School
30 November	11.30/14.45/18.00	Law
1 December	11.30/14.45/18.00	Computing, Engineering and Mathematical Sciences

All ceremonies will take place in Bristol Cathedral, except for Hartpury College ceremonies which will take place in Gloucester Cathedral. For further information, please contact the Graduation Office at Frenchay Campus on 0117 32 83934 or e-mail [graduation@uwe.ac.uk](mailto:graduation@uwe.ac.uk)

## Nursing and midwifery simulation project pilot site

The Faculty of Health and Social Care has been awarded pilot site status for the Nursing and Midwifery (NMC) Council Simulation Project. The NMC are keen to establish whether simulation can support the development of practice skills in pre-registration nursing students. The outcomes of the project, involving 13 pilot sites, will inform future pre-registration educational provision which could see simulation replacing some of the current 2,300 hours spent in practice settings. The current project involves students from the September 2004 and January 2006 Adult and children's nursing cohorts and will be completed in December 2006. The project is being facilitated by Dr Pam Moule and Amanda Wilford from the Bristol Medical Simulation Centre. A number of Faculty staff are involved in the project- Rachel Sales, Gail Turner, Jane Feetham, Jenny Childs, Rhonda Knight, Wendy Moran, Una McKay, Lesley Lockyer and Angharad Hughes. For further information contact Dr Pam Moule, [pam.moule@uwe.ac.uk](mailto:pam.moule@uwe.ac.uk)



## UWE helps head teachers with bricks and mortar issues

The Faculty of the Built Environment is helping head teachers to become better clients by introducing them to alternative ways of commissioning building work through a groundbreaking series of new seminars. The first seminar was held in Bristol on Tuesday 17 October.

The responsibility for getting maintenance and building work done in schools has been devolved to head teachers, but many schools and colleges lack the skills and experience to manage the process effectively and get the results they want from builders and other contractors.

To meet this need a series of seminars have been created for the South West which gives schools and other education establishments the skills and information they need to make the process more effective.

Martyn Jones who is delivering the seminars for UWE said, "The need for this is greatest in Primary Schools which are the least well resourced for staff and have the least experience in this area. Those taking part will get a thorough briefing which will make them more confident and aware of the range of procurement opportunities available to them.

"This is a new initiative in construction as we take the change agenda out to inexperienced clients of construction. A lot of attention has been paid to the building of new schools, but what is rarely discussed is the maintenance of schools which accounts for a very large part of government spending in this area and has a major impact on the quality of the student experience."

The seminar addressed questions such as:

- How can we ensure that our building maintenance budget is realistic?
- How can we manage the maintenance of our buildings more effectively?
- How can we avoid costly emergency repairs?
- How do we get the best from our suppliers and what educational benefits can they bring?

Topics covered included: The role of buildings in education; Effective budgetary control; Working as an integrated team; and Investing in the future.

The presenters include Martyn Jones, Principal Lecturer in Construction Management at UWE; Andrew Jarvis, Head of Corporate Building Services, Gloucestershire Council; Paul Evans, Property Services Manager, Solihull MBC; Mike Turner, Business Development Director, Ian Williams Ltd; David G Cornish, UK Trade Customer marketing Manager, ICI Paints.

The seminars are sponsored by ICI Paints and Ian Williams Ltd, a major service provider of responsive and planned repairs and improvements for public and private sector clients particularly in the field of education.

## School of English and Drama launches South-West Early Modernist Network

From October 2006, The School of English and Drama, (HLSS) is the new home of the South-West Early Modernist Network: a new initiative bringing together early modern scholars from across the South West.

At the first meeting of the network, on 16 October 2006, Dr Tracey Hill (Bath Spa University) spoke on 'What we don't know about the early modern Lord Mayor's Show'. Tracey Hill's paper will be followed by a launch reception. Both events take place in room MO09, St Matthias Campus.

The South-West Early Modernist Network brings together scholars from the major universities in the region (University of Bristol, Bath Spa University, Cardiff University and the University of Gloucestershire).

The idea to start up the scholarly forum originates with Dr Lene Petersen, School of English and Drama, in response to the lack of a regional meeting ground to boost research into early modern studies. The idea met with great enthusiasm amongst early modern scholars in the region, with distinguished colleagues from Cardiff and Bristol, Bath Spa and Gloucestershire expressing interest and support for the initiative.

The South-West Early Modernist Network aims to meet two or three times per semester to disseminate and discuss new research and work-in-progress, spanning a wide range of topics and fields of enquiry. The meetings will take place at St Matthias Campus putting the School firmly on the map of scholarly activity in early modern and renaissance research.

Lene Petersen, said, "I hope the initiative will provide an informal forum for debate and support for early modern researchers in the region. With the support expressed by colleagues such as professor Richard Wilson (Cardiff University), professor Martin White (University of Bristol); Tracey Hill and Ian Gadd (both Bath Spa University), and Simon Barker of the University of Gloucestershire, I have no doubt this will prove a productive venture for all involved, including UWE's own substantial community of early modern scholars."

For further information contact Lene on 0117 32 84457 e-mail Lene.Petersen@uwe.ac.uk

### The Alternative Series 2006

## Genocidal Rape: Breaking the Silence

Professor Debra Bergoffen

Professor of Philosophy

George Mason University, Fairfax Virginia, USA

Abstract: Rape is the dirty secret of war. Though it has been officially identified as a war crime for centuries, rape is the silent crime, the accepted crime, the war crime that is rarely if ever prosecuted. When the UN International Criminal Tribunal for the former Yugoslavia determined that genocidal rape was a crime against humanity, all that changed. This talk discusses the significance of that change for our understanding of war crimes, women's rights and human rights.

**Wednesday 29 November 2006 at 19.00**

Venue: Glendinning Theatre (Room 2D67), Frenchay Campus, UWE, Bristol

This lecture is free but it will be necessary to reserve a place.

For further information, please contact Rose West on 0117 32 84372, or e-mail Rose.West@uwe.ac.uk

# Raising the profile of Public Health teaching in the South West

Professor Selena Gray (HSC) has lead a successful bid for £220,000 Department of Health funding over the next two years to assist the creation of the South West Teaching Public Health Network (SWTPHN). This will form an important link in the Department's strategy to promote public health teaching throughout its workforce. This is a collaborative bid involving all universities and teaching primary care trusts (tPCTs), supported by a team in HSC including Judy Orme, Jane Powell and Jon Pollock. The SWTPHN will use teaching PCTs as its local lynchpins to work with universities to develop high quality public health education and training across the South West for the whole of the workforce from health or social care assistant through to senior public health practitioner level.

The Department of Health was particularly impressed with the UWE bid given the size of the geographical area involved and the impressive range of partners on board.

Professor Gray said, "The aim of the network is to harness existing skills and resources to optimise Public Health education and training opportunities in the South West Region. Our goal is to

achieve an increasingly public health-oriented, aware and skilled workforce."

For further information: [Selena.Gray@uwe.ac.uk](mailto:Selena.Gray@uwe.ac.uk).



The HSC team, left to right: Professor Selena Gray, Jon Pollock, Jane Powell, Judy Orme

## School of English & Drama: Staff Research Seminars

All sessions begin at 16.30 and end at 18.00; they are held at the St Matthias Campus at Conifers in Room 002. For further information, contact Professor Peter Rawlings ([rawlings2000@aol.com](mailto:rawlings2000@aol.com)).

<b>1 November 2006</b>	Dr Ann Alston	<i>Playing Happy Families: The Unchanging Construction of the Family in Children's Literature</i>
<b>15 November 2006</b>	Gill Foreman-Ahn	<i>Practical Theatre</i>
<b>28 February 2007</b>	Professor Peter Rawlings	<i>"Dullness and Stupidity": A Reconsideration of Lionel Trilling's The Middle of the Journey and The Liberal Imagination</i>
<b>15 March 2007</b>	Dr Ben O'Donohoe	<i>Sartre: A Playwright for his Time</i>
<b>26 April 2007</b>	Caroline Hadley	<i>Liberating Expression or Affirming Fears: Strasberg's Psychophysical Approach ("The Song and Dance Exercise")</i>
<b>10 May 2007</b>	Dr John Reid	<i>Speaking Author-wise with McDonagh: How to Smother The Pillow Man</i>
<b>24 May 2007</b>	Dr Lucy Nevitt	<i>America the Beautiful: Wrestlemania 22 and the US "War on Terror"</i>

## Award for 'Politics and Emotions' seminars

Dr Simon Thompson and Professor Paul Hoggett (School of Politics, HLSS) were recently awarded £15k for an ESRC Research Seminar Series on 'Politics and Emotions' which will run for two years from this October.

Talking about the seminars, they said that politicians, political managers and activists become aware from time to time of the vital role that emotions play in politics. An emotion like anger not only drives mobs to violence. It can also galvanize citizens to take part in a political movement which fights injustice. Fear gives rise to attempts to guarantee homeland security. It may also be the spur for dialogue and understanding.

However, despite the prevalence of emotions in political life, Simon and Paul argue that the study of politics within academia is for the most part firmly attached to rationalist models of the human subject which split off head from heart and body. In this research seminar series they seek to challenge such rationalist accounts of politics in order to give emotions their due. In particular, their aim is to show that both reason and emotion are always present in political thought and action.

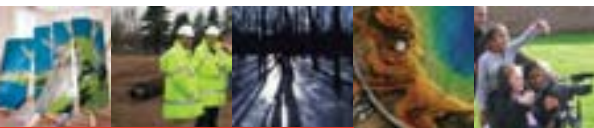
By thus developing an innovative framework for understanding the emotions, Simon and Paul want to examine the patterns and flows of affect in different political environments. They intend to explore, amongst other things, the impact of new

methods of public consultation, the growing importance of the politics of reconciliation, and the new politics of fear and insecurity. Their hope is that these seminars will open up a new space in which we can think about the emotions involved in politics, and about the politics of the emotions.

The seminars will be held in December 2006, February 2007, June 2007, October 2007, February 2008, June 2008. They will focus on the following topics (although not necessarily in this order): Managing the Emotions of Failure in the Public Services, Emotion, Antagonism and Deliberation, Politics and the Triumph of the Therapeutic, The Affective Dimension of Political Mobilization, Politics and Fear, and The Politics of Reparation.

The first seminar, Emotions, Antagonism and Deliberation, will be held at UWE, Frenchay Campus on Wednesday 13 December. Speakers will include Marian Barnes (University of Brighton), Alison Gilchrist (Community Development Foundation), and Bas van Stokkom (University of Nijmegen).

If you are interested in receiving further information about this series of seminars, please contact Simon or Paul or e-mail [ESRCemotions@uwe.ac.uk](mailto:ESRCemotions@uwe.ac.uk). Or visit [www.uwe.ac.uk/hlss/research/cpss/politicsandemotions/index.shtml](http://www.uwe.ac.uk/hlss/research/cpss/politicsandemotions/index.shtml)



## Research

UWE has won funding from the AHRC to research 'Young Masculinity and Vocal Performance'. **Dr Martin Ashley** will be working for six months to find out whether albums such as the Three Choirboys really are 'cool' and if so, for whom. The project is set to become the definitive work on why solo singing has become popular with boys at the expense of choir singing. It will be looking in depth at some of the issues boys face in constructing their 'young masculinity' through engagement in the performing arts."

**Dr Ana Sendova-Franks** in the School of Mathematical Sciences, CEMS, has been awarded a 2006 Leverhulme Trust Research Fellowship for research on the project *The Collective Intelligence of Movement in Ants*. This prestigious Research Fellowship will give Ana the opportunity to investigate a fundamental characteristic of the collective intelligence of insect societies: how ants solve the problem of movement interference inside their nests. The results will impact on our understanding of biological organisation and have potential applications in artificial intelligence and collective robotics in particular. This in turn opens avenues for further bids in the future. For other projects funded this year under the Leverhulme Trust Research Fellowships, please visit the online issue of *The Times* from 15 September 2006 ([http://www.timesonline.co.uk/article/0,,61-2358234\\_2,00.html](http://www.timesonline.co.uk/article/0,,61-2358234_2,00.html)).

## Conferences

**Roy Light (Law)** chaired and gave the opening address at a conference on the Gambling Act 2005 held at the Royal Kensington Hotel, London on 27 September 2006.

**Stuart Allan (HLSS)** was invited by Hofstra University in New York to speak at *The Future of September 11* symposium held to mark the fifth anniversary. It was co-organised with the World Trade Centre Family Centre, which meant that family members of those lost in the Twin Towers were in the audience. Stuart's research in this area includes the co-edited book *Journalism After September 11*.

**Professor David James (EDU)** presented two papers at the recent British Educational Research Association (BERA) annual conference at the University of Warwick, one on assessment in post-compulsory education and the other on school choice and social class. The papers were co-authored with **Jonathan Simmons (EDU)** and **Phoebe Beedell (EDU)** respectively. At the same conference David was the invited discussant for a well-attended Keynote Symposium on the utility of Bourdieu's thinking in educational research which combined contributions from Prof Diane Reay (Cambridge), Prof Michael Grenfell (Southampton) and Dr

Peter Stevens (Institute of Education, University of London). The Symposium has been selected to represent BERA at the prestigious Annual conference of the American Educational Research Association in Chicago, April 2007. The session will be chaired by Professor Geoff Whitty, president of BERA, and Prof Michael Apple will join David James in the role of discussant.

**Victoria Davenport (FAS)** attended the 15th International Pathogenic Neisseria Conference in Cairns, Australia, where she gave an oral presentation (in the vaccine session) entitled 'Naturally Acquired Mucosal Immunity to Neisseria meningitidis is Reprogrammed by Vaccination' (15-20 September 2006). A poster of this work (with the same title) was presented at the First Joint European Conference of Immunology in Paris, France (6 - 9 September 2006)

**Martin Boddy (FBE)** and **Don Webber (BBS)** presented findings of an analysis of the economic performance of Wales and its sub-regions to representatives of the Welsh Assembly on 6 July. The work drew on innovative analysis of data recently made available by the Office for National Statistics and is one of a number of projects they have undertaken using this data-source including recent work for the South West of England Regional Development Agency.

**Professor Gisela Shaw (European Studies, HLSS)** made an invited presentation on 'The Liberal Professions - A Very Special Type of "Undertaking": a Socio-Historical / Socio-Cultural Perspective' to a high-profile European audience of over 400 members at a European colloquium held at Lyon on 26 June this year. The conference was organised by the Cercle Jean Monnet of the Faculty of Law at the University of Lyon 3 and 7 for professions in the region of Rhône-Alpes such as auditors, accountants, advocates, notaries, bailiffs, surveyors and architects. The conference, the first of its kind, had the aim of attracting attention to the contribution to society and to the economy made by the regulated liberal professions in Europe generally and in France in particular, in the face of the European Commission's deregulation measures. Preceding the event, Gisela was interviewed by *Paroles d'experts*, the journal of the accountants of Rhône-Alpes. The interview was published on 18 June under the heading 'La solidarité interprofessionnelle pèsera dans la balance'.

On 7 September 2006 **Professor Alan Winfield (CEMS)** gave an invited plenary lecture on the Walking with Robots project at the 15th IEEE International Symposium on Robot and Human Interactive Communication (RO-MAN 06), hosted by the University of Hertfordshire.

**Professor Alan Winfield (CEMS)** co-organised and co-chaired the Simulation of Adaptive Behaviour "From Animals to Animats" (SAB 06)

workshop on Swarm Robotics in Rome, Italy, on 30 September and 1 October 2006.

## Staff in the media

**Roy Light (Law)** was interviewed on Radio Bristol on the overcrowding crisis in British Prisons on 9 October 2006.

**Professor Martin Plant (HSC)** was interviewed on Sky News and BBC News 24 on 14 September discussing alcohol related issues.

**Dr Lisa Harrison (HLSS)** gave expert commentary to BBC Radio 5 on 14 September on electoral systems.

**Professor Jeanine Treffers-Daller (HLSS)** appeared on the BBC 1 programme *Inside Out* on 2 October discussing choices of secondary schools in Bristol.

**Anthony Rhodes (FAS)** was interviewed by BBC Points West Health Correspondent, Matthew Hill on 4 October about his recent development of a new test for eligibility for the use of the drug Herceptin for women with breast cancer. Anthony was also interviewed on GWR Radio.

**Professor Ron Ritchie (EDU)** was interviewed on Radio Bristol on 6 October about the recent televised local debates on the state of education in Bristol Schools. He was also interviewed for BBC 1's Politics Show on Sunday 10 October talking about home education.

## Publications

**Stuart Allan (HLSS)** has published *Online News: Journalism and the Internet* with Open University Press. The research and writing of the book was supported by the AHRC and the School of Cultural Studies here at UWE.

**Damian Warburton (Law)**: Provocation: Objective Test, Precedent— *R v (Faqr) Mohammed* [2005] EWCA Crim 1880, *Journal of Criminal Law*, Vathek Publishing, 2006, Vol. 70.2, 121; Provocation: Objective Test, Precedent— *R v James and Karimi* [2006] EWCA Crim 14, *Journal of Criminal Law*, Vathek Publishing, 2006, Vol. 70.3, 203; Smoking Out the Health Bill: *Don't Hold Your Breath!*, *Journal of Criminal Law*, Vathek Publishing, 2006, Vol. 70.4, 322.

**Peter Billings (Law)** 'Balancing Acts: Six Acts in Search of Equilibrium' [2006] 20(3) *Journal of Immigration Asylum and Nationality Law* 197-209.

**Stuart McClean (HSC)** (2006) *An ethnography of crystal and spiritual healers in Northern England: marginal medicine and mainstream concerns*. Lewiston, NY: Edwin Mellen Press.

**Victoria Davenport (FAS)** has published her author paper 'Regulation of Th-1 T cell dominated immunity to Neisseria meningitidis within the human mucosa' which has just been accepted for publication in *Cellular Microbiology*.



## Bulletin deadlines 2006

Month/Issue Copy deadline

November/63 Wednesday 1 November

It has an impact factor of 6.097. The paper describes for the first time the immune response to this organism in adult mucosal tissue, which is the site of colonisation; and importantly details how the immune response changes from children, who are very vulnerable to disease, to adults who are usually protected

Visiting **Professor Grace Dorey (HSC)** has kindly donated her latest book *Pelvic Dysfunction in Men: Diagnosis and Treatment of Male Incontinence and Erectile Dysfunction* to the Faculty library. Professor Dorey who works as a Consultant Physiotherapist at the Somerset Nuffield Hospital has written several highly acclaimed books in this area of work and is a much sought after speaker at international conferences. Professor Dorey was thanked for her kind donation on behalf of the Faculty by the Dean Dr Kevin Foreman.

**Dr Yasminah Beebeejaun (FBE)** The Participation Trap: The limits of participation for ethnic and racial groups (2006), *International Planning Studies*, Vol. 11(1), pp.3-18

## Appointments

**Wendy Hopkins (Academic Registry)** and **Rosie Woodall (MAR)** were licensed as authorised lay ministers (also called lay readers) in the Church of England on 21 October in Bristol Cathedral. Wendy is licensed to the parish of Bishopston and St Andrews, and Rosie, who is the youngest person to take on this role in the diocese, is licensed to the parishes of Frenchay and Stapleton. Authorised lay ministers have a variety of duties, which can include leading services, preaching, teaching, and assisting in pastoral care, although this may vary depending on their own calling and gifts, and the needs of their particular parish.

**Dr Peter Billings (Law)** was awarded a Visiting Research Fellowship at the TC Beirne School of Law, University of Queensland during August/September 2006. During that time he pursued research on comparative asylum law and policy and was a guest speaker as part of the School of Law Research Seminar Programme. The paper presented was entitled 'Refugee Protection Beyond Australia?'

## Staff Association

### Dates for your diaries

#### Saturday 25 November Christmas Dance

Further details of times, costs etc for these events and others will be announced as soon as possible. Look out for posters and e-mails.

#### Saturday 9 December Children's Panto - Treasure Island

Further details of times, costs etc for these events and others will be announced as soon as possible. Look out for posters and e-mails. Not open to non-members.

#### Thursday 14 December Staff Association Christmas Buffet - Glenside

This will take place in (1B27). Entrance open to Members only by pre-ordered ticket. Please note Members can only attend Glenside or Frenchay, NOT both.

#### Monday 18 December Staff Association Christmas Buffet and Grand Raffle - Frenchay

This will take place in 2Q50/51 at 12:30pm. Entrance open to Members only and will be by pre-ordered ticket. Please note Members can only attend Glenside or Frenchay, NOT both.

### Staff Association Annual General Meeting

At the AGM on Monday 25 September 2006 nominations were received for the following:

**Chair:** Gill Weadon

**Secretary:** Jean Bowles

**Treasurer:** Rosemary McLaren

**Vice Chair:** Celia Maber

**General Committee:** Val Ashley, Elizabeth Cholerton, Jill Fox, Cynthia Garland, Jeanette Hunt, Sam Jewell, Sandra Nash and Chloe Tyler

**Co-opted (non-voting) member:** Colin Parsons (3rd Age)

This will be the Committee working on your behalf for the next year 2006-07.

### Coach Club

#### Saturday 28 October Mystery Tour

Cost £9 members, £11 non-members  
Trip full, waiting list available

#### Saturday 18 November Festive Fair, NEC Birmingham

Cost £16 (members and non-members)

#### Saturday 2 December Clothes Show

The cost of this trip will be no more than £35. We cannot give an exact cost as we are still a little light on numbers for this trip to be reduced any further - tickets are being purchased very shortly.

#### Easter, 6-9 April 2007 Rouen, Normandy

Three nights staying in Rouen with excursions. Cost £150 (based on two sharing, single supplement of £55). Full notice sent separately.

#### Tuesday 19 - Saturday 23 June 2007 Royal Ascot Week

We are still taking names of those interested in this trip next year. Although numbers are low at present we still have a little longer before we have to purchase tickets. Unfortunately we cannot predict what the cost will be until ticket costs are announced at the end of November. Please let us know immediately if you are interested.

If you are interested in any of the above we look forward to hearing from you - tel: 83001 (voicemail) or Coachclub@uwe.ac.uk.

### A reminder to you that Club Representatives are:

**3rd Age** - Colin Parsons

**Coach Club** - Gill Weadon, Pat Clark and Derek Ashley

**Film Club** - Sam Jewell

**Skittles League** - Don McPhail

**Walking Club** - Amanda Cooke

## EU Research Funding Opportunities - the 7th Framework Programme

### UWE Staff Development Seminar - 5 December 2006, 2S601

Andrew Smith, a European Adviser from the UK Research Office (UKRO) in Brussels, will visit UWE on 5 December 2006. He will be discussing the latest developments and funding opportunities in the EU 7th Framework Programme for research and technological development, which is due to start in early 2007. There will be an opportunity to hear where the best opportunities for UWE researchers might be found under the new programme as well as learn about existing EU research projects at UWE.

To register and see further details visit: <http://crigs.uwe.ac.uk/intranet/events/staffseminars.asp> or contact Caroline.Bartle@uwe.ac.uk, tel: 83671 or Denise.Cooke@uwe.ac.uk, tel: 82410.

# Personnel Update

## Important message for all staff

If you have received a letter from HM Revenue and Customs, National Insurance Contributions Office, telling you that you have not made enough contributions in the year 6 April 2004 – 5 April 2005 please do not send them the amount of £371.80 referred to in the letter. Complete the section "Additional Information" and send it off to them. Contact the payroll team if you need a copy P60 from that year.

There appears to have been a mistake at the National Insurance Contributions Office which has generated this letter. If you make the payment you will have to make a claim to get your money back when the contributions you paid in your employment with UWE have eventually been posted to your record. There will be no automatic refund.

Please contact your payroll clerk if you have any concerns regarding this letter.

*Jane Cook, Payroll and Pensions Manager*

## Teachers' Pension Scheme

As there are so many changes happening to pension schemes at the moment I thought it might be a good idea to get the Teachers' Pension Scheme (TPS) expert in to give a presentation to TPS members in the new year. It might also be possible to hold one to ones with staff who would like to talk about their own situation in more detail.

If you would be interested in attending a presentation on the Teachers' Pension Scheme and/or having a one to one with a TPS expert please complete the form below and return to Jane Cook, Payroll and Pensions Manager, Personnel Services, as soon as possible.

It would be helpful if you could also indicate what you consider to be a convenient date to ensure we book a day when most staff would be able to attend.

Name (block capitals)

Faculty/Dept

Extn No

I would be interested in attending a TPS presentation

Yes  No

I would be interested in a one to one with a TPS expert

Yes  No

Date preference

Signed

Date

## Dignity at Work

As an employer, UWE is committed to promoting a working environment in which all people are treated with dignity and respect, that is free from all forms of inappropriate behaviour and one in which all employees can give of their best.

The University has established a network of advisers to offer advice and support to employees who may be experiencing unreasonable behaviour as part of their working life and be unable to resolve this problem alone.

Advisers are volunteers who have undertaken specialist training to equip them for this role. They and the University are keen to ensure that the service they provide is timely, appropriate and helpful.

More information about Dignity at Work is available from the Personnel Services website: <http://info.uwe.ac.uk/personnel/> or by contacting: [Teresa2.Stephens@uwe.ac.uk](mailto:Teresa2.Stephens@uwe.ac.uk).

## Update: Commuter card

Please note that since this article appeared in the last Bulletin we have received notification that the cost of insuring your season ticket against loss has increased from £15 to £40.

Any further information can be obtained from Elaine Smith: [Elaine2.Smith@uwe.ac.uk](mailto:Elaine2.Smith@uwe.ac.uk)

## Training Courses Schedule for all staff for 2006/7 now available on website

The training courses schedule for 2006/7 is now available on the Training/Development Website (<http://info.uwe.ac.uk/personnel/trainingDevelopment/>). If you wish to attend any course please discuss it with your line manager in the first instance and contact Staff Development to book your place.

## Visiting Lecturers – new style contracts

Discussions have been taking place during the summer to assess the impact of changes in legislation relating to fixed term contracts and Visiting Lecturers. New style contracts have been developed and these are being issued by faculties during the next few weeks. The current approach of paying via hourly rates and of averaging pay over the period of the work will remain. Please contact your VL Administrator or Head of School with any initial queries, or Linda Ward in Personnel Services.

## Centre for Performing Arts

**Alice in Wonderland** English National Ballet  
Thursday 2 November, 19.30, Bristol Hippodrome  
Tickets: £33 (stalls, normally £38)

**La Bohème** Welsh National Opera  
Friday 17 November, 19.15, Bristol Hippodrome  
Tickets: £21 (grand circle, normally £29)

These party bookings are made by the Centre for Performing Arts in order to achieve considerable discount on ticket prices. They are open to all students and staff of the University and all members of the CPA. Please add £1 booking fee to your total payment for tickets (not applicable to current members). Tickets from Vicki Jones, CPA, Frenchay. Cheques payable to UWE Bristol. Telephone 0117 32 82067 or e-mail [cpa@uwe.ac.uk](mailto:cpa@uwe.ac.uk) to check availability.



University of the West of England



# Undergraduate Open Day

see for yourself 2006  
Open Day  
Saturday 25 November,  
10.00 – 16.00

Register **online**  
[www.uwe.ac.uk](http://www.uwe.ac.uk)

For further information please contact  
**0117 32 83333**

Open Days, Admissions and International Recruitment, Bristol UWE,  
Frenchay Campus, Coldharbour Lane, Bristol, BS16 1QY  
E-mail [open@uwe.ac.uk](mailto:open@uwe.ac.uk)

*Start here, go anywhere*

## Staff ads

### Skilled plumber and kitchen/ bathroom fitter

Experienced, reliable and reasonable rates. Full range of kitchens and bathrooms designed, including all appliances, tiling, worktops and flooring. Call or e-mail for brochures: [RHT@vanos.freeseve.co.uk](mailto:RHT@vanos.freeseve.co.uk) telephone 07974 769801 or 01454 312535. Low call out charge includes first hour of labour for emergency plumbing.

**Tree Surgeon** available for work in Bristol, Bath and surrounding areas. Fully insured, fully qualified, reliable and experienced. Please contact Brian at Fielding Tree Services by calling 07796 637450, or e-mail [bri\\_fielding@hotmail.com](mailto:bri_fielding@hotmail.com)

**Single room** in modern house, located in Stoke Park, Frenchay, very close to UWE. All creature comforts included; W/M, TD, FF, TV, Microwave, etc. Sharing with one professional, would suit lecturer / postgrad. Rent £250 (inclusive all bills). Phone Kevin 07803 791368, e-mail [kevin.parle@lloydstsb.co.uk](mailto:kevin.parle@lloydstsb.co.uk)

**House share:** brand new house in Wootton-Under-Edge (17 miles from Frenchay Campus). En suite bedroom. All mod cons. £450 per month inclusive of all bills other than telephone. Contact Stephen Migdal (Law Faculty) [sd-migdal@uwe.ac.uk](mailto:sd-migdal@uwe.ac.uk); 0117 32 82540 (work) 01453 842411 (home) or 07917 766363 (mobile).

**Freelance Research Support** - experienced and reliable help with your research including transcription service and data entry, at very reasonable prices. Please call Claire on 01929 421212 or email [cbam2000@hotmail.com](mailto:cbam2000@hotmail.com) to discuss your needs.

**New Years Eve in St Ives,** Cornwall - Join the splendid New Years Eve celebrations in St Ives, Cornwall, by staying in Premier One, Premier Apartments, a luxury flat overlooking the harbour in the heart of the town. Flat sleeps six (two double bedrooms and double studio couch for two in the lounge), has sea views, balcony, kitchen (with electric cooker, washer/dryer, refrigerator, iron, toaster, microwave, vacuum cleaner, cutlery), lounge (with TV, Digi-box and DVD player) and WC and bath/shower room. Available 30 December to 6 January 2007. Total cost £535. Parking space available for the week at £15. Call

Claire or Charles on 01929 421212 or e-mail [cbam2000@hotmail.com](mailto:cbam2000@hotmail.com) for further information.

**Room for rent** in Stoke Park. Five minutes walk from Frenchay Campus, large modern house, exclusive bathroom, new appliances, share kitchen and living room. £350pcm inclusive of bills and cleaning. Contact 0117 9586066 or [dimitriscc@hotmail.com](mailto:dimitriscc@hotmail.com).

**Beachside apartment** to let - Broad Haven, Pembrokeshire. Third Floor, two bed roomed, penthouse apartment with fabulous views of St Bride's Bay. Double bedroom, second bedroom with bunks, double sofa-bed in lounge, bathroom with shower, TV/DVD/CD player, fridge, freezer, washer/dryer, microwave, cooker/hob. No smoking/pets. Children welcome. See [www.stbridesbayview.com](http://www.stbridesbayview.com) Tel: Denise on 0787 9897714.

**Spain:** Beautiful spacious detached villa to let for summer or winter holidays in Beznar, Lecrin Valley, Andalucia. Peaceful village location, private pool, garden and stunning views. Ideally located for Granada (30mins), Sierra Nevada Skiing (1hr), coast (25min) and Las Alpujarras hills. Sleeps 6/8, three Bedrooms, air-con, heating. From £325 per week. Contact [Clare.Rowson@uwe.ac.uk](mailto:Clare.Rowson@uwe.ac.uk) for further details.

**Room to let:** Large furnished room to let in Cotham in a family house close to Whiteladies Road. Room has access to its own shower and a family bathroom. Good bus routes to UWE nearby. Would suit non-smoking female. £250pcm including bills except telephone. If interested contact Sandra Tomkins [Sandra.Tomkins@uwe.ac.uk](mailto:Sandra.Tomkins@uwe.ac.uk) or on extension 83151.

**3-bed unfurnished detached house** for rental from December 2006: Fitted kitchen, lounge, dining room, conservatory, downstairs toilet, utility and cloakroom, fitted master bedroom with en-suite shower room, new bathroom. Enclosed South East facing low maintenance garden and attached garage. Space for two cars on front driveway. Well decorated throughout with white goods including dishwasher. Rental £850 pcm. Mobile: 07801 977317 [bev.wake@yellgroup.com](mailto:bev.wake@yellgroup.com).



University of the West of England

Centre for Performing Arts

Saturday 9 December 2006, 19.30  
Bristol Cathedral,  
College Green, Bristol BS1 5TJ

An evening of  
French music

UWE Singers and Symphony Orchestra  
Conducted by Martin Fieke

Saint-Saens  
Third Symphony  
(Organ)

Organ: Alison Howell

Poulenc  
Gloria

Soprano: Helen Court  
and works by Fauré and Ravel

Tickets: £10, £8, £6, £5 (concessions available), Quid-a-kid (under 16 with paying adult)

From: MusicBox tel: 01275 349010  
For details of all CPA productions,  
Telephone: 0117 32 82067  
E-mail: [cpa@uwe.ac.uk](mailto:cpa@uwe.ac.uk)  
[www.uwe.ac.uk/cpa](http://www.uwe.ac.uk/cpa)



## UWE Graduation ceremonies

For details please see [www.uwe.ac.uk/info/gradcerem.shtml](http://www.uwe.ac.uk/info/gradcerem.shtml) or page 13

## Integrated Environmental Monitoring

Date: 1 November 2006 (13.30-14.30)  
Nick Holden, Environment Agency  
Venue: Room 1L1, Frenchay Campus

Contact: Rebecca Williams  
E-mail: [rebecca.williams@uwe.ac.uk](mailto:rebecca.williams@uwe.ac.uk)  
Visit: [www.uwe.ac.uk/fas/research](http://www.uwe.ac.uk/fas/research)

## English National Ballet presents

**Alice in Wonderland**  
Date: 2 November 2006 (19.30)  
Venue: Hippodrome, Bristol

Tickets: £33 (stalls normally £38)  
Contact: Centre for Performing Arts  
Tel: 0117 32 82067 E-mail: [cpa@uwe.ac.uk](mailto:cpa@uwe.ac.uk)  
Visit: [www.uwe.ac.uk/cpa](http://www.uwe.ac.uk/cpa)

## 154 Autumn Exhibition

Date: 5 November 2006 - 16 December 2006  
(Mon-Sat 10.00-17.30; Sun 14.00-17.00)  
Venue: Royal West of England Academy,  
Queen's Road, Clifton, Bristol BS8 1PX

Admission: Adults £3, concs £2, children free  
Contact: Royal West of England Academy  
Tel: 0117 973 5129 E-mail: [info@rwa.org.uk](mailto:info@rwa.org.uk)  
Visit: [www.rwa.org.uk](http://www.rwa.org.uk)

## Advanced Grinding Principles

Date: 7 - 9 November 2006 (08.45-17.00)  
Institute of Grinding Technology, CEMS  
Venue: Frenchay Campus

Cost: £675 members (£900 non-members)  
Contact: Business Liaison Office  
Tel: 0117 32 83132  
E-mail: [cems.placements@uwe.ac.uk](mailto:cems.placements@uwe.ac.uk)  
Visit: [www.uwe.ac.uk/cems/research/centres/amrc/igt/training.html](http://www.uwe.ac.uk/cems/research/centres/amrc/igt/training.html)

## Situations Lecture: Brigitte Franzen, Curator of Sculpture projects Munster 2007

Date: 7 November 2006 (18.00-19.30)  
Venue: Arnolfini, Bristol BS1 AQA

Admission: £3 (£2 Concessions)  
Contact: Claire Doherty  
Tel: 0117 32 81459  
E-mail: [info@situations.org.uk](mailto:info@situations.org.uk)  
Visit: [www.situations.org.uk](http://www.situations.org.uk)

## Geography Research Unit and Centre for Leisure, Tourism and Society Seminar Series

Date: 8 November 2006 (15.00)  
Lance Morrisey and Paul Rae, UWE  
Venue: tbc

Contact: Jane Newton Tel: 0117 32 83102  
E-mail: [jane.newton@uwe.ac.uk](mailto:jane.newton@uwe.ac.uk)

## The Rediscovery of the British Druids in Early Modern England

Date: 8 November 2006 (17.30)  
Ronald Hutton, University of Bristol  
Venue: St Matthias Campus (tba)

Contact: Dr Lene Petersen  
Tel: 0117 32 84457  
E-mail: [lene.petersen@uwe.ac.uk](mailto:lene.petersen@uwe.ac.uk)  
Visit: [www.uwe.ac.uk/hlss/faculty/news.shtml](http://www.uwe.ac.uk/hlss/faculty/news.shtml)

## Why examine children's vision? Clinical and epidemiological studies

Date: 10 November 2006 (09.30-11.00)  
Venue: Hampton House, Cotham Hill, Bristol

Contact: Diana Hynam Tel: 0117 331 0893  
E-mail: [D.Hynam@bristol.ac.uk](mailto:D.Hynam@bristol.ac.uk)  
Visit: [hsc.uwe.ac.uk/hsc/newsevents.asp](http://hsc.uwe.ac.uk/hsc/newsevents.asp)

## Remembrance Reflection

Date: 10 November 2006 (11.00)  
Venue: Main Reception, Frenchay Campus  
Contact: UWE Chaplaincy Tel: 0117 32 82334  
E-mail: [chaplaincy@uwe.ac.uk](mailto:chaplaincy@uwe.ac.uk)  
Visit: [www.uwe.ac.uk/chaplaincy](http://www.uwe.ac.uk/chaplaincy)

## UWE Big Band in concert

Date: 13 November 2006 (19.00)  
Venue: Street Parish Church, Somerset

Admission: £5 (£3 concs) on the door only  
Contact: CPA Tel: 0117 32 82067  
E-mail: [cpa@uwe.ac.uk](mailto:cpa@uwe.ac.uk)  
Visit: [www.uwe.ac.uk/cpa](http://www.uwe.ac.uk/cpa)

## Analysing Machining Processes

Date: 14 November - 15 November 2006  
(08.45-16.30)  
Venue: Frenchay Campus

Admission: £300 - available to SMEs only  
Contact: Business Liaison Office  
Tel: 0117 32 83132  
E-mail: [cems.placements@uwe.ac.uk](mailto:cems.placements@uwe.ac.uk)  
Visit: [www.uwe.ac.uk/cems/research/centres/amrc/ramp.html](http://www.uwe.ac.uk/cems/research/centres/amrc/ramp.html)

## Geography Research Unit and Centre for Leisure, Tourism and Society Seminar Series

Date: 15 November 2006 (15.00)  
Professor Ken Fox (Bristol) and  
Dr Lindsey Kilgour (Gloucestershire)  
Venue: tbc

Contact: Jane Newton Tel: 0117 32 83102  
E-mail: [jane.newton@uwe.ac.uk](mailto:jane.newton@uwe.ac.uk)

## Inaugural Professorial Lecture: The Romantic poets and higher education

Date: 16 November 2006 (18.30)  
Professor Robin Jarvis  
Venue: Chapel Lecture Theatre, St Matthias

Contact: Rose West Tel: 0117 32 84372  
E-mail: [rose.west@uwe.ac.uk](mailto:rose.west@uwe.ac.uk)  
Visit: [www.uwe.ac.uk/hlss/faculty/news.shtml](http://www.uwe.ac.uk/hlss/faculty/news.shtml)

## The Vicar of Wakefield

Date: 16 - 25 November 2006 (19.30 with  
14.00 matinees on 18, 23, 35 Nov)  
Venue: Old Vic Studio, Bristol BS1 4ED

Admission: Tickets £10 (£7 concessions)  
Contact: Bristol Old Vic Box Office  
Tel: 0117 987 7877  
Visit: [www.bristol-old-vic.co.uk](http://www.bristol-old-vic.co.uk)

## Welsh National Opera - La Bohème

Date: 17 November 2006 (19.15)  
Venue: Bristol Hippodrome

Admission: £21 (Grand Circle - normally £29)  
Contact: CPA Tel: 0117 32 82067  
E-mail: [cpa@uwe.ac.uk](mailto:cpa@uwe.ac.uk)  
Visit: [www.uwe.ac.uk/cpa](http://www.uwe.ac.uk/cpa)

## Young People and Alcohol

Date: 17 November 2006 (8.15 onwards)  
UWE/Alcohol & Health Research Trust  
Venue: Watershed Media Centre, Bristol

Admission: Registration fee £105  
Contact: Jan Green Tel: 0117 32 88800  
E-mail: [Jan.Green@uwe.ac.uk](mailto:Jan.Green@uwe.ac.uk)

## UWE Big Band in concert

Date: 18 November 2006 (19.30)  
Venue: St Mary's Church, Yatton  
In aid of St Mary's Church (Yatton) and  
KABWE in Zambia

Admission: Tickets £5 (£4 concs) from  
St Mary's Church or on the door  
Contact: CPA Tel: 0117 32 82067  
E-mail: [cpa@uwe.ac.uk](mailto:cpa@uwe.ac.uk)  
Visit: [www.uwe.ac.uk/cpa](http://www.uwe.ac.uk/cpa)

## Analysing Grinding Processes - 2 Day Course for SMEs

Date: 21 - 22 November 2006 (8.45-16.30)  
Faculty of Computing, Engineering and  
Mathematical Sciences (CEMS)  
Venue: Frenchay Campus, UWE

Admission: £300 - for SMEs only  
Contact: Business Liaison Office  
Tel: 0117 32 83132  
E-mail: [cems.placements@uwe.ac.uk](mailto:cems.placements@uwe.ac.uk)  
Visit: [www.uwe.ac.uk/cems/research/centres/amrc/igt/training.html](http://www.uwe.ac.uk/cems/research/centres/amrc/igt/training.html)

## Geography Research Unit and Centre for Leisure, Tourism and Society Seminar Series

Date: 22 November 2006 (15.00)  
Dr Simon Arlidge and Sally Everett, UWE  
Venue: tbc

Contact: Jane Newton Tel: 0117 32 83102  
E-mail: [jane.newton@uwe.ac.uk](mailto:jane.newton@uwe.ac.uk)

## Bristolians in Late Medieval Ireland

Date: 22 November 2006 (17.30)  
Tim Bowlly, UWE  
Venue: St Matthias Campus (tba)

Contact: Dr Lene Petersen  
Tel: 0117 32 84457  
E-mail: [lene.petersen@uwe.ac.uk](mailto:lene.petersen@uwe.ac.uk)  
Visit: [www.uwe.ac.uk/hlss/faculty/news.shtml](http://www.uwe.ac.uk/hlss/faculty/news.shtml)

## Consulting with children and young people - necessary, valid?

Date: 24 November 2006 (09.30-11.00)  
Venue: Hampton House, Cotham Hill, Bristol

Contact: Diana Hynam Tel: 0117 331 0893  
E-mail: [D.Hynam@bristol.ac.uk](mailto:D.Hynam@bristol.ac.uk)  
Visit: [hsc.uwe.ac.uk/hsc/newsevents.asp](http://hsc.uwe.ac.uk/hsc/newsevents.asp)

## Undergraduate Open Day

Date: 25 November 2006 (10.00-16.00)  
Venue: All campuses

Contact: Admissions and International  
Recruitment  
Tel: 0117 32 83333 Email: [open@uwe.ac.uk](mailto:open@uwe.ac.uk)  
Visit: [www.uwe.ac.uk/aboutUWE/openday](http://www.uwe.ac.uk/aboutUWE/openday)

## Alopecia and Identity (tbc)

Date: 29 November 2006 (13.30-14.30)  
Dr Sue McHale and Dr Nigel Hunt

Venue: Room 1L1, Frenchay Campus  
Contact: Rebecca Williams  
E-mail: [rebecca.williams@uwe.ac.uk](mailto:rebecca.williams@uwe.ac.uk)  
Visit: [www.uwe.ac.uk/fas/research](http://www.uwe.ac.uk/fas/research)

## Geography Research Unit and Centre for Leisure, Tourism and Society Seminar Series

Date: 29 November 2006 (15.00)  
Dr Charles Booth, BBS, UWE  
Venue: tbc

Contact: Jane Newton Tel: 0117 32 83102  
E-mail: [jane.newton@uwe.ac.uk](mailto:jane.newton@uwe.ac.uk)

## Genocidal Rape: Breaking the Silence

Date: 29 November 2006 (19.00)  
Professor Debra Bergoffen  
Venue: Glendinning Theatre (Room 2D67),  
Frenchay

Admission: FREE but reservations necessary  
Contact: Rose West Tel: 0117 32 84372  
E-mail: [rose.west@uwe.ac.uk](mailto:rose.west@uwe.ac.uk)

## UWE Big Band in concert

Date: 2 December 2006 (19.30)  
Venue: Llanishen High School, Cardiff

Admission: tbc Contact: CPA  
Tel: 0117 32 82067 E-mail: [cpa@uwe.ac.uk](mailto:cpa@uwe.ac.uk)  
Visit: [www.uwe.ac.uk/cpa](http://www.uwe.ac.uk/cpa)