

Process Maps As Is – Course Management UWE

This document describes the processes of course recording and market courses as presently used in the University of the West of England. It also describes the change management process of courses.

The course approval process is added for an overall view of the processes involved in course management, but was not part of the XCRI project. Only the link between the course approval and course registration was under investigation.

JISC XCRI project UWE

Version 2.0, Change input Student Recruitment Managers

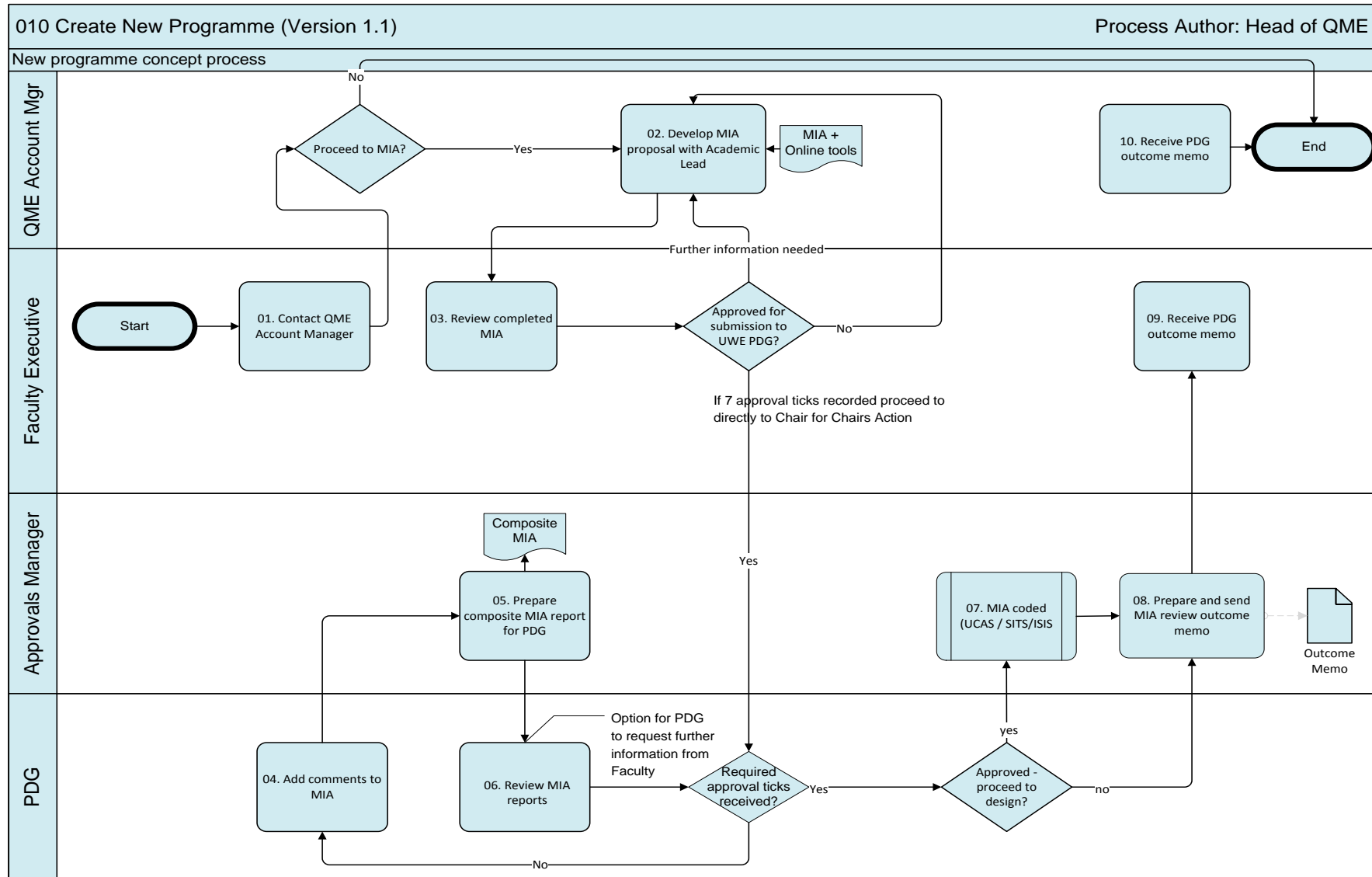
Date: December 2012

Contents

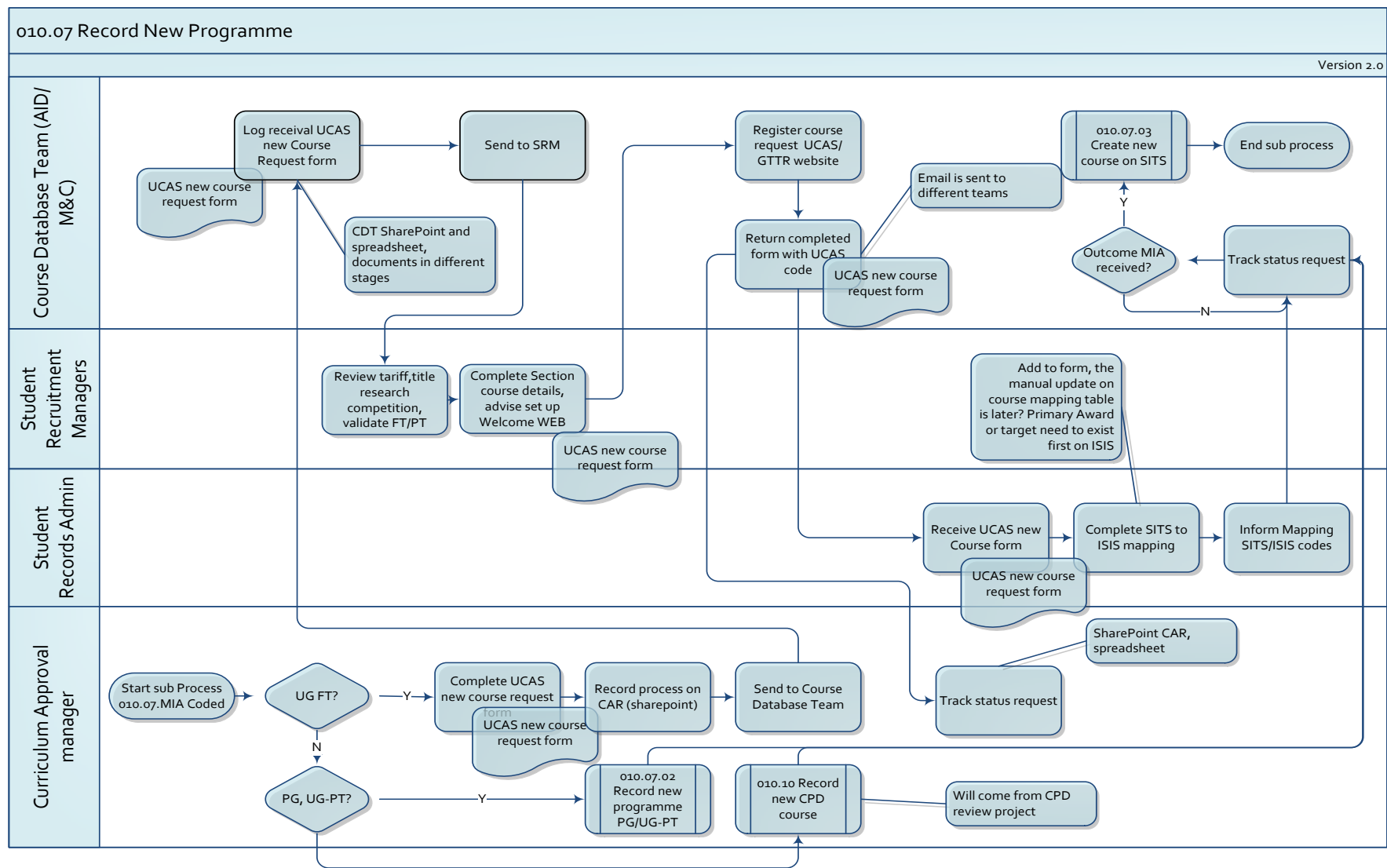
Process Maps As Is – Course Management UWE	1
New Programme/New Professional course.....	3
Create New Programme	4
Record New Federation programme	7
New CPD course Departments.....	8
Record course on SITS.....	9
Update and publish Marketing information	10
Update external sites	11
Design new programme.....	12
Approve New programme	13
Publish approved courses	14
Change programmes.....	15
Periodic Review of Curriculum.....	16
Change programme	17
Change and update Courses on SITS.....	18
Change CPD courses.....	19
Suspend or discontinue Programme.....	20
Roll over Publication Lifecycle Courses.....	21

New Programme/New Professional course

Create New Programme

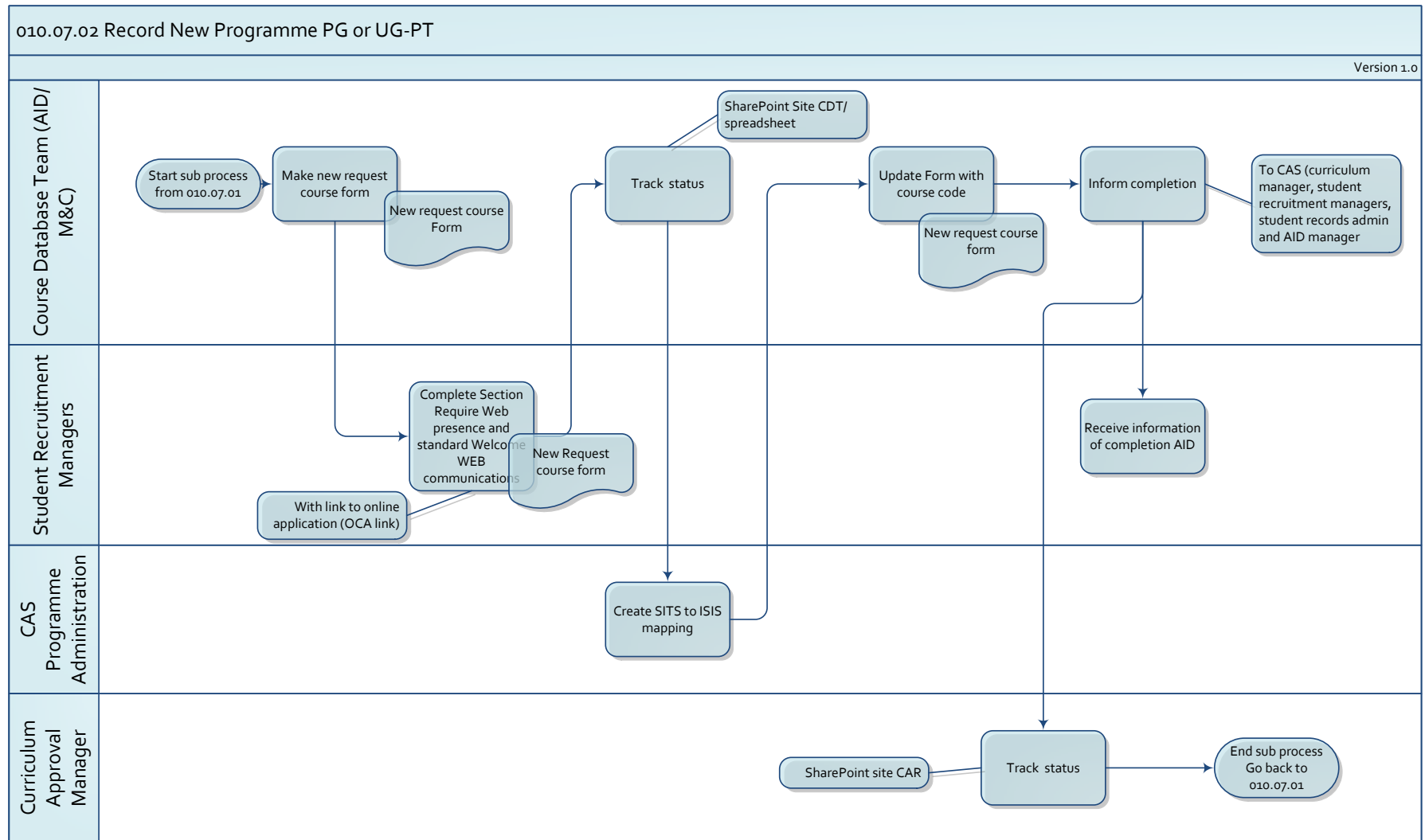


Record New Programme

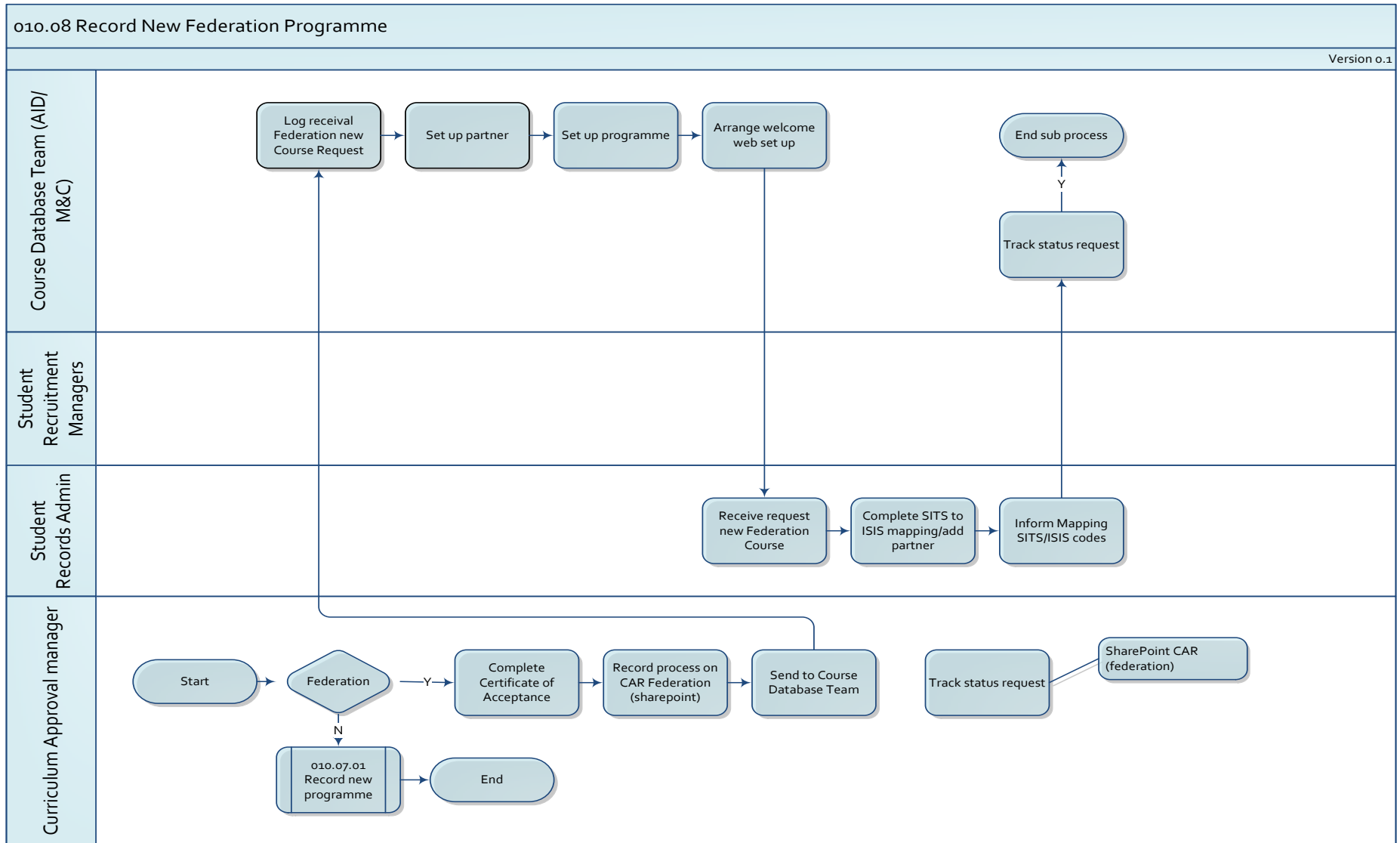


Record

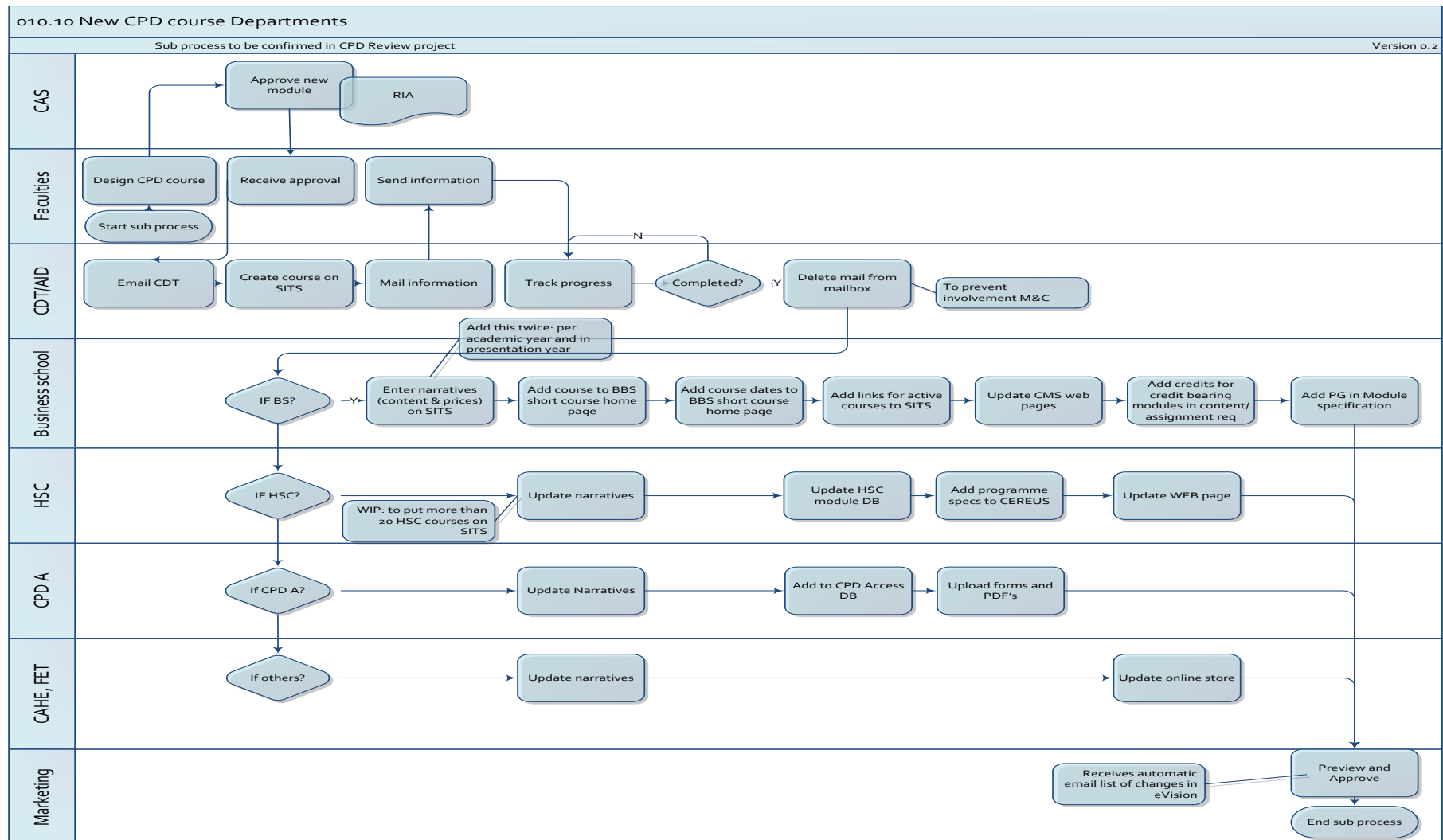
New Programme PG or UG-PT



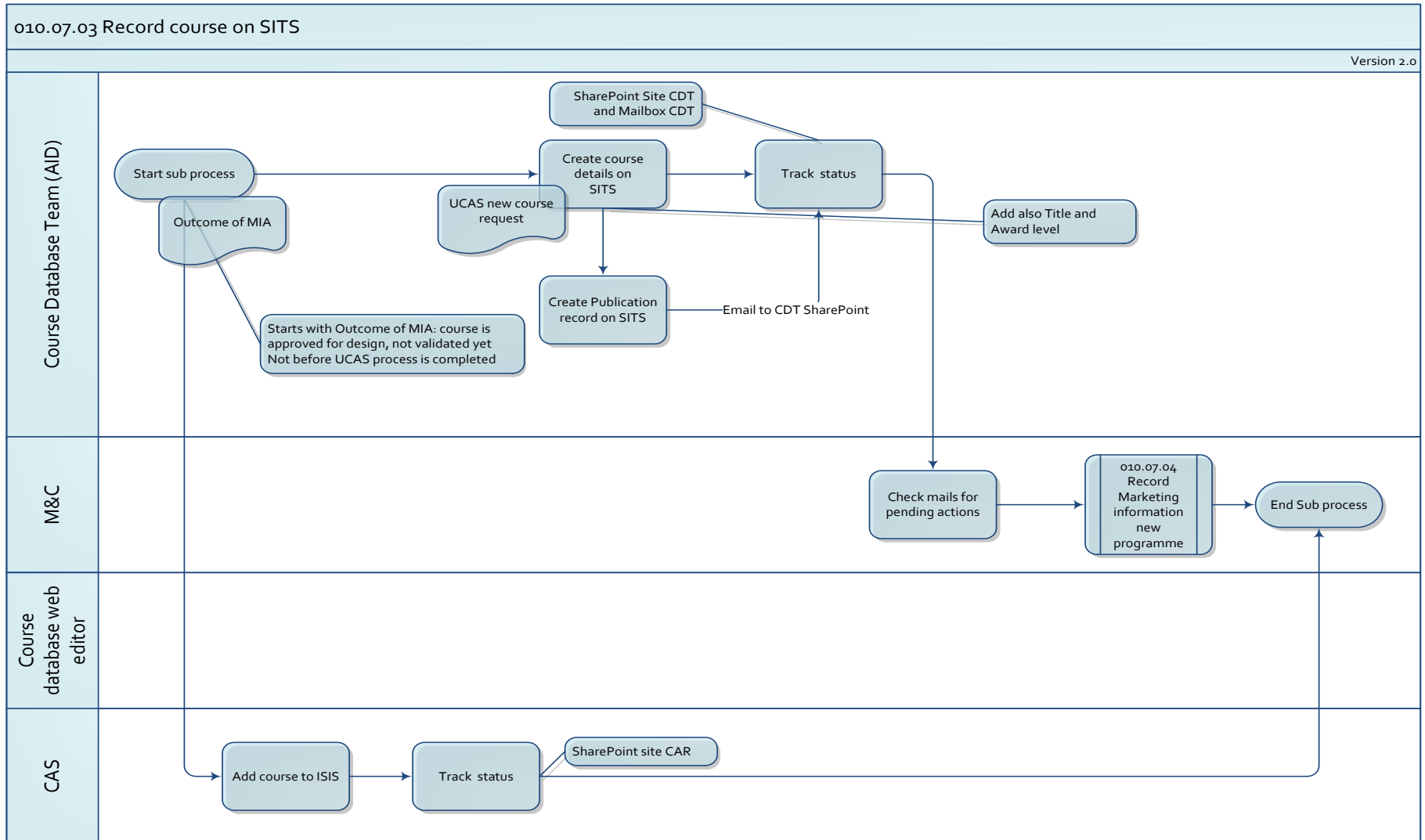
Record New Federation programme



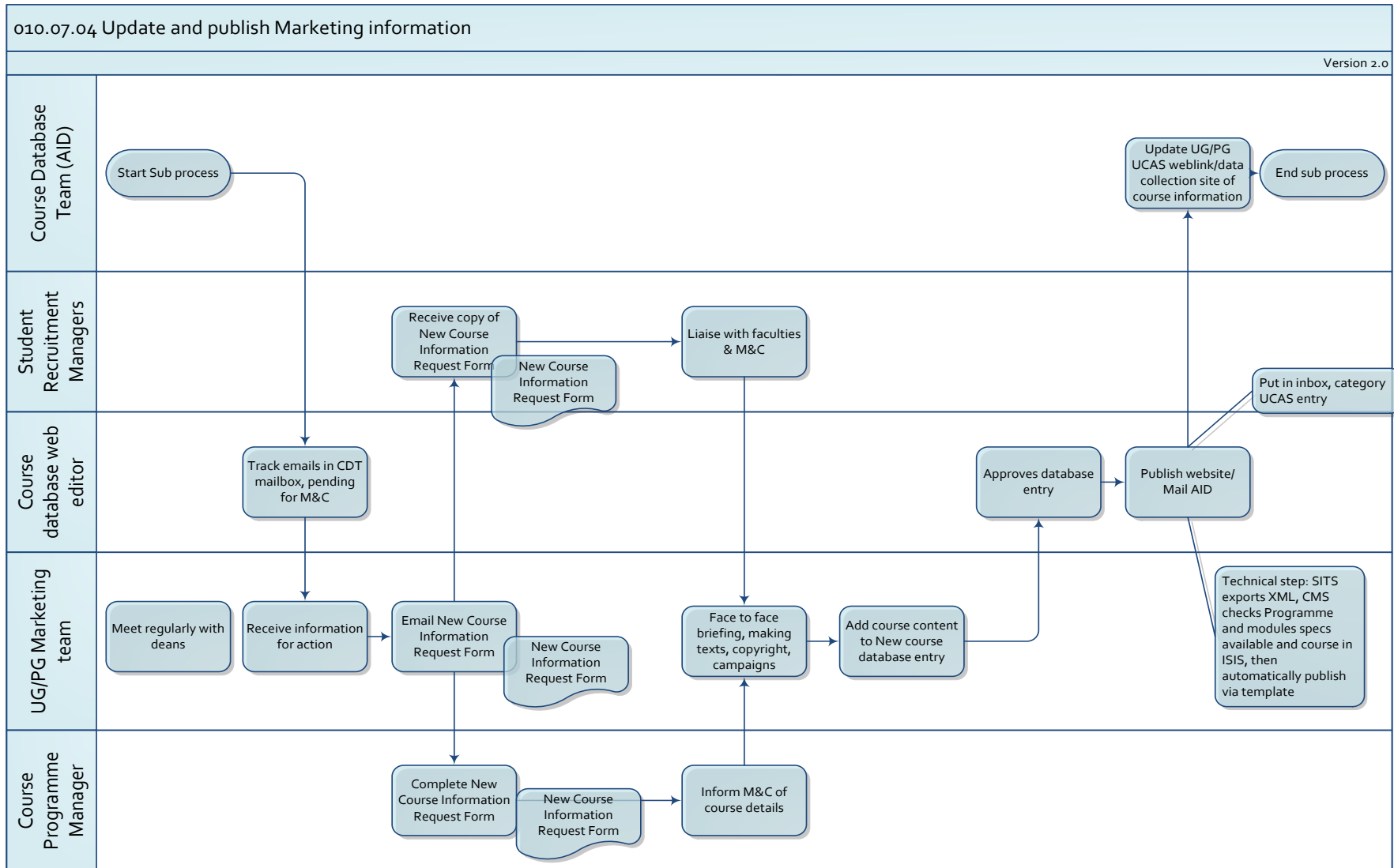
New CPD course Departments



Record course on SITS



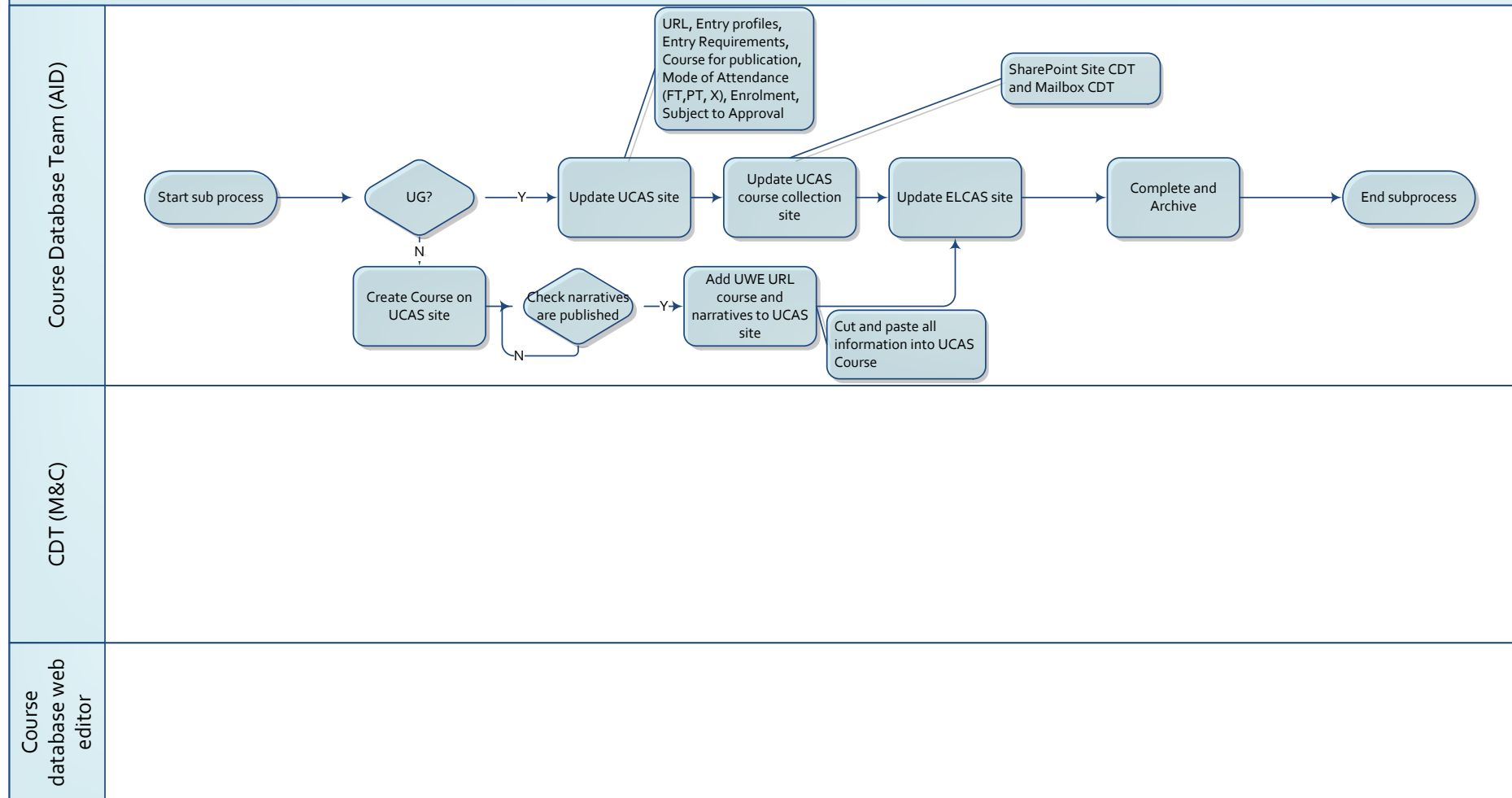
Update and publish Marketing information



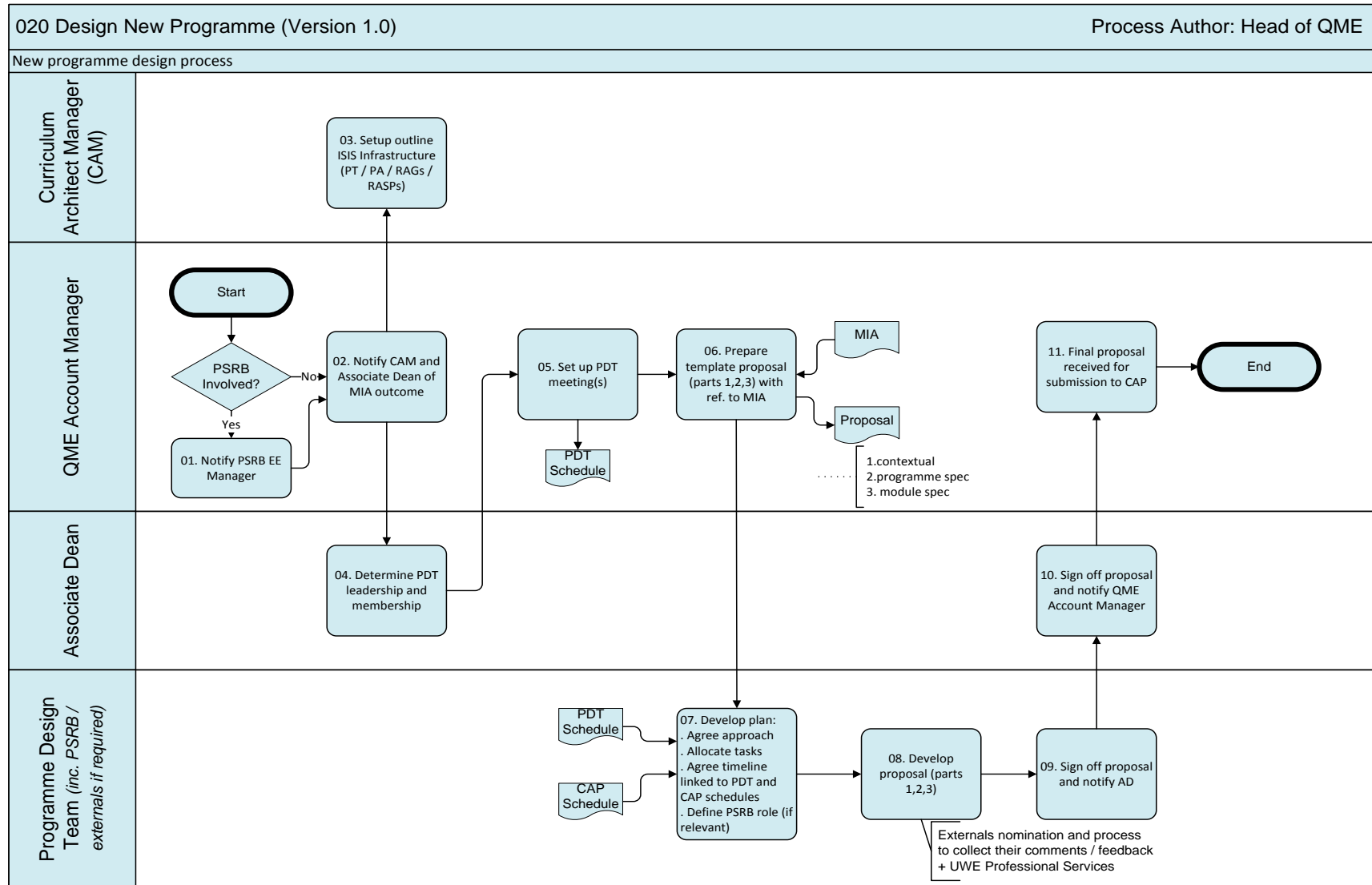
Update external sites

030.11.04 Update External Sites

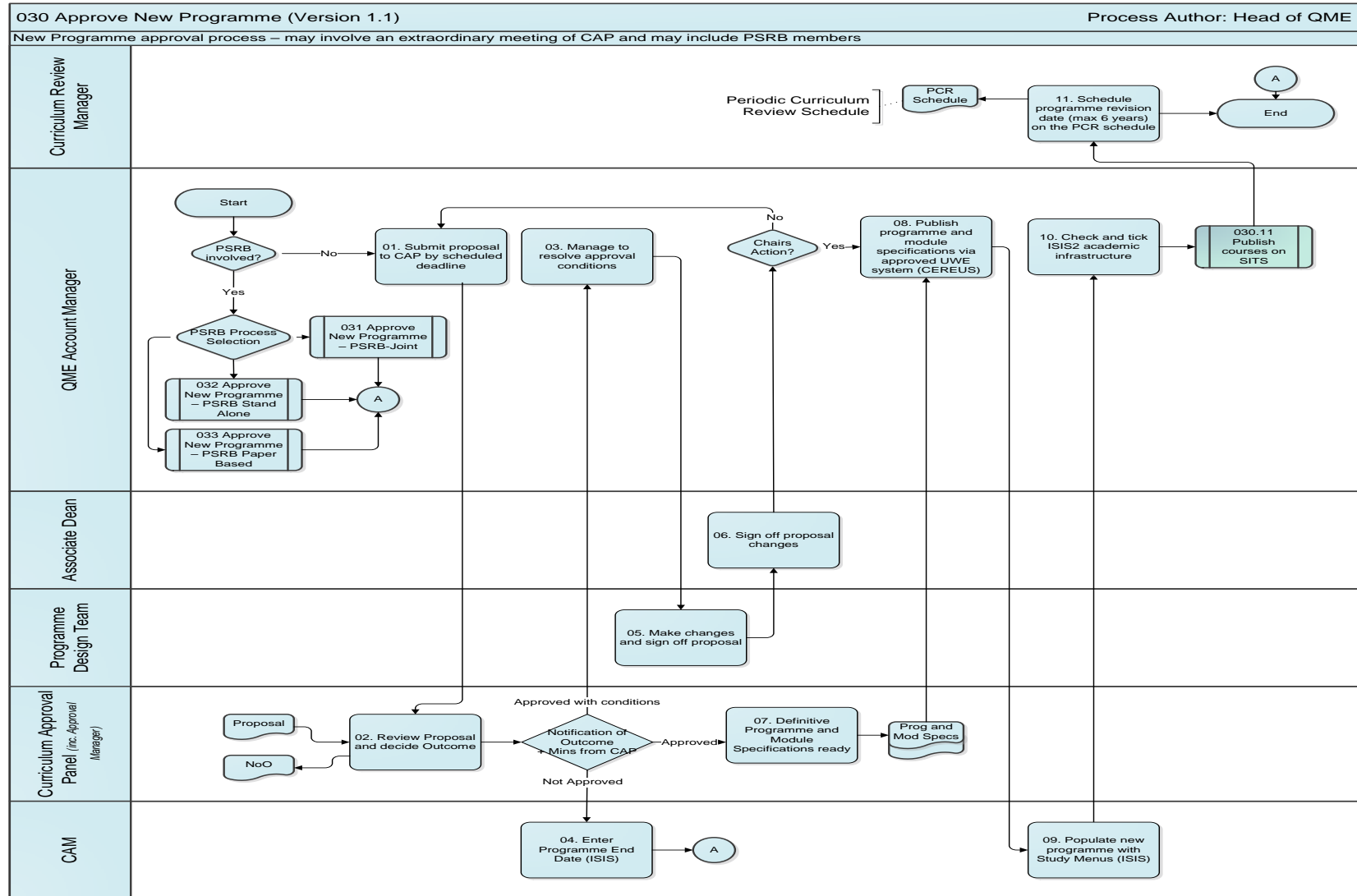
Version 2.0



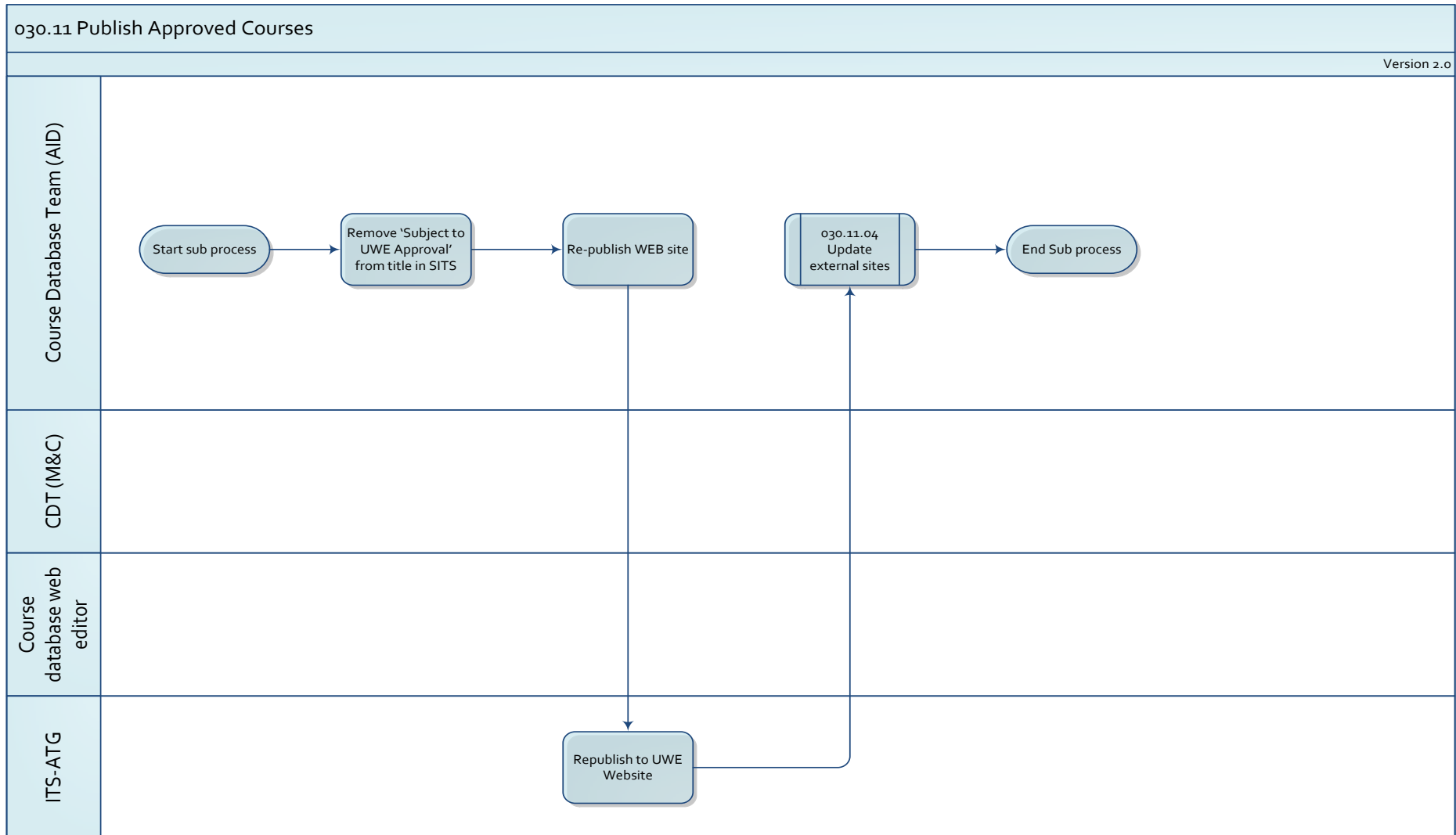
Design new programme



Approve New programme

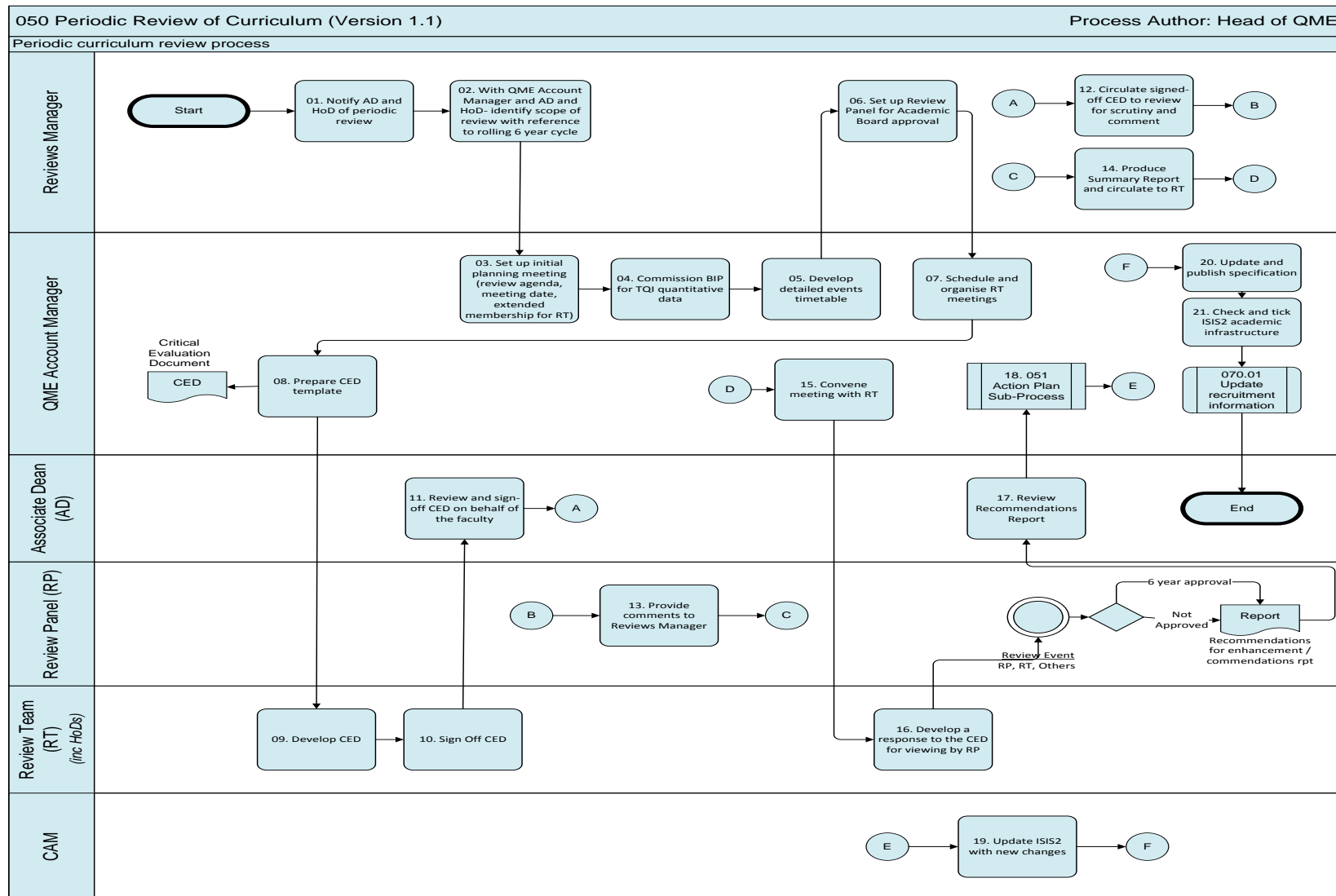


Publish approved courses

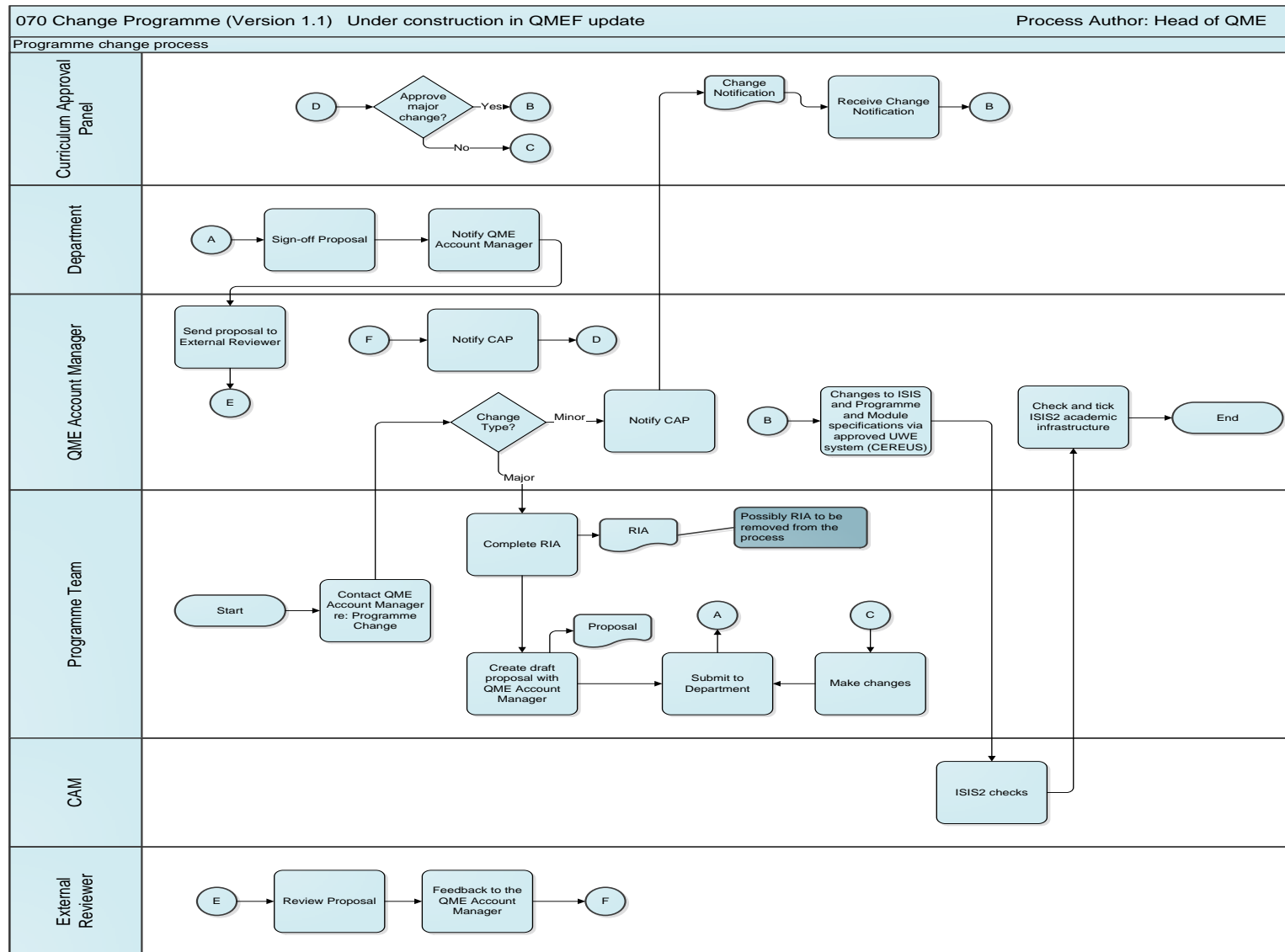


Change programmes

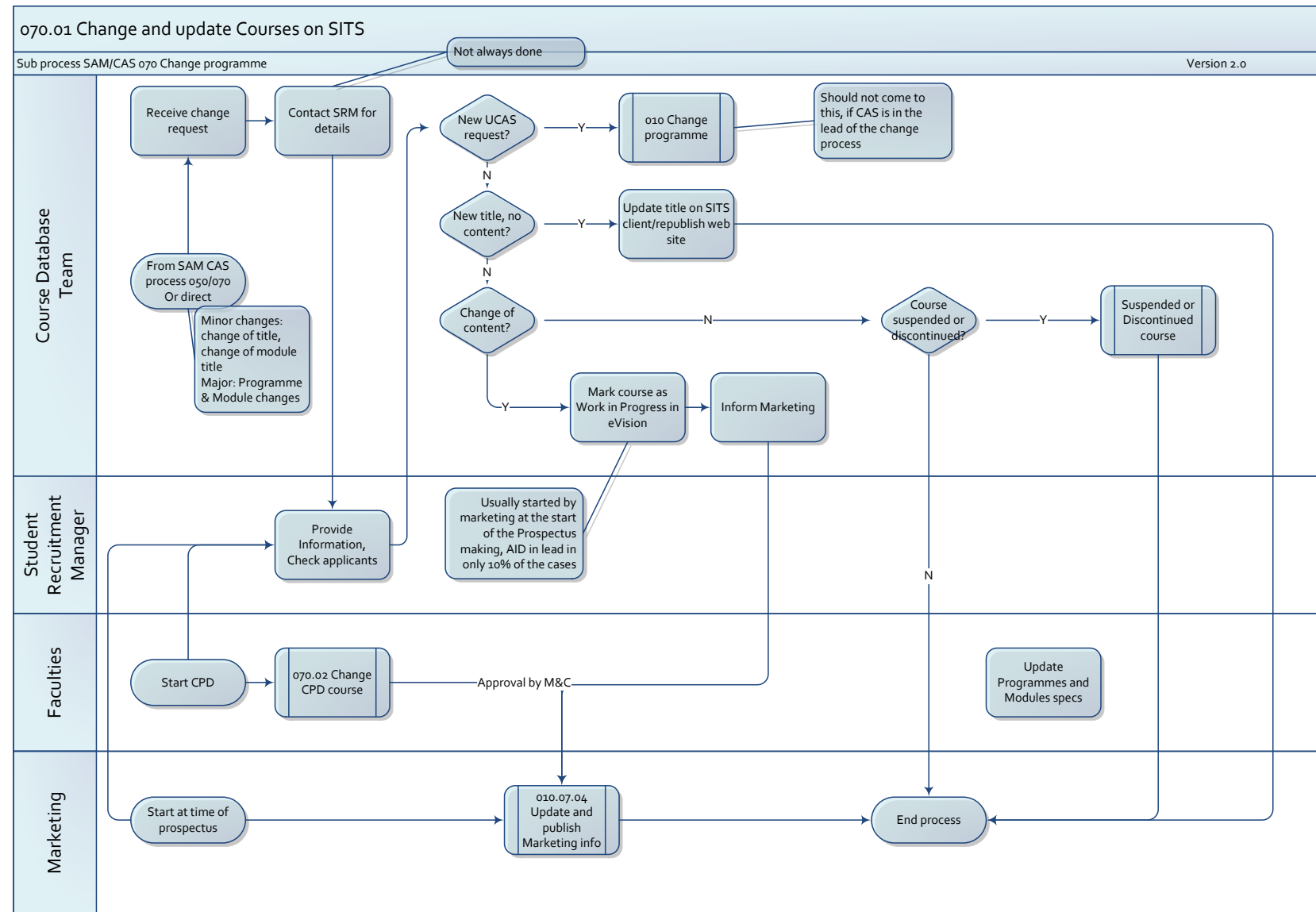
Periodic Review of Curriculum



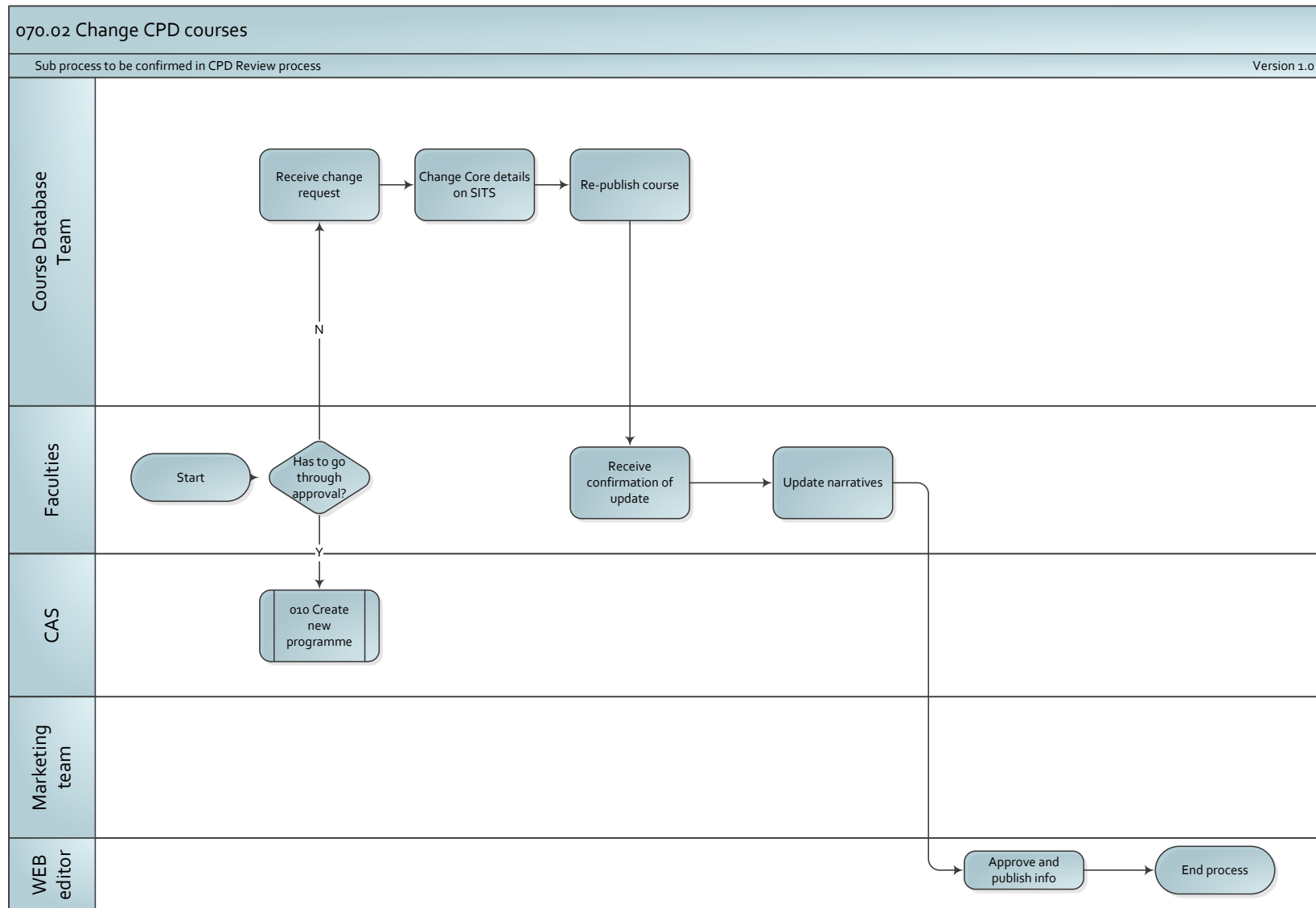
Change programme



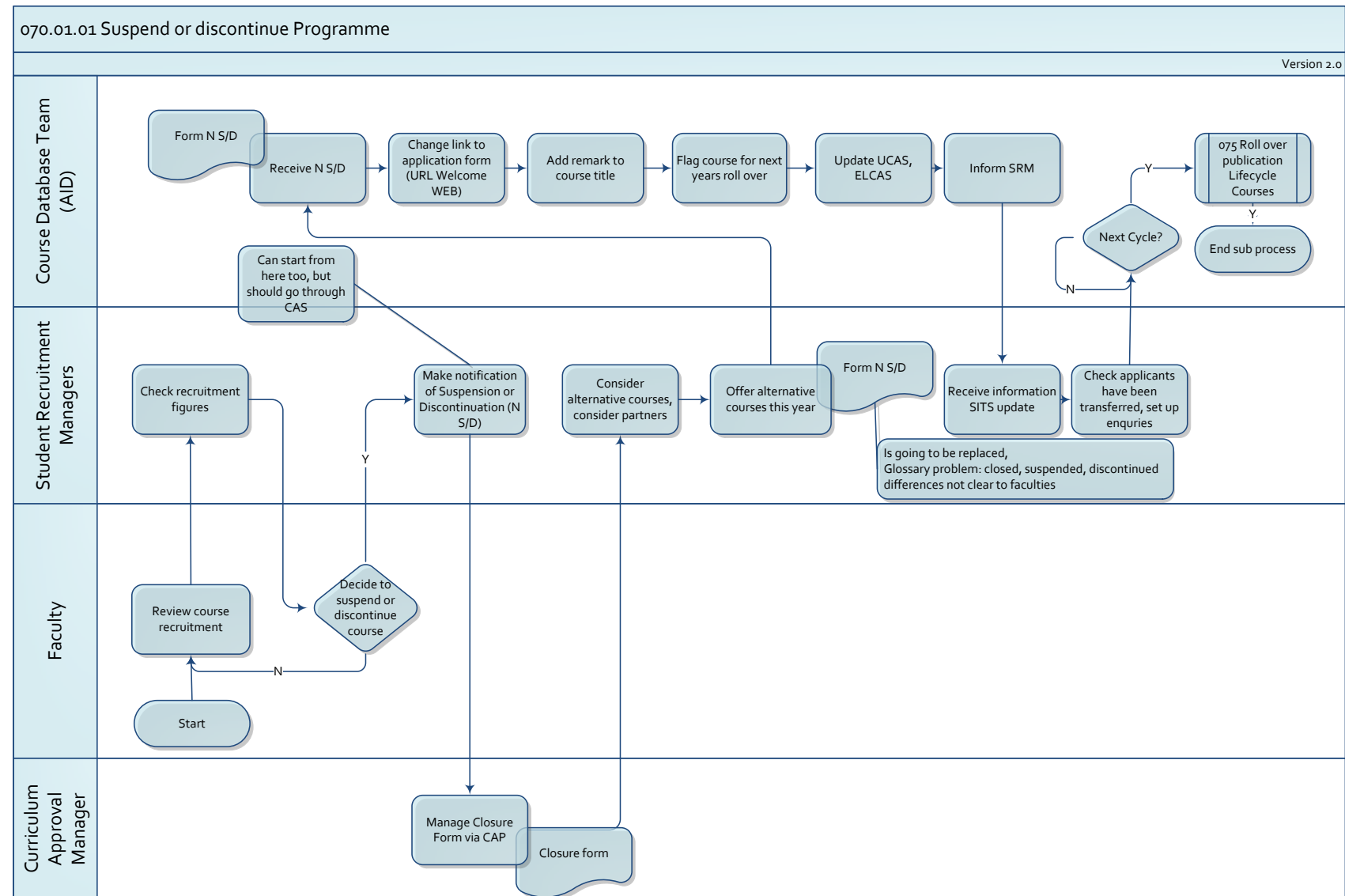
Change and update Courses on SITS



Change CPD courses



Suspend or discontinue Programme



Roll over Publication Lifecycle Courses

