

# Two Decades of Registration and Notification Laws: *What has the U.S. learned?*

ESRC Knowledge Exchange

Roxanne Lieb

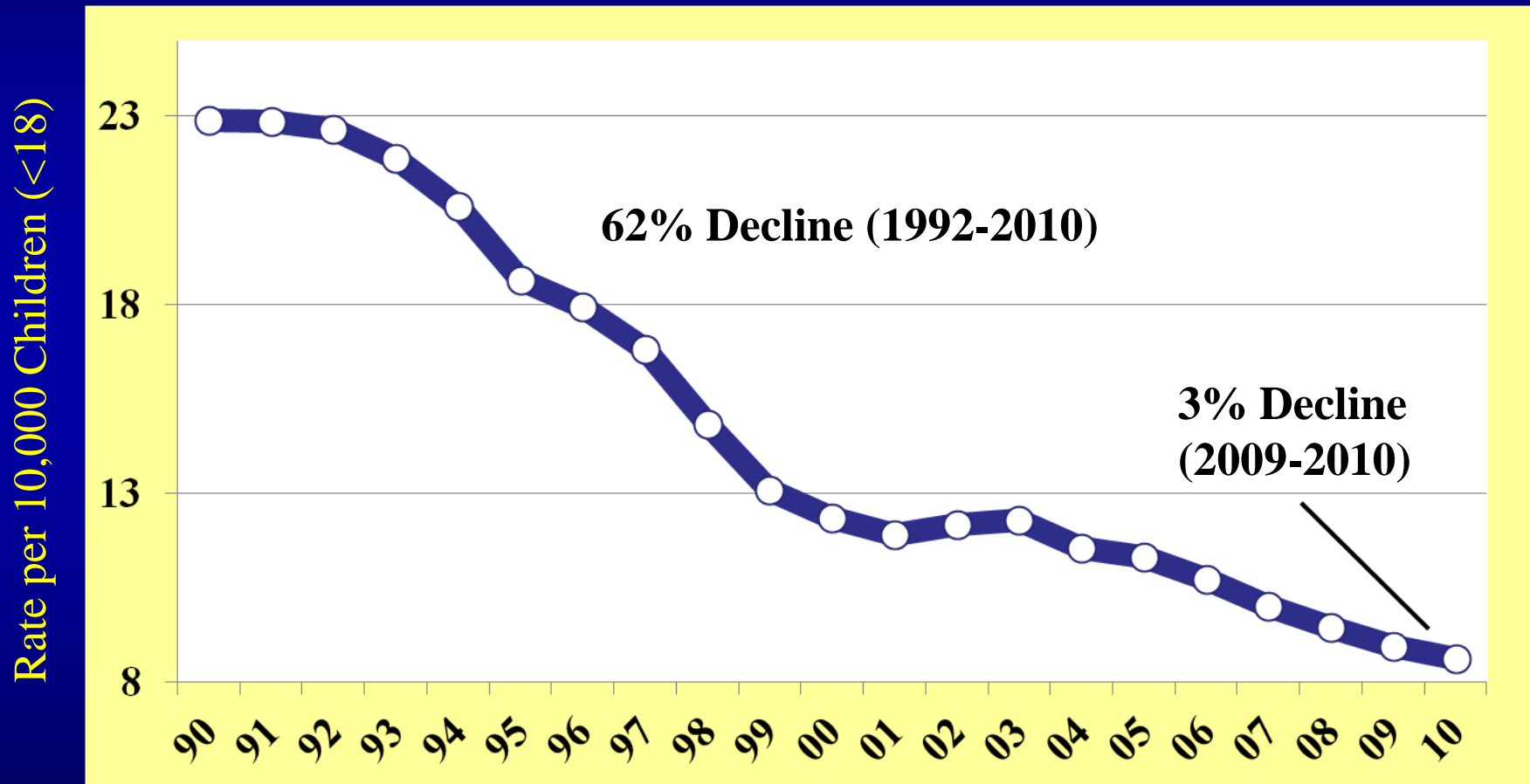
November, 2012

Washington State Institute  
for Public Policy  
[liebr@wsipp.wa.gov](mailto:liebr@wsipp.wa.gov)  
[www.wsipp.wa.gov](http://www.wsipp.wa.gov)

# Outline

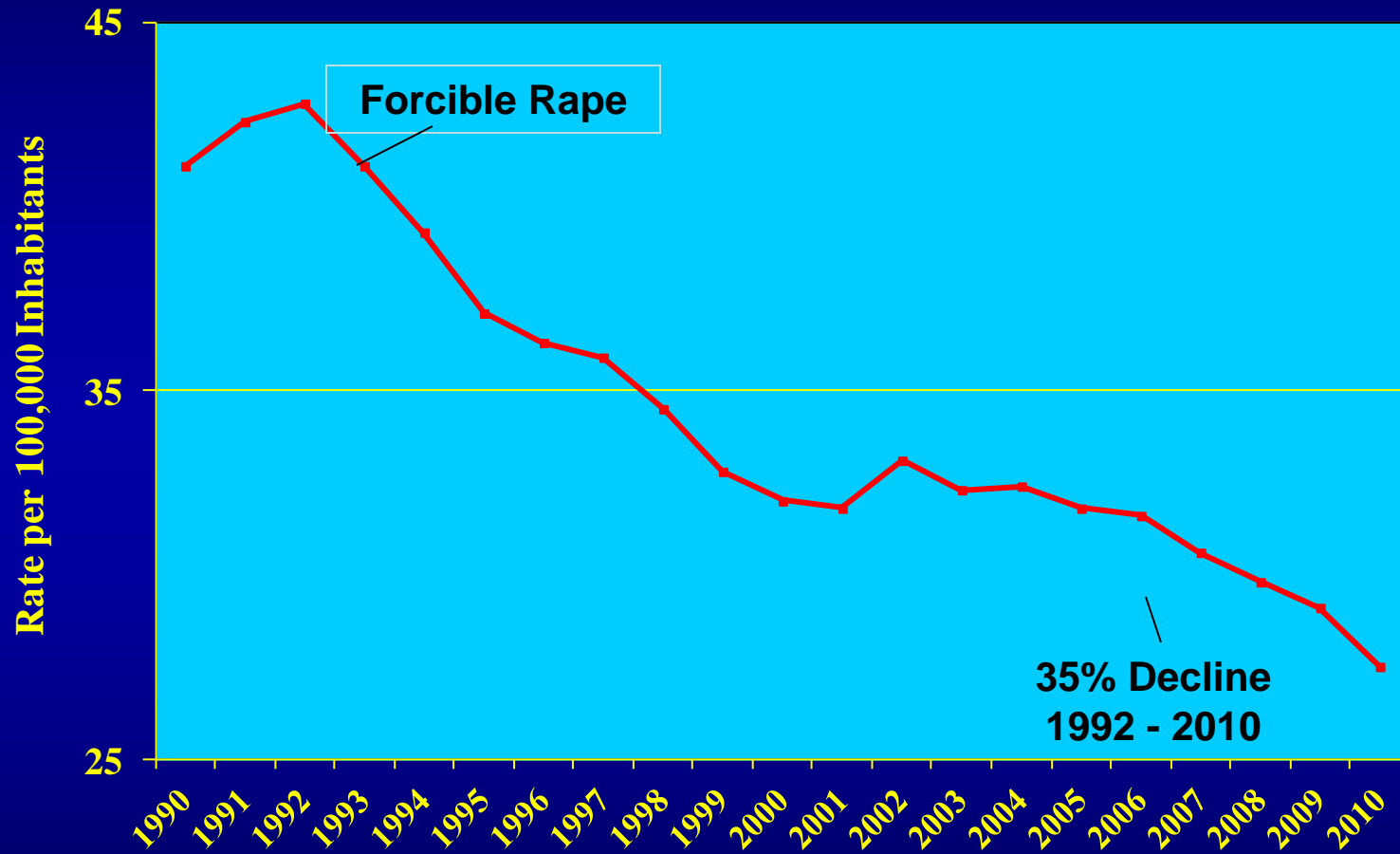
- Context: What is known about relevant crime patterns?
- Research Evidence
- Collateral consequences
- Perspectives and comparisons

# National Estimate Child Sexual Abuse (1990 – 2010)



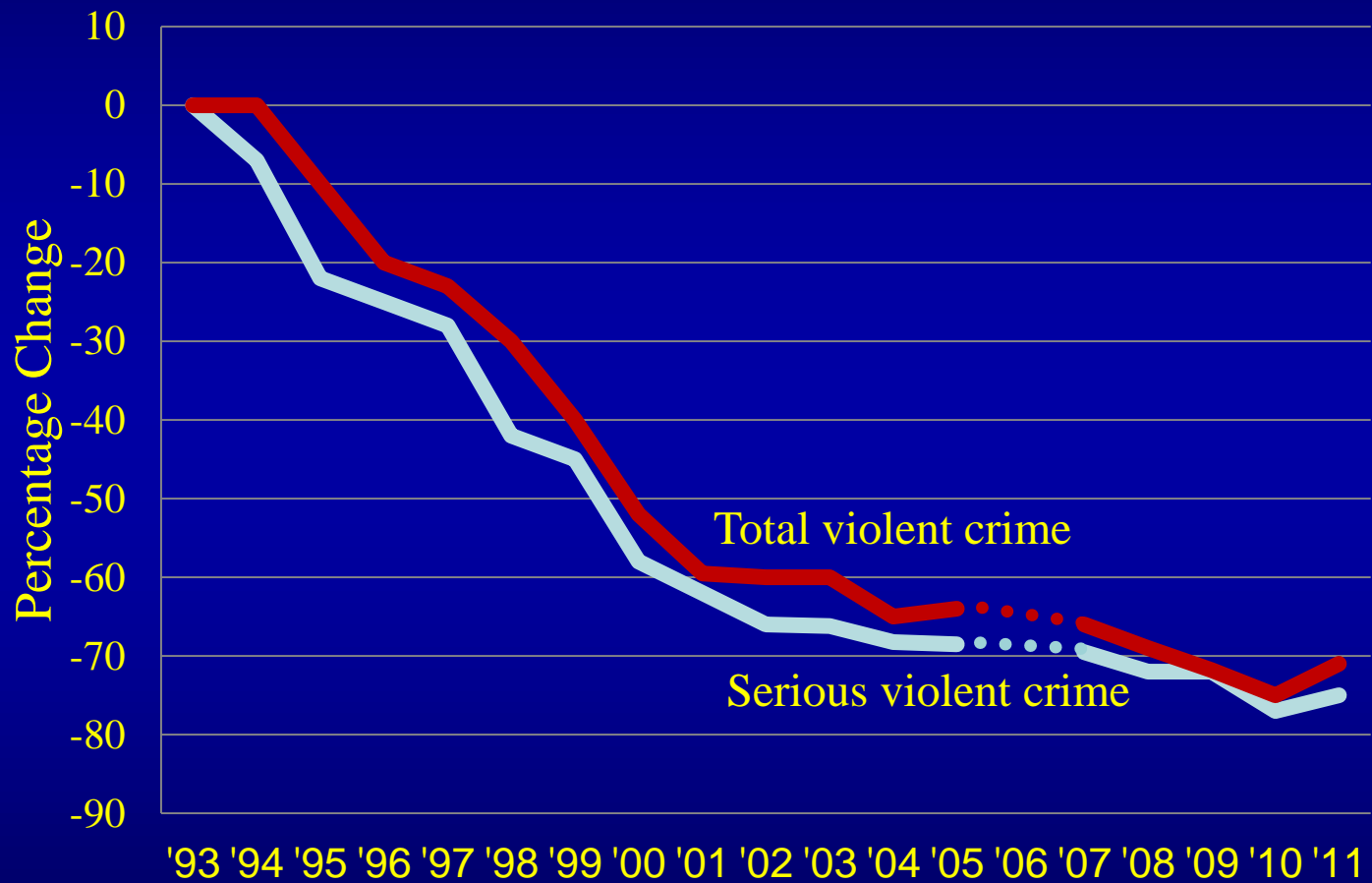
Source: National Child Abuse and Neglect Data System

# FBI Forcible Rape 1990-2010



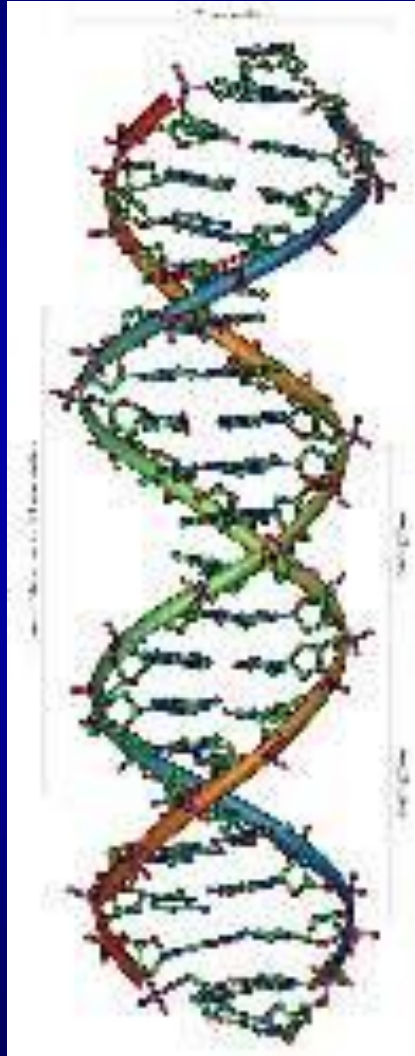
\*Source: FBI, Crime in the United States Reports

# Percentage Change Rate of Violent Victimization Since 1993





# Pawson's Theorem



# Big picture summary

“We do not know whether, or to what degree, the laws assist police, deter recidivism, and empower communities with information to self-protect.”

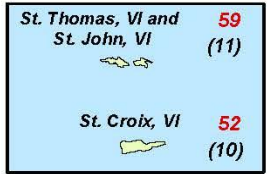
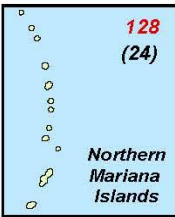
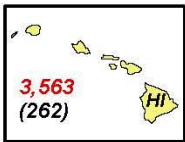
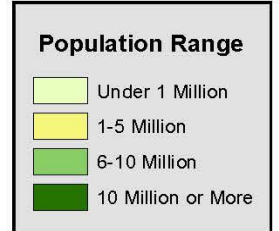
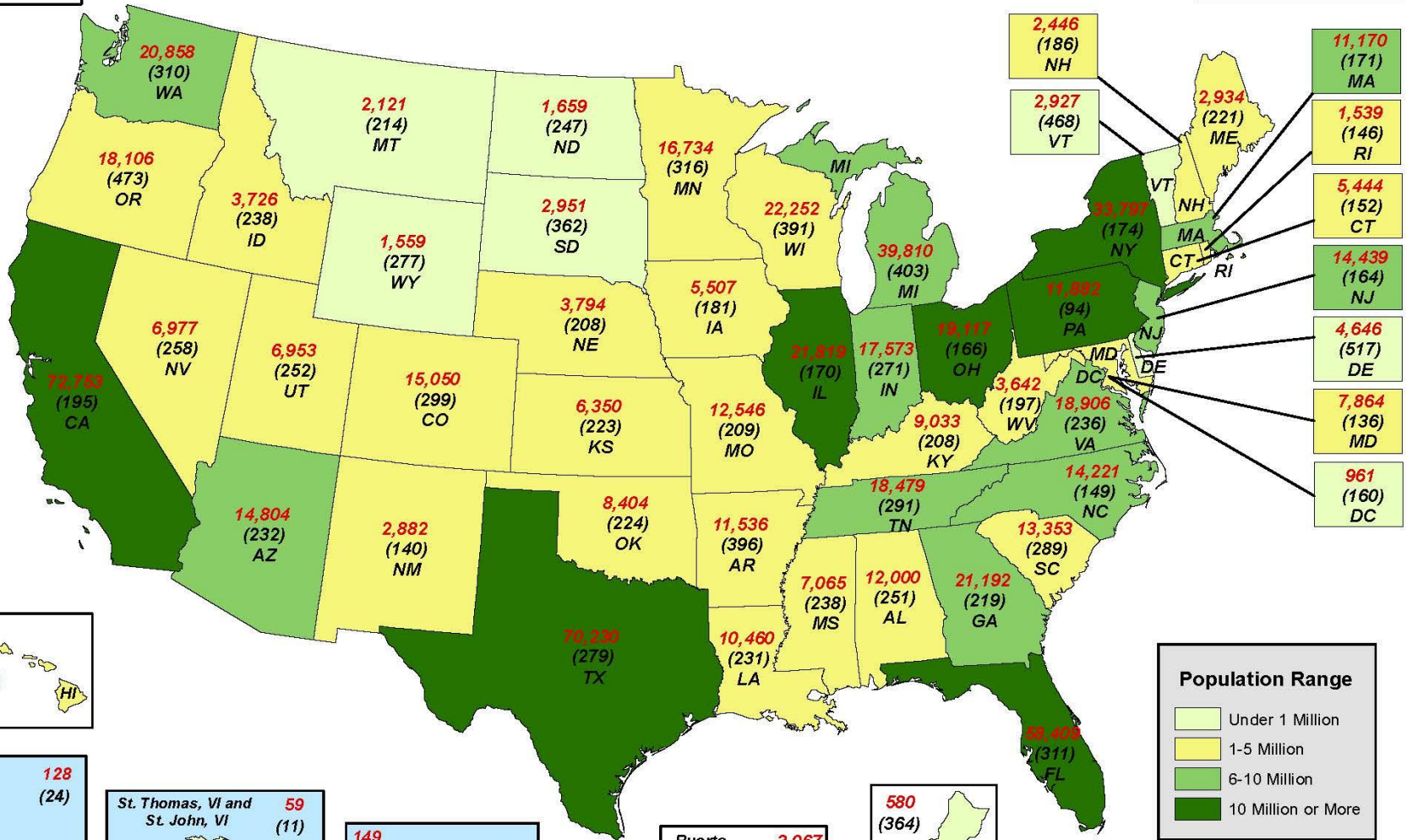
– Wayne Logan, 2011





# REGISTERED SEX OFFENDERS IN THE UNITED STATES AND ITS TERRITORIES PER 100,000 POPULATION

**Total - 722,499 (Per 100,000 Population - 231)**



Prepared by the Special Analysis Unit, July 11, 2012  
National Center for Missing & Exploited Children (NCMEC)  
RSO Data: State or Territory Sex Offender Registries  
Population Range: 2010 U.S. Census Bureau  
Mapping Software Donated to NCMEC by ESRI

Territories with Population Rates per 10,000 (American Samoa, N. Mariana & Virgin Islands)

# Affect on crime

- Single state studies:
- Multiple state studies, more sophisticated methods:

# What's Different for citizens?



# US Criminal Justice Policy: Redrawing some boundaries

