

**Please note:** This is a copy of the e-mail. There will be minor spacing/layout issues that have arisen from the content being copied into Word. These aren't in the final newsletter – this is intended as a guide for your information.

Exam adjustments, grants for your projects and SU updates

Send to a friend | View in a browser



myUWE

Support

Infopoints



## Take care of yourself

The weather's getting colder and there's only a month left of term! You're probably busy with your assignments, but if you haven't already it's a good idea to register with a doctor so you can get medical care if you need it. Don't wait until you're ill!

If you're based at Frenchay Campus, we have a health centre on site - you can [register online](#). If you're at City Campus, Glenside or Gloucester search [NHS choices](#) to find the surgery nearest to you.

And remember, our [students' page](#) has all the information you need while you're here. If you've got a question, you'll find the answer there - or ask an [Information Point](#).

### Quick links

- » [January exam adjustments](#)
- » [Who are your Student Reps?](#)
- » [Your Academic Survival Guide](#)
- » [Student shops on campus](#)
- » [Christmas card competition](#)
- » [Grants for your projects](#)

## Reasonable adjustments for January exams

If you're entitled to exam adjustments (e.g. extra time), check the [myUWE](#) Personal Details tab to confirm they're in place.

If your adjustments aren't showing, please make an appointment with the Disability Service (via an Information Point) by **Friday 2 December** so that we can get things sorted in time for your January exams.

Make an appointment with the Disability Service

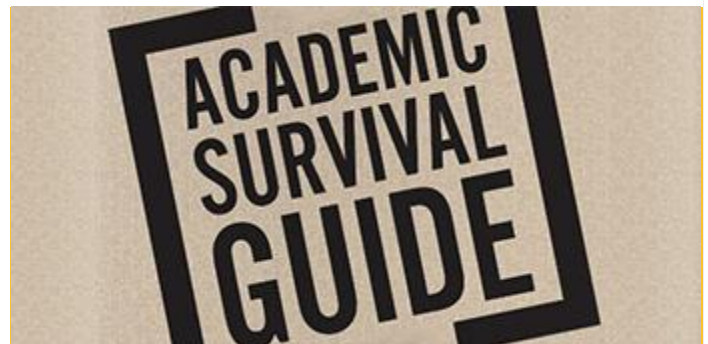


### Find out who your Student Reps are

[Student Reps](#) represent your voice. You can talk to them about problems with your course and they'll work with academic and support staff to improve things.

You can now find out who your Student Reps are via myUWE - go to the Courses tab, then Student Reps. If there's a \* next to their name, it means you share a module with them.

Go to myUWE



### Your Academic Survival Guide

The academic regulations and procedures are a set of rules that govern all areas of your studies.

They're here to make sure you're all treated fairly - but we know they can be hard to understand.

We've put together an Academic Survival Guide to help you make sense of them.

Read the guide

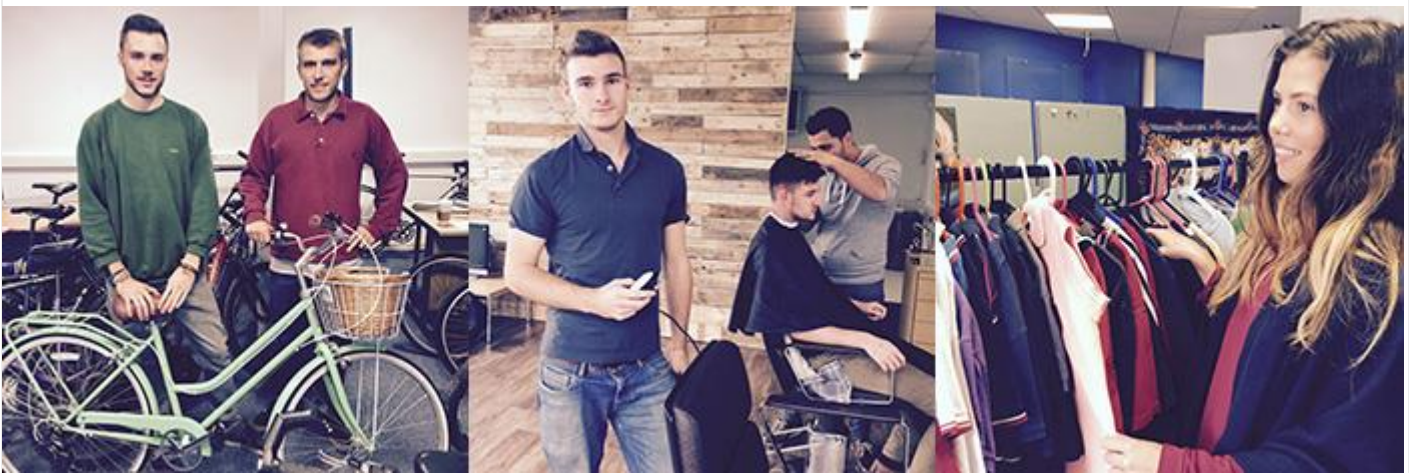
## Want to be your own boss?

Join in with Global Entrepreneurship Week from Monday 14 November - Friday 18 November.

We'll be running workshops and networking events to help you develop the skills and knowledge you'll need to start your own business.

You can also keep up to date with our Apprentice Challenge by checking #UWEApprentice.

See all Global Entrepreneurship Week events



## Support our student entrepreneurs

Three student businesses have just opened their doors on Frenchay Campus! Find them on F Block patio, outside Onezone. They'll be open until the end of term, so come along and show your support!

### [Green Wheels](#)

Get your bike fixed and pick up accessories from James, Robbie and Colin, studying BA(Hons) Team Entrepreneurship at Frenchay.

### [Campus Cuts Barber Shop](#)

Get your hair cut by Joel and the team, studying BA(Hons) Team Entrepreneurship at Frenchay.

### [Euony Vintage](#)

Buy some retro clothes from Tess and her team, studying BA(Hons) Film Making and Creative Media at Bower Ashton.

Find out more about the shops

## Who's registered to vote in your house?

Bristol City Council have sent a letter to every house in Bristol to tell you who's currently registered to vote at that property. You need to check the information and update it with your name (if it's not already on there).

**Each house must reply to the form** to say they've checked it - even if the details haven't changed. It's a legal requirement and you could be fined if you don't reply. They'll be visiting properties where the form hasn't been returned.

If all of the details are correct, you can reply quickly online, by phone or by text.

[Find out more](#)

## One day left - design our Christmas card

You've only got one day left to submit your design for the official UWE Bristol Christmas card!

If you win you'll receive a £300 prize, and the four runners up will win £50 each. Get your entries in by **23:00 on Friday 11 November**.

Vote for your favourite on the [UWE Bristol Facebook page](#) between Wednesday 16 November - Sunday 20 November.

[Find out how to enter](#)

## Caring in Bristol - we need box wrappers!

Can you spare an hour or two to help us wrap and deliver Christmas donation boxes on Frenchay Campus? We'll provide the materials (and the mince pies!) – all we need is your time and enthusiasm.

It's all part of the Caring in Bristol campaign, providing support and accommodation for homeless people in Bristol over Christmas.

You can use any time spent volunteering towards your [UWE Bristol Futures Award](#).

[Find out when the sessions are](#)

## Grants to enhance your experience

You can apply for a grant to support academic or extra-curricular activities.

There's no limit to how much money you can apply for, but your project must enhance the experience for a large number of students.

Applications are accepted all year-round.

[Apply for a grant](#)

## Grants to help the community

Grants of up to £3,000 are available to help you set up new volunteering projects in the local community.

We're particularly interested in projects that support schools and education, sustainability or tackling inequality.

Apply by Friday 2 December.

[Apply for a grant](#)

THE STUDENTS'  
UNION  
AT IIFE

[News](#) [What's on](#)

## MISSING YOUR PET? COME TO THE STUDENTS' UNION!



Come and spend some time with dogs on **Monday 21 November** at The Students' Union, Frenchay Campus.

Canine Generated Independence is a not-for-profit organisation. They'll be bringing their dogs to raise money and awareness about assistance dogs and all that they do. De-stress, relax with the dogs and learn about their work!

Tickets will be on sale from The Students' Union reception.

**JAMIE JORDON**  
VP Education



**SIÂN HAMPSON**  
VP Community  
and Welfare



## WHAT IS THE HE BILL? WHAT'S GOING ON?

For the first time in over a decade the Government has decided to introduce a HE Bill which will change the landscape of Higher Education. Some of these changes include the 'Office for Students' and the 'Teaching Excellence Framework'.

I've written a blog with my thoughts about what's happening.

[Read my blog](#)

## REPRESENTING YOU IN ACCOMMODATION

One of my manifesto pledges was to set up a Halls Rep system this year - of course these systems take time and there is a lot of groundwork to be done.

We've been out and about talking to you about what you like and don't like about UWE Bristol accommodation - read about the work we've done so far.

[Read my blog](#)

## BY-ELECTION AND NUS CONFERENCE RESULTS

1497 votes were cast to elect your new officers and 412 votes were cast to elect your new NUS conference delegates - thanks to everyone who voted! Find out who won online.

## SHOULD THE UK CONTINUE WITH THE PREVENT AGENDA?

Malia Bouattia (NUS President) and Adam Deen (Managing Director of Quilliam) will visit The Students' Union on **Monday 14**

Check the results

**November** to debate whether the UK should continue with the Prevent Agenda.

Register to attend

## Quick links

- » myUWE
- » Academic advice
- » Study support
- » Term dates

## Contact us

Information Points

Email: [infopoint@uwe.ac.uk](mailto:infopoint@uwe.ac.uk)

Tel: +44 (0)117 32 85678

[More contact options](#)

Registered address | University of the West of England, Frenchay Campus,  
Coldharbour Lane, Bristol BS16 1QY

### Dynamic content

#### Faculty of Business and Law:

## The Managing Director of Harrods visits UWE Bristol



Why is luxury relevant to the UK economy? Hear Michael Ward discuss this and the barriers faced by developing countries on **Wednesday 16 November**, Frenchay Campus.

It's all part of our [Bristol Distinguished Address Series](#), which brings senior business leaders to UWE Bristol.

The talk is free and all students are welcome.

Register for this event

## Your new building is coming along quite nicely...

With just under two months to go until the Bristol Business School - home of the Faculty of Business and Law - opens, above are some of the latest images of the building as it nears completion.

The building will house all business and law students and will provide innovative teaching spaces for you.

### **Glenside:**

## Reminder: parking on Glenside Campus

Please remember that you can only park on Glenside Campus if you have a valid car parking permit. Make sure you're only parking in university car parks - please don't park at the Riverside Unit.

[Car parking guidance for students](#)

## THE STUDENTS' UNION AT GLENSIDE OPEN UNTIL 23:00 IN NOVEMBER

You told us that you'd like The Students' Union at Glenside to be open later – so we're trialling later opening times during November and February.

We'll be running different activities every evening – including films, quizzes, Pilates, yoga, glow games, comedy nights, curry club and pool competitions.

We'd like to be able to extend the opening times permanently - but we need to make this trial a success! Come along, get involved and let us know what you think.

[See the full list of events at Glenside](#)

### **Faculty of Health and Applied Sciences:**

## Extenuating Circumstances deadline for Health and Applied Sciences November exam boards



If you need to submit an Extenuating Circumstances application for an assessment that's going to the November exam boards, you must submit your application by **14:00 on Friday 18 November**.

If you're unsure about anything to do with the Extenuating Circumstances process, contact an [Information Point](#) before applying.

Find out how to apply

**City Campus:**

## Academic success workshops at City Campus

We want to help you succeed with your studies - that's why we run regular workshops at City Campus to help you enhance your skills and improve your confidence.

Workshops coming up in the next two weeks include:

- How to plan your writing - [Tuesday 15 November](#) (Bower Ashton) and [Wednesday 16 November](#) (Arnolfini).
- Presentation skills - [Tuesday 15 November](#) (Bower Ashton) and [Friday 18 November](#) (Arnolfini).
- How to make notes from your reading and lectures - [Tuesday 22 November](#) and [Wednesday 23 November](#) at Bower Ashton.

Please register for each event if you'd like to attend.

See all study support events

## UWE Bristol talks at Arnolfini

Some of our academic staff from City Campus are running talks at Arnolfini - they're free for UWE Bristol students, just remember to bring your student card with you!

[Reportage and documentary drawing](#) - Thursday 17 November, 18:00 - 19:00. Gary Embury, senior lecturer BA(Hons) Illustration discusses contemporary reportage and documentary drawing practice and its relevancy as a source of news reporting.

[Make and think: the tacit knowledge of practice](#) - Thursday 24 November, 18:00 - 19:00. Members of our Make and Think research group seek to question and define how tacit knowledge can be captured and disseminated.

See all Arnolfini talks

**UG, Level 3, HSC:**

## Nursing, midwifery and Allied Health Professions postgraduate open event

We're hosting an [open day](#) at Glenside Campus on **Saturday 19 November** so you can find out more about our Nursing, Midwifery and Allied Health Professions post-qualifying, postgraduate and professional courses.

Postgraduate study is a great way to develop the skills, knowledge and confidence you need to move forward with your career – so come along and discover your options.

Register for the open day

**UG, Level 3, Creative Industries:**

## Art, Design, Film and Journalism postgraduate open event

We're hosting an [open day](#) at Bower Ashton on **Saturday 19 November** so you can find out more about our Art, Design, Film and Journalism postgraduate courses.

Postgraduate study is a great way to develop the skills, knowledge and confidence you need to move forward with your career. And as a UWE Bristol student, you'll be eligible for a tuition fee discount on some of our [postgraduate and professional courses](#).

Register for the open day

**Law:**

## Workshops for Law students

We're running some workshops next week especially for Law students:

- **OSCOLA workshop for referencing legal materials** - 14:00 - 15:00 on Monday 14 November ([register](#)).
- **Using the Westlaw UK database and getting certified** - 13:00 - 14:00 ([register](#)) or 14:15 - 15:15 ([register](#)) on Wednesday 16 November.

# Entering the Legal Profession Fair

We're running our [Entering the Legal Profession Fair](#) on **Wednesday 23 November**, between 15:30 - 19:30 on Frenchay Campus. You'll have the chance to:

- meet practising lawyers from a range of law firms, barristers' chambers and in-house legal teams
- find out about the professional postgraduate courses you'll need to complete to qualify
- have a lawyer give feedback on your CV
- hear trainees talk about life after UWE Bristol as a lawyer in practise

[Register to attend the Fair](#)

**UG, Level 3, Home and EU:**

## 50% tuition fee discount for postgraduate courses

We offer a tuition fee discount of 50% on selected full-time and part-time postgraduate courses through our Vice-Chancellor's 2020 Scholarship scheme.

The scholarship applies automatically to all UWE Bristol Home and EU students who are graduating in 2016.

[See what courses are available](#)

**UG, Level 3:**

## Want to be a teacher?

We run regular get into teaching drop-in sessions so that you can find out how to take your first steps towards becoming a teacher. The next event is on **Wednesday 16 November** – [register now](#).

[See all get into teaching sessions](#)

**Frenchay:**

## Support from your fellow students

[PAL](#) (Peer Assisted Learning) is a scheme where students are trained to run support sessions for other students - it's a great way to learn from someone who knows exactly how you're feeling!

Our PAL Leaders run workshops throughout the year - coming up in November there are sessions on time management, presentation skills and essay writing. Book your place online.

Book to attend a PAL session