



STUDENT VILLAGE ACCOMMODATION SITE INFORMATION

1932 students/single study bedrooms, 326 flats

uwe.ac.uk/accommodation

Your accommodation

The Courtyards

The Student Village consists of four separate courtyards:

Brecon Court, BS16 1ZG	564 students
Cotswold Court, BS16 1ZH	500 students
Mendip Court, BS16 1ZL	400 students
Quantock Court, BS16 1ZP	468 students

Each courtyard has the following communal facilities:

- Post boxes (one per flat)
- Secure bicycle storage
- Common room (situated at Cotswold)
- Laundry facilities (situated at Brecon, Mendip and Quantock)
- Waste and recycling areas.

All accommodation can be accessed using a lift.

Your flat and study bedroom can be summarised as follows:

- Flats are organised in single rooms for groups of five or six students.
- Residents share an open kitchen and lounge area.
- All accommodation is provided on a self catering basis.
- All study bedrooms are single occupancy.
- All study bedrooms are provided with Glide internet service.
- Gas, electricity and water bills are included as part of the rent.

Kitchen and lounge area

Kitchen facilities comprise of two electric cookers, two fridge/freezers, kettle and a microwave. Residents will need to bring their own crockery, cutlery and cooking utensils.

The lounge area has a breakfast bar, stools, easy chairs, a sofa and two coffee tables. There is a TV aerial socket within this area. You are also provided with a Hoover, ironing board, floor brush, mop and mop bucket. You'll need to provide other cleaning materials yourself.

Study bedroom

All individual study bedrooms have a single bed, wardrobe with hanging space and shelves, a mirror, a desk with chair, a chest of drawers, bedside table, desk lamp (or over desk lights) and bookshelves. The rooms are fully carpeted and curtained. There are TV aerial sockets in all bedrooms.

En suite bathroom facilities

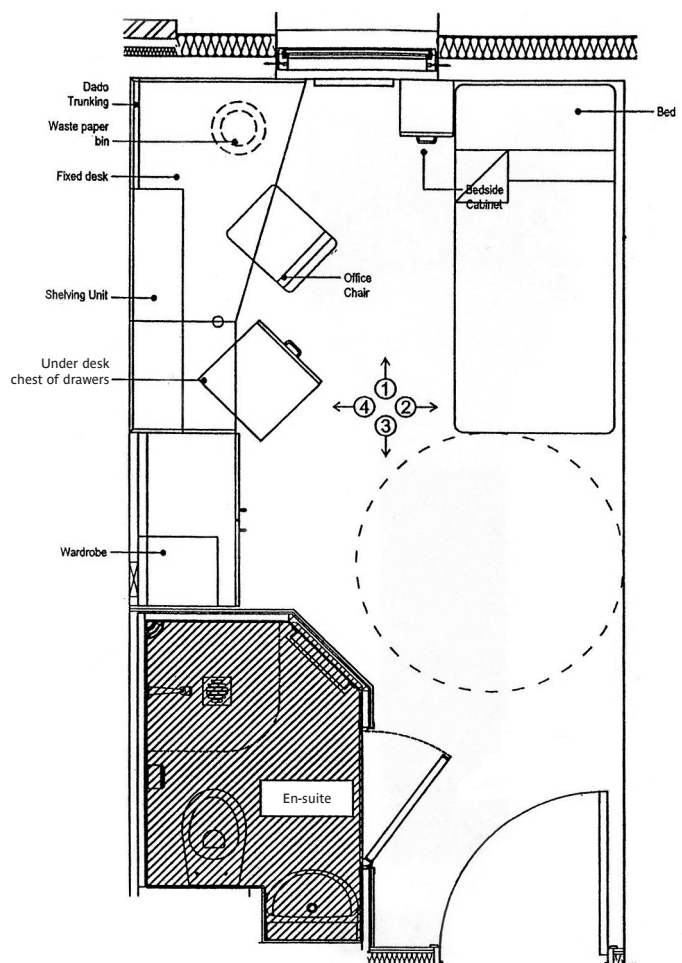
Each study bedroom has its own en suite wet room complete with a shower, toilet and wash basin.



Heating

You can control the temperature in your bedroom by adjusting the thermostat control on the radiator. Time-controlled devices are fitted to the radiators to save energy.

Typical room layout



Other facilities

Laundry facilities

You have access to three laundry facilities in Brecon, Quantock and Mendip Pavilions.

This facility is operated with the use of a mobile app or laundry card if residents don't have a smart phone. Prices start at £2.20 for an eco wash and £1.20 for dryers.

Car parking

There are no car parking facilities if you live in the Student Village. We work closely with the council, police and local residents to ensure that students do not park in nearby residential areas, promoting good community relations with our neighbours. It is also a condition of your Licence to Occupy. The University provides parking for blue badge holders.

Visitors parking

Visitor parking is available via a 'Pay on Exit' system.

From 09:00-17:00 Monday-Friday it's £5 for up to 4 hours or £10 for the day.

It's free to park outside of these times (Monday-Friday 17:00-09:00 and weekends).

uwe.ac.uk/parkingguidance

Parking for motorbikes and mopeds

There is designated parking on campus for motorbikes and mopeds in Car parks 3, 4, 15 and 17, accessible at Northavon house via the North entrance on Frenchay Campus. No permit is required.

Bicycle storage

There is lockable covered bike storage within the Student Village – please ask at reception for access. Bikes must not be stored inside the flats. We recommend the use of a good quality bicycle lock.

Mail

Please ensure that all mail is properly addressed to include your Flat and Courtyard number.

- Each flat has their own post box situated in the appropriate courtyard reception.
- If you are not at home, post requiring a signature on delivery will be delivered to Quantock Court post room and can be collected. See local info for opening times.
- Please do not sign for other people's mail – it should only be collected by the addressee.
- It is an offence to open other people's mail.

The University cannot accept liability for any items of mail that fail to reach the addressee.

Shopping

On Frenchay Campus there are three Student Union shops – one in the Students' Union building – the Village Store at the Centre for Sport and one located in the centre of the campus. You can buy essentials such as milk and toiletries as well as stationery, newspapers, drinks and snacks. There is also an ATM, and a fresh fruit and veg stall.

Within walking distance of Frenchay Campus there is a Sainsbury's and an Asda supermarket at the Abbey Wood Retail Centre. Trolleys must not be removed from Supermarket premises or brought onto campus.

There are frequent bus services to Bristol City Centre and the large Regional Shopping Centre at Cribbs Causeway (The Mall).

Access and loss of key cards

Access to the Student Village is by cards, which opens your Courtyard, Block, Flat and Bedroom door. If you lose your access card a replacement will be provided by Accommodation Services for which you will be charged. Replacement cards can be obtained via Cotswold Court Customer Service Desk.

Report lost/stolen access cards immediately to Accommodation Services in person at Cotswold Court Customer Service Desk. They will be able to issue you with a temporary key card to your flat. Please do not keep your property address with your keys as this is a potential security risk; also do not lend your access key card to anyone else.

Staff

Customer service desk

Cotswold Customer Services are open every day from 07:00 to 22:00 and are happy to help with any enquiries. Please drop in and see them, email cotswold@uwe.ac.uk or telephone 0117 32 86227.

Accommodation managers

Accommodation Managers are available from 08:00–18:00 Monday to Friday and can help you with day-to-day management of your accommodation. You can get in contact with them via the Customer Service Desk, via email: accommodation@uwe.ac.uk or telephone (0117) 32 83601.

Resident assistants (RAs)

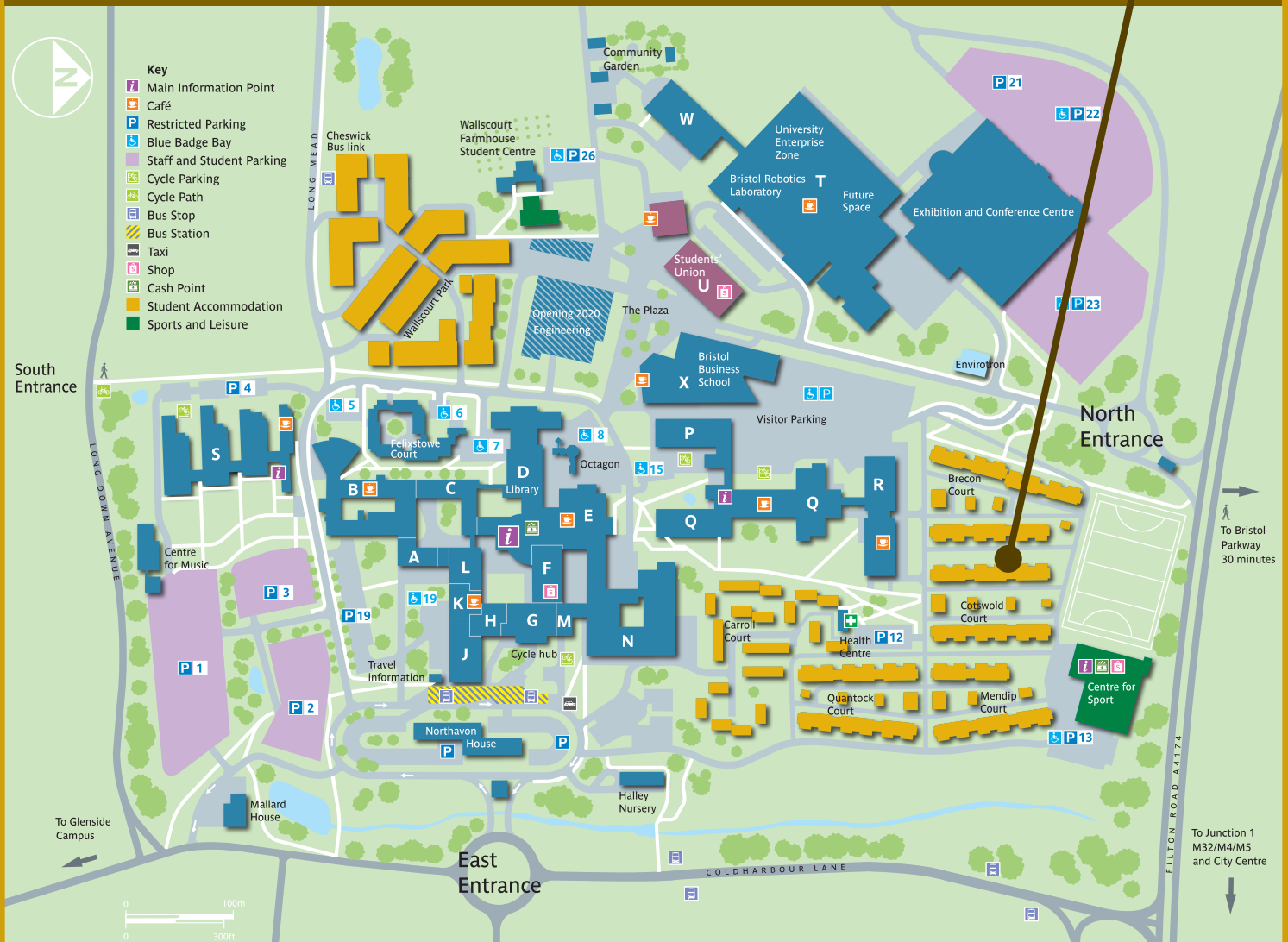
These are students who live within the accommodation to help you settle in and adjust to University life.

Campus Support Officers (CSOs)

These are members of staff that work throughout the evening and weekend, and are available to help with fire alarm activations, noise complaints and patrol the campus to keep you safe.



Location – Frenchay Campus



Accommodation Services

University of the West of England
 Frenchay Campus
 Coldharbour Lane
 Bristol BS16 1QY

uwe.ac.uk/accommodation

Email: accommodation@uwe.ac.uk

Telephone +44 (0)117 32 83601

Fax +44 (0)117 32 82285

