

november 2012

where we started...

A Web-based Academic Workload Management Service



Leadership Foundation: Innovation and Transformation Fund Project, University of the West of England, Bristol

Background

UWE currently operates a comprehensive academic workload model which...

- Includes all academic staff
- Covers the full range of teaching, research, KE, management roles and other activities
- Generates teaching requirements based on student numbers, credit, class sizes, level
- Enables departmental managers to allocate teaching and other activities to individual staff
- Promotes transparent and equitable workloads for academic colleagues
- Supports student experience and entitlement
- Automatically generates TRAC data
- Is a key source of management information

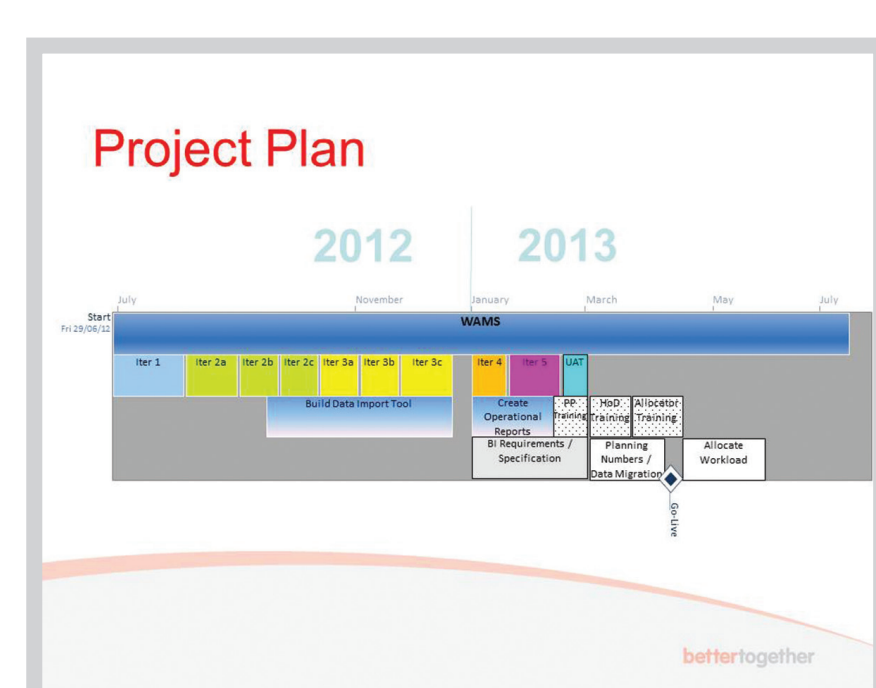
Current system

The current system is fully operational and has been in use for two years – but it is based on a cumbersome spreadsheet platform which looks like this:

The screenshot shows a complex spreadsheet with multiple tabs. Key areas highlighted include 'Staff information', 'Module teaching activity', and 'Workload allocation area'.

- We are in the process of developing a new web-based version of the model. UWE is itself investing in the development of the new system.

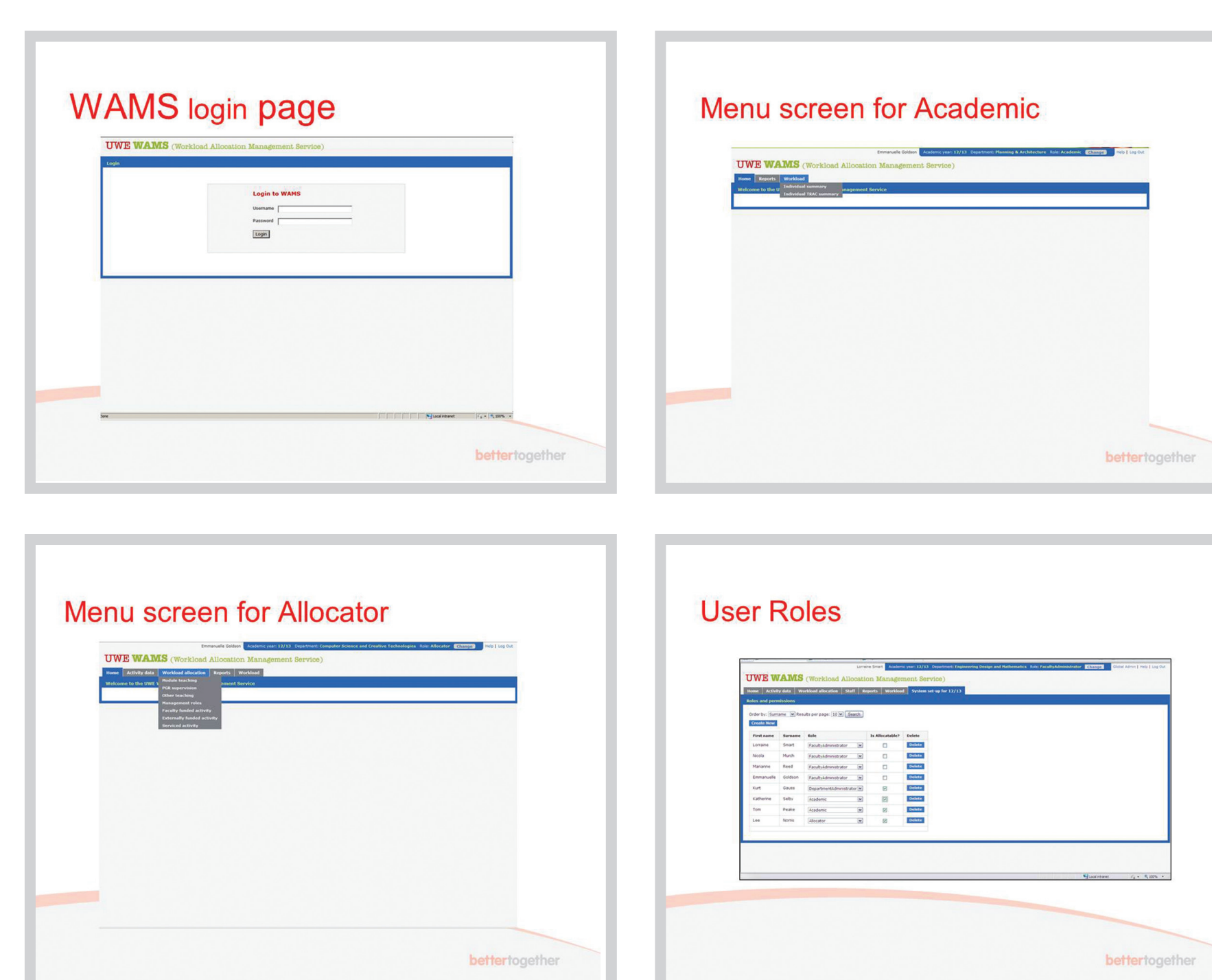
- It is being built by an in-house team in IT Services, with continuous input from academic managers. Based on Dynamic Systems Development, the project will deliver the new system in April 2013.



The Innovation and Transformation Fund Project

The Innovation and Transformation Fund Project will run alongside the main project and will enable us to make the new model available to HEIs across the sector. The new Workload Allocation Management Service (WAMS) will be:

- Built on a generic software platform enabling it to be adopted by other users
- Parameter-driven allowing key variables to be customised as needed
- User-friendly, multi-user, with instant access via the web
- Documented and disseminated via the web



Project Advisory Group and Workshops

There is a project advisory group and there will be workshops open to all HEIs to guide delivery of the project and disseminate the model.

For more information or to get involved at an early stage please contact:

Emmanuelle.Goldson-Croix@uwe.ac.uk
Project Manager and Business Analyst

Martin.Boddy@uwe.ac.uk
Project Lead



University of the West of England