

Schools and Colleges Programme

2013-2014



Welcome

UWE Bristol is committed to continuing to work with schools, colleges and other partners to encourage progression to Higher Education (HE) from a wide and diverse range of students with the potential to succeed.

Our focus is on:

- raising awareness of and aspirations towards HE
- building confidence
- raising attainment prior to HE
- developing progression opportunities and programmes
- supporting transition into and through Further and Higher Education, and at UWE Bristol

We believe that everyone with the potential to benefit from HE should have the opportunity to do so. That's our commitment and it's one that has been reaffirmed in the UWE Bristol Strategy 2020. www.uwe.ac.uk/strategy2020

This includes working with students who are underrepresented in HE, such as: students from areas where there is low participation in HE, disabled students, students from certain minority ethnic groups, Access to HE Diploma students and other adult learners, and vocational learners.

What we do

We offer a **Progression Ladder** of activities and interventions to support the progress of learners from primary ages through to adults, from KS2 to KS5, including pre entry to HE and the applications processes.

We also have a range of dedicated programmes to support learners throughout their student life journey at UWE Bristol, to encourage retention and student success – for excellent graduate outcomes both academic and in employment.

We are engaged in a wide range of multi-faceted partnership work with our school and college partners.

Our outreach activities

This booklet provides an overview of the wide range of work for learners and staff, which is organised and delivered by our very experienced and specialist staff and our Student Ambassadors. Other areas of work are in development and we always welcome feedback – so do get in touch with your ideas and suggestions.

For more detail about specific outreach activities, please follow the web links listed or take a look at our programme leaflets which can be found in the back of this booklet. To express an interest in the activities offered, visit our website www.uwe.ac.uk/schoolsandcolleges and complete our Expression of Interest Form. There are specific eligibility criteria for some programmes and activities.

Fay Croft



Director of Widening Participation and School and College Partnerships





Did you know?

UWE ran more than 500 outreach events in 2012/13

Contents

Hello from us!	4
Years 5 to 6	6
Years 7 to 11	8
Years 12 to 13	10
Adults 19+	12
Summer Schools	14
Faculty provision	16
Specialist provision	22
Staff in partner school and colleges	24
Student stories	26



For further information or to express an interest in any of the activities offered, please visit www.uwe.ac.uk/schoolsandcolleges and complete an Expression of Interest Form.

Hello from us!

Our Staff

The Schools and Colleges Partnership Service (SCPS) is a central team of specialist and dedicated staff who have extensive experience of outreach to widen participation in Higher Education (HE).

Our colleagues provide a range of information, advice and guidance (IAG) related to career opportunities, they offer information and briefings on financial support and UWE Bristol's extensive *bursary provision. In addition, our Faculty colleagues provide subject specific and specialist contributions.

Our Student Ambassadors

Our Student Ambassadors are amongst our greatest assets. They are specially trained and undergo DBS checks. They support, lead and deliver a wide range of our activities and will provide learners with positive role models and an insight into student life. This kind of interaction can have a significant impact on a young person or mature learner's confidence and decision making and can encourage them to achieve their potential, and consider Further and Higher Education as a realistic and achievable option.

Demonstrating Impact

We have extensive evidence of the impact of our work on attitudinal change – we know we have raised aspirations to HE, built confidence, and encouraged and delivered progression to HE over many years.

In 2013/14 we will be emphasising evidence to demonstrate changes in behaviour. We will be setting measurable shared aims with our school and college partners for our work. This will allow us to ensure that we are targeting our work in the most effective areas, and help us and our school and college partners to demonstrate the impact of working together. We will co-ordinate data from a range of sources and share our findings with our partners at appropriate intervals.



*Bursary information:



www.uwe.ac.uk/students/feesandfunding



Did you know?

We employ more than 200 UWE Bristol students to work with our partner schools and colleges



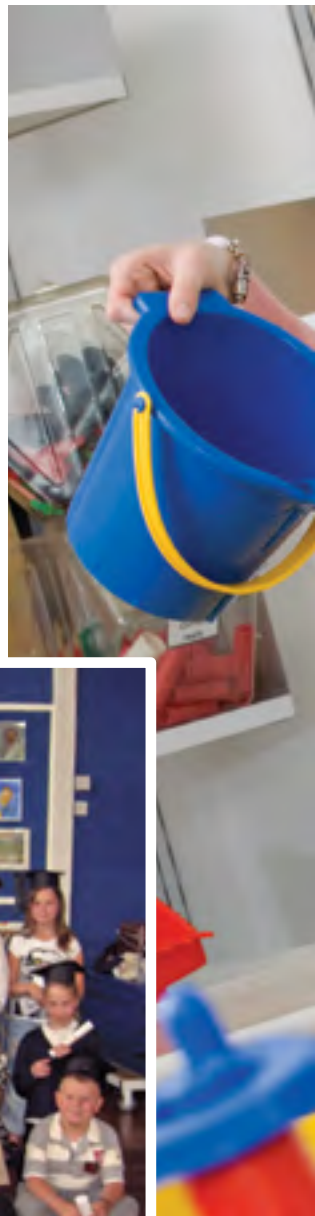
Years 5 to 6

A targeted programme of support for learners, staff and parents/carers linked to key partner secondary schools.

Our aim is to raise aspirations, support increased attainment at KS2 and support transition to Year 7.

Activities include:

- Small group and 1:1 classroom activities, including numeracy/ literacy support.
- School and university-based parent/carer activities.
- Year 6 transition programmes.
- UWE Bristol campus visits and subject support.





Did you know?

40 UWE students worked regularly in target primary schools in 2012/13



Years 7 to 11

We deliver a wide-ranging and extensive programme of support for learners, staff and parents/carers in targeted secondary schools.

Our aim is to support students to enable them to make the right choices and undertake the best preparation for further study and their long term future.

Our programme builds on the Year 6 transition activities to continue to raise aspirations, build confidence, support increased attainment at KS3/4 and to support preparation for KS5 and transition to post 16 study.

Activities include:

- School-based activities related to GCSE choices, progression routes to HE and financial support.
- Employment and career opportunities and information sessions.
 - Pre HE Careers HE/UCAS Days sessions. These explore HE and employability, including choosing the right degree course, researching the best websites, exploring what graduates earn and how to secure a good job after graduation.
 - Pre HE Careers 1:1 impartial careers guidance interviews with action plan (limited number of learners).
- Literacy and numeracy support.
- Student subject specific tutoring and mentoring by our specially trained Student Ambassadors to support learners and teachers in the classroom.
- Awareness and aspiration raising campus visits.
- Campus-based subject enrichment days.
- Bespoke events such as:
 - Careers/progression events (Years 8 to 13, school staff and parents/carers).
 - Teentech (Years 8 and 9).
 - STEM Days.
 - Summer Schools.
 - Talent Ticket (in partnership with BBC, with a focus on creative and media).



Further information:



www.uwe.ac.uk/schoolsandcolleges



Did you know?

Working with the University of Bristol, we provided more than 3,000 hours of mentoring and tutoring via Student Ambassadors in 2012/13



Years 12 to 13

including Further Education Level 3 - ages 16 to 19

A well-established and extensive programme of support for learners, staff and parents/carers in partner schools and colleges.

Our aim is to build on preparatory work pre 16, and also to further stimulate aspirations, confidence and readiness for further and higher education.

There is an emphasis on immediate preparation for potential next steps as well as support in making informed decisions about the long term future.

The programme includes generic advice and support for progression to HE as well as specific advice about opportunities available at UWE Bristol, how to apply, and support for the applications process.

Ages 16 to 19

- HE/careers fairs, including the Bristol UCAS Fair, careers events and fairs in schools and colleges.
- Subject specific workshops in schools and colleges.
- Preparation for HE workshops in schools and colleges (including how to apply, financial support, personal statement writing and student life).
- Taster days and campus visits (about progression to HE and subject specific).
- Mentoring and tutoring.
- Events for parents/carers.
- Library visits (includes insight into HE study and research, access to a wide range of resources including some online, and support for assignments and coursework).
- Pre HE careers workshops (careers guidance, in small groups, designed to support late applicants or for those learners who have not received HE offers).
- Summer Schools.

Heading Higher Passport Plus (HHP Plus)

HHP Plus is a compact scheme to prepare learners for HE, and in particular, for progression to UWE Bristol.

HHP Plus provides:

- Additional support and guidance for learners.
- Opportunities for self-assessment.
- Learning modules and a Learning Log to record experiences.
- Potential for additional UCAS points for entry to UWE Bristol.

For more information about HHP Plus, for guidance, and lots of staff and student resources, visit www.uwe.ac.uk/hhpp





Did you know?

HHP Plus students are nearly 1.5 times more likely to be accepted on their course at UWE Bristol



Adults 19+

UWE Access Higher

A flexible, structured programme for Access to HE Diploma learners and other mature students supporting their smooth transition to HE study and onto the right course and, where appropriate, to UWE Bristol.

This tailored programme of activities includes a free annual conference in September, which is designed to be part of an induction programme for students enrolling at UWE Bristol.

Activities include:

- HE talks and special events.
- Self-assessment for readiness for HE.
- Completion of a Learning Log.
- Rod Coleman Bursary Scheme.

If you have any questions about the scheme you can e-mail scps@uwe.ac.uk with the subject field 'Access Higher'.



For more information click on the UWE Access Higher pages at

www.uwe.ac.uk/uweaccesshigher



Did you know?

At UWE Bristol, BME students are more likely to get good honours than the national average



Summer Schools

We have a long, established track record of residential and non-residential Summer Schools. These are popular events and availability varies from year to year.

Summer Schools may include:

- Year 10 Wider Key Skills Summer School (*residential*)
- Year 10 Art, Media and Design Summer School (*non-residential*)
- Year 12 STEM Summer School (*residential*)
- Year 12 Subject Taster Summer School (*residential*)
- Get Set for HE (*predominantly non residential, see UWE Access*)



Further information:

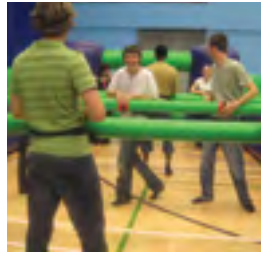


www.uwe.ac.uk/schoolsandcolleges



Did you know?

More than 300 students attended our Summer Schools in 2013



Faculty provision

Academic staff contribute to a range of generic and integrated activities at all ages. We are constantly developing areas of work within faculties.

The following are currently available:

Faculty of Environment and Technology

- Maths events - Year 12.
- Climate Change Day – Years 11 to 13.
 - Classroom-based keynote lectures.
 - Field-based visits where renewable energy options such as wind, tide and nuclear power are present or planned.
- Your Green Future - Years 12 to 13.
 - Experts and thinkers offer advice and inspiration on developing a green future.
 - Learners develop green business ideas with enterprising businesses.
- Exhibition, featuring companies from across the green industry.
- Dragon's Den-style workshop to explore cutting-edge green innovation, including Tata's electric car and Airbus's new A320neo aircraft.
- Education Through Expeditions - Years 7 to 13.
 - Workshops linking school pupils with explorers from UWE Bristol who have engaged in expeditions to Iceland, Kenya, Dartmoor and China.
- Computer Science Technology Days.
- Bloodhound Workshops.
- Flood Summer Schools.
- STEM Days – Year 10.



Further information:



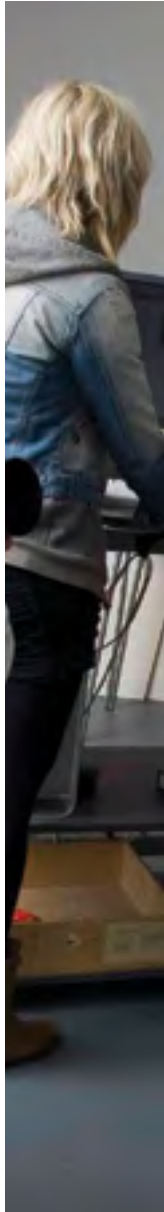
www.uwe.ac.uk/schoolsandcolleges



Faculty of Arts, Creative Industries and Education

Drama workshops – Years 9 to 13.

- Held in schools and community centres leading to collaborative performances.
- Subject tasters (eg. Film Studies).
- Gifted and Talented workshops – Years 9 to 13.
 - One-day vocational study resulting in a portfolio of work that could enhance subject grades.
- Creative Writing workshops.
- Creative Arts, Media and Degree Shows. Visit www.uwe.ac.uk/degreeshows



Further information:



www.uwe.ac.uk/schoolsandcolleges



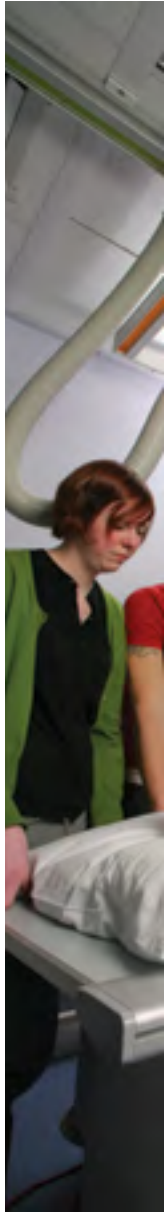
Faculty of Business and Law

Street Law Programme – Years 10 to 13.

- A one-day workshop for learners interested in studying law at university. Learners take part in a mock trial (criminal or humanitarian), meet current UWE Bristol students and learn about career pathways to law and related work.
- Business taster sessions.

Faculty of Health and Applied Sciences

- Subject taster days.
- Careers talks and workshops.
- Programmes for professional training (to help learners gain an understanding of the professions they are interested in).



Further information:



www.uwe.ac.uk/schoolsandcolleges



Specialist provision

Looked after children

Developed and delivered in partnership with universities and Virtual Schools across the South West, to support learners, staff, carers and other key influencers.

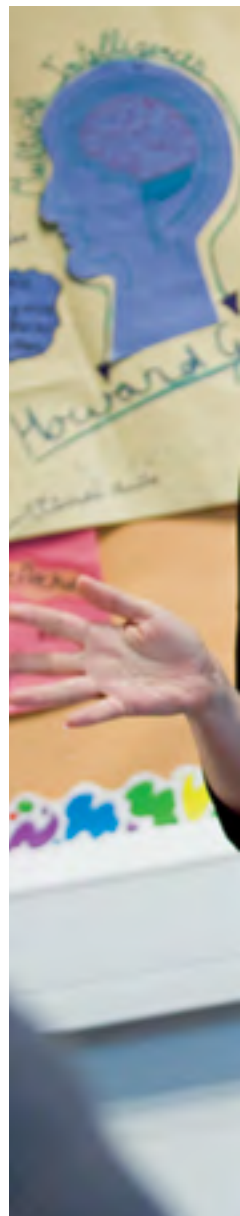
Our aim is to enable students to make the right choices and undertake the best preparation for further study and their long term future, through a progressive programme of activities to aid transition at key stages, to raise aspirations, build confidence and support increased attainment.

It includes campus-based activities related to GCSE choices, progression routes to HE and financial support. There are employment and career opportunities and information sessions; literacy and numeracy support; 1:1 and small group mentoring by our specially trained Student Ambassadors; awareness and aspiration raising campus visits; campus-based subject enrichment days; a Work Experience Programme (Year 10) and Summer Schools.

Prince's Trust XL Programme

A programme of fun, hands-on technology-related activities delivered in partnership with Prince's Trust. It supports young people aged 13 to 19 in Bristol, B&NES, North Somerset and South Gloucestershire who are at risk of under-achievement or exclusion from school.

The programme aims to improve motivation and self esteem; improve attitudes and attendance; increase confidence and motivation to learn; raise aspirations and awareness of opportunities for Further and Higher Education; increase capability in the understanding and use of technology; and promote inclusion. Participants work towards a Prince's Trust qualification.



Further information:



www.uwe.ac.uk/schoolsandcolleges



Staff in partner schools and colleges

An extensive and developing free programme, to support staff in our partner schools and colleges. It's designed to increase knowledge and understanding of HE in the current context and to support the further development of our partnerships.

Our programmes are suitable for a range of staff, including senior managers, Heads of 6th Form/ Advanced Programmes, Post 16 tutors, Information, Advice and Guidance staff (IAG), Access to HE Diploma staff. Sessions can be delivered at UWE Bristol, or in schools or colleges.

Includes:

- Staff conferences.
- Breakfast and twilight briefings (subject specific or themed, eg admissions processes, use of the library, support for students at UWE Bristol).
- Continuing Professional Development (CPD) related to the curriculum, including subject specific taster days for staff.
- Tutor training sessions, including financial and bursary support for students, the HE application process, enhancing HE application, plus Personal Statement writing and reference writing.
- Pre HE Careers Consultancy, to assist school and college staff planning an event or HE Careers Programme. We also offer tutor training workshops focussed on Years 12 to 13 tutors, that help provide answers for learners about HE and employability.
- Business and Law Staff Network, for like-minded professionals interested in developing relationships that would be mutually beneficial for learners. Periodic electronic newsletters, invitations to relevant UWE Bristol events, web support and up-to-date information on undergraduate courses.

Further information:



www.uwe.ac.uk/schoolsandcolleges



Did you know?

Key staff from partner schools and colleges attended UWE based IAG meetings in 2012/13



Student stories



"Nursing has always been my passion. I'm determined to succeed. I've had so much support and encouragement from my family and from UWE Bristol too. I have an amazing tutor."

Melissa Lamb – 2nd year Adult Nursing student



"I attended a UWE Open Day, and then went on the 5-day Summer School. The experience I had touring the campus, speaking with tutors and Student Ambassadors, was really helpful. It was nothing too intensive, but I am sure it prepared me to study here - as I've taken to university life really well."

Dipo Ogunmodede - 2nd year Film Studies student



"I arrived at UWE via the Access route. Not only did I learn about mental health, I learned a lot about myself. UWE was a great experience and my degree has opened the door to a whole new world of opportunities that I imagined were unattainable to me at my age. I am now employed as a Mental Health nurse helping people address addiction so that they can change their lives. I would encourage anyone hoping to progress to university to explore all the options. Don't be put off."

John Daly – Mental Health Nursing graduate

For further information

E-mail SCPS@uwe.ac.uk

Telephone +44 (0)117 3282162

Website www.uwe.ac.uk/schoolsandcolleges

Schools and Colleges Partnership Service
UWE Bristol
Frenchay Campus
Coldharbour Lane
Bristol BS16 1QY

Follow us



www.uwe.ac.uk/followus