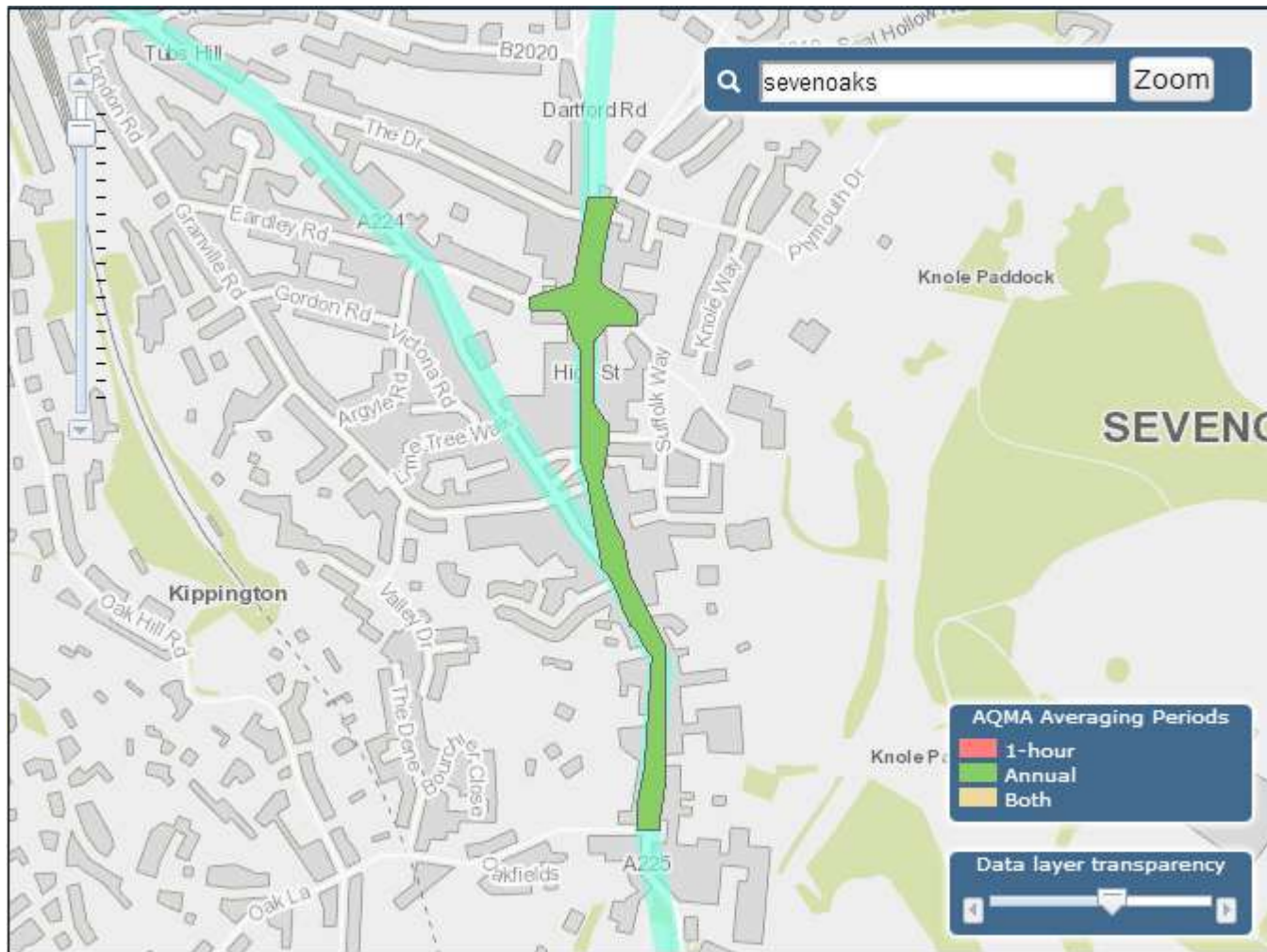




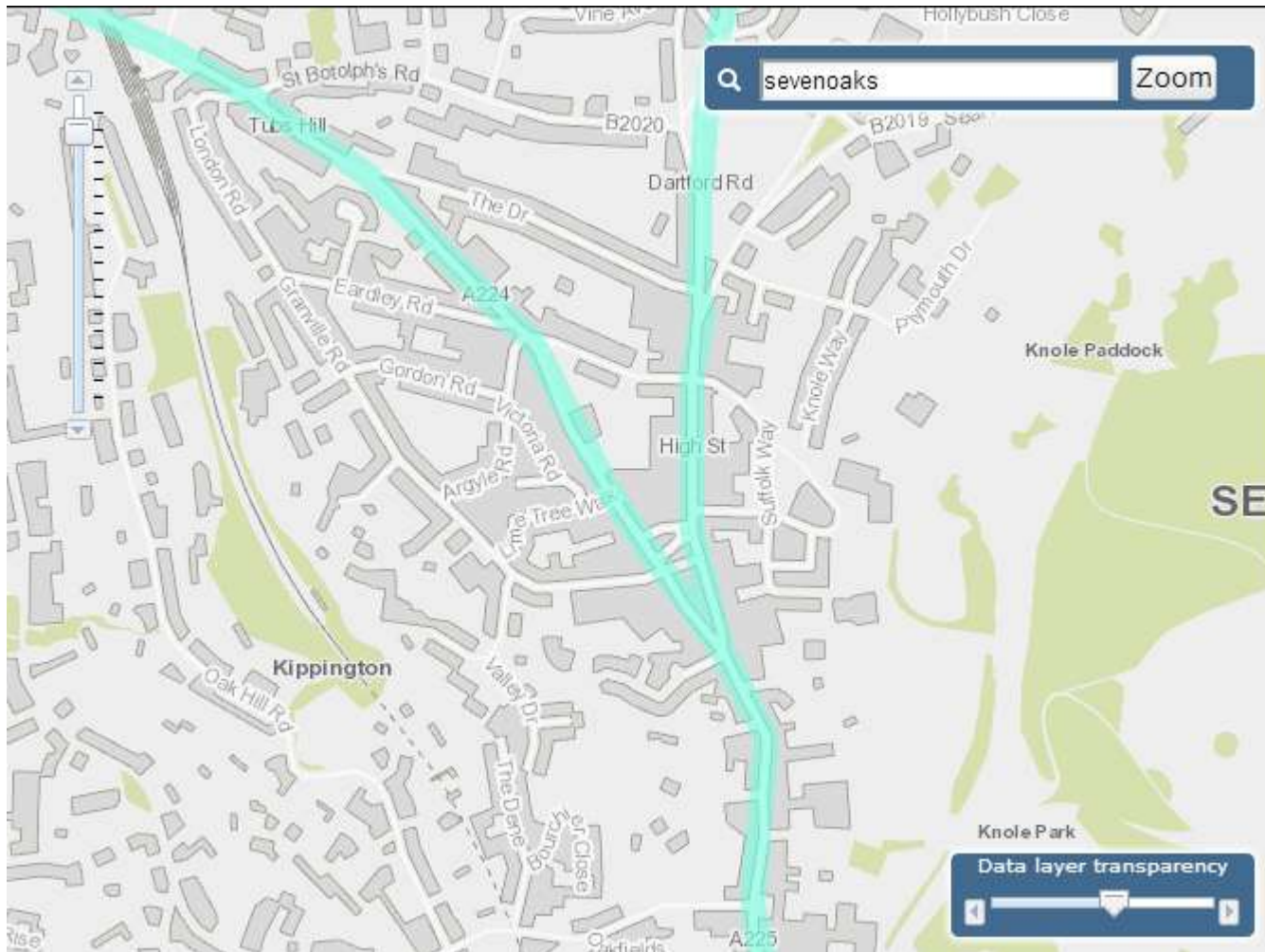
LAQM Consultation

Duncan Laxen

Sevenoaks High Street AQMA

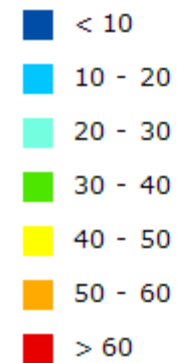


Sevenoaks – 2010 PCM Model



NO₂ roadside concentration

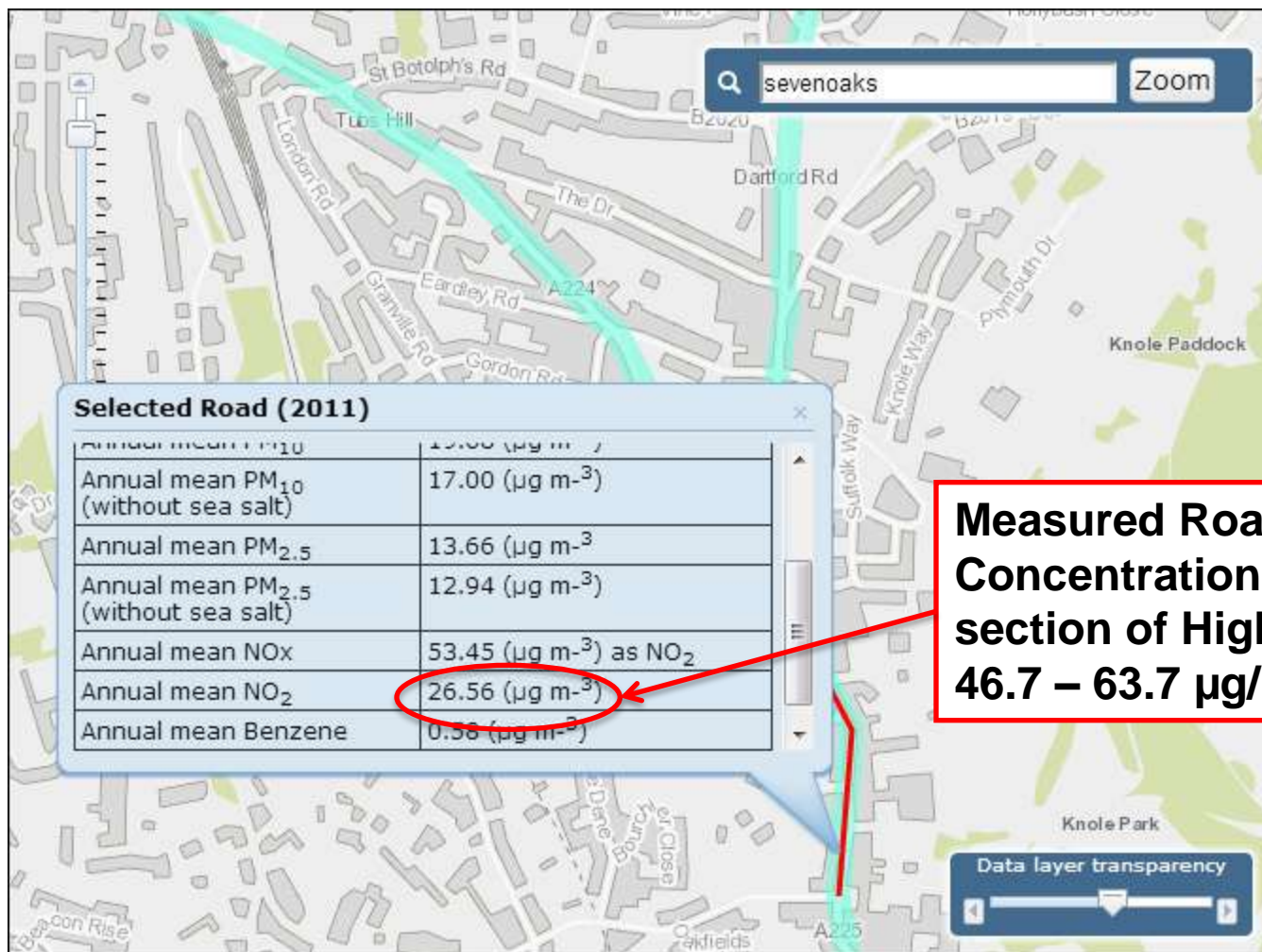
Annual mean ($\mu\text{g m}^{-3}$)



Sevenoaks – 2010 Measured Concentrations



Sevenoaks High Street – 2010 PCM Model



Sevenoaks High Street & Defra UK-AIR GIS Tool Guidance

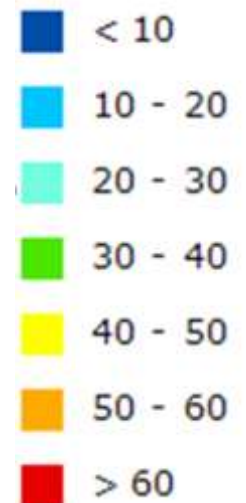
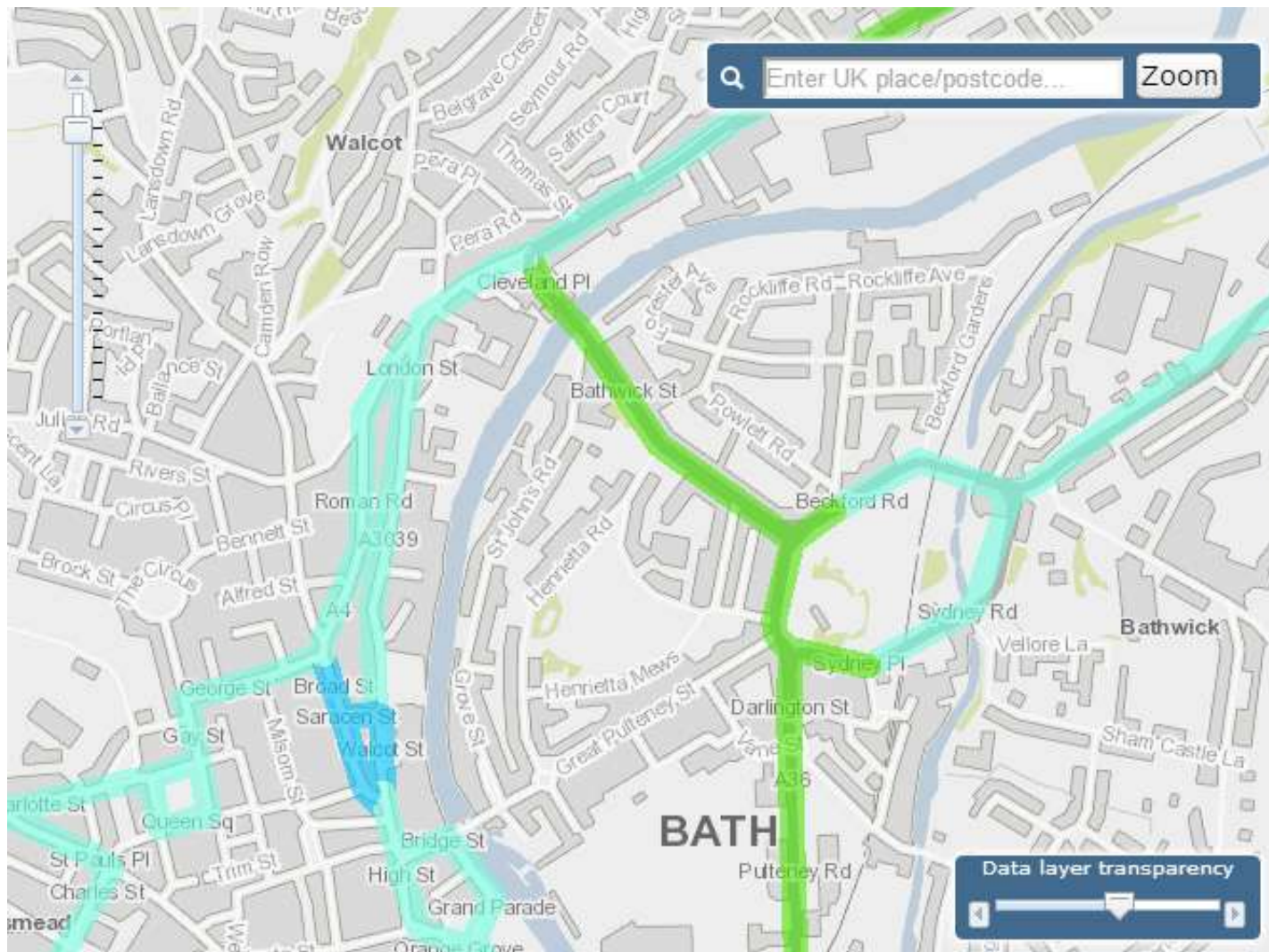
“The Directive does not require assessment of small micro-environments which are defined as stretches of road where the concentrations are representative of less than 100 m in length”.

This stretch of Sevenoaks High Street is 350m long

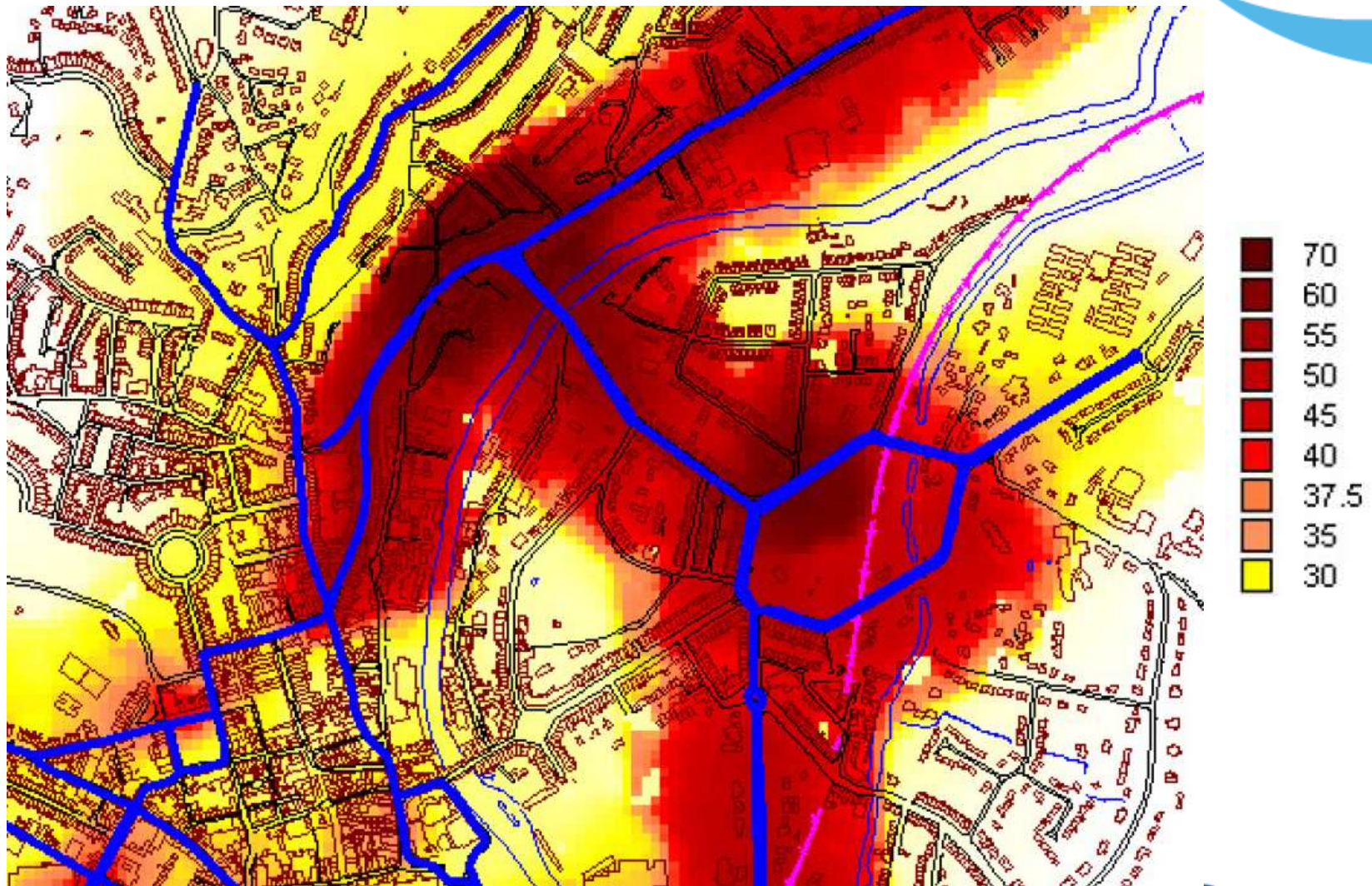
“The Directive requires no assessment in the vicinity of major junctions (within 25 m). This is addressed by using a single value for each road link and thus any additive effect of the contributions to the micro environment at a junction from more than one road is not included”.

There are no junctions close to the monitoring sites on this stretch of Sevenoaks High Street

Bath 2011 PCM



Bath 2009 Council Model





Head Office

23 Coldharbour Road, Bristol BS6 7JT

Tel: 0117 974 1086

London Office

12 Airedale Road, London SW12 8SF

Tel/Fax: 020 8673 4313

