

UWE Nedstat Sitestat User Guide

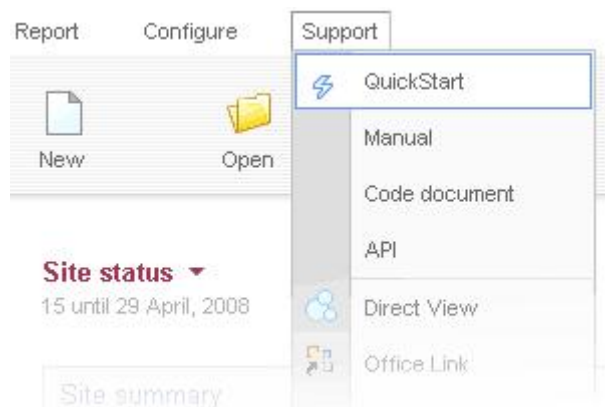
Version 1.0

IT Services

1 May 2008

Introduction to Nedstat Sitestat

The University has introduced a web statistics package called Nedstat Sitestat to provide detailed information about visitors and their behaviour on UWE websites. Sitestat has been rolled out to the top level UWE pages, the majority of services, faculty/ school pages and the courses database. This guide provides information on how to create reports on UWE websites with Sitestat and should be used in addition to the guidance provided by Nedstat. The Sitestat Quick Start guide and Manual can be accessed from the Support menu in Sitestat:



Logging into Sitestat

You can login into Sitestat from the following URL: <http://siteview.nedstat.nl/html/index.html>

Please note: The Sitestat login is case sensitive and the client name is **uwe**.

How to refer to web pages within Sitestat

There are a number of points that need to be remembered when referring to web pages within Sitestat. Firstly when referring to pages on the WWW server (pages starting with <http://www.uwe.ac.uk/>) in Sitestat you don't need to include any of the server details. Additionally backslashes (/) in the web address are replaced with a full stop (.) and the web page extension (shtml, html, asp, etc) are replaced with **.page**. For example the following page <http://www.uwe.ac.uk/aboutUWE/campus/Glenside.shtml> is referenced as **aboutUWE.campus.Glenside.page** in Sitestat.

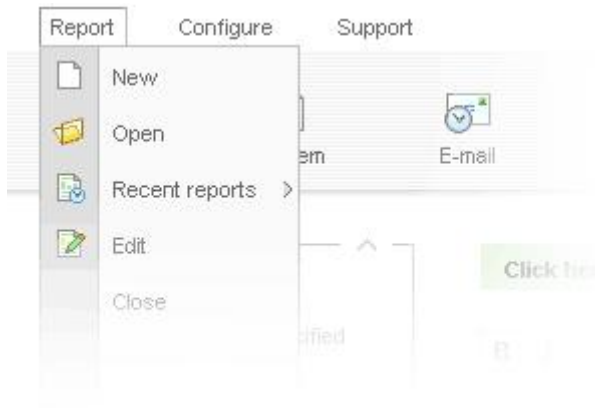
Root pages within a folder such as <http://www.uwe.ac.uk/education/> will become **education.index.page** this is because the root page of this folder is **index.shtml**.

For web pages located on servers other than WWW you will need to add an additional parameter to indicate the server. For example the following page <http://info.uwe.ac.uk/acreg/default.asp> is referenced as **info.acreg.default.page** in Sitestat.

Please Note: Sitestat predicts the name of the page in a dropdown, simply select the appropriate page from the list you want to report on.

Creating a simple visitor report for a specific webpage

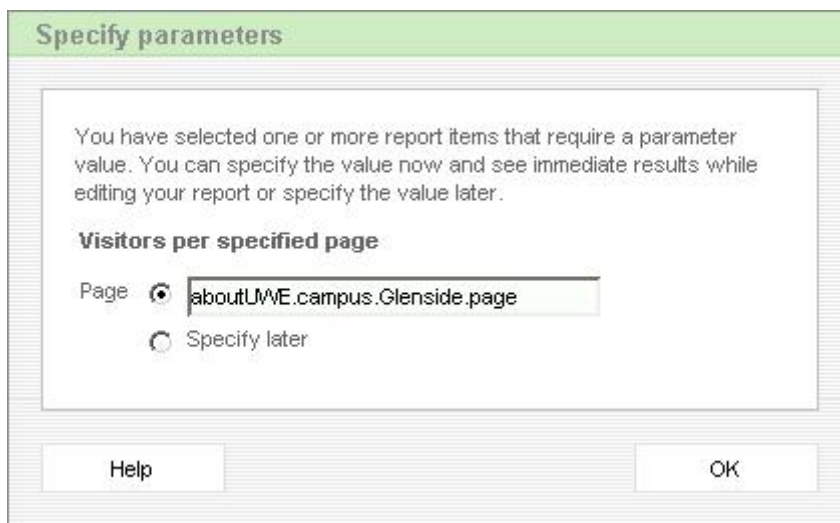
1. Once logged in you will see the Sitestat homepage which provides an overview of UWE stats.
2. From the '**Report**' dropdown list, select '**New**':



3. From the list of report items select '**Visitors per specified page**' from **Visitors > General**:



4. Select '**OK**' to confirm your selection.
5. You will see a '**Specify parameters**' pop-up box where you are able to specify which page you want to obtain statistics for:



6. Enter the details of the specific page and press '**OK**'. (Sitestat predicts the name of the page in a dropdown):

Visitors per specified page

Page	<input checked="" type="radio"/>	aboutUWE.campus.Glenside.page	
	<input type="radio"/>	aboutUWE.campus.Glenside.page	58

7. The report will then be automatically generated.

Examples of how to refer to directories within Sitestat

Referring to web directories/folders within Sitestat is a similar process to referring to pages in that you replace backslashes with full stops. For web pages located on servers other than WWW you will need to add an additional parameter to indicate the server.

For Example:

<http://www.uwe.ac.uk/bbs/news/> becomes **bbs.news** (We ignore the http://www server info).

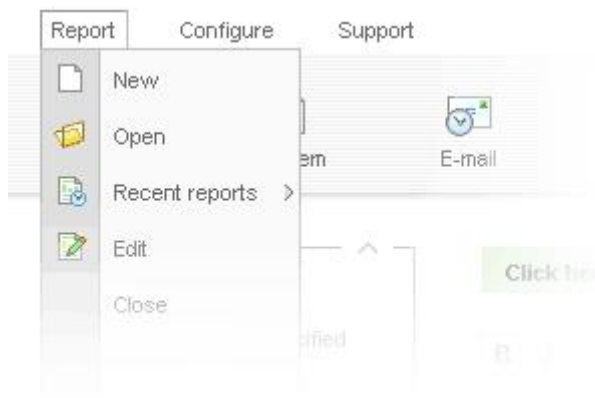
<http://info.uwe.ac.uk/acreg/> becomes **info.acreg**

<http://science.uwe.ac.uk/> becomes **science**

<http://courses.uwe.ac.uk/> becomes **courses**

Creating a simple visitor report for a directory

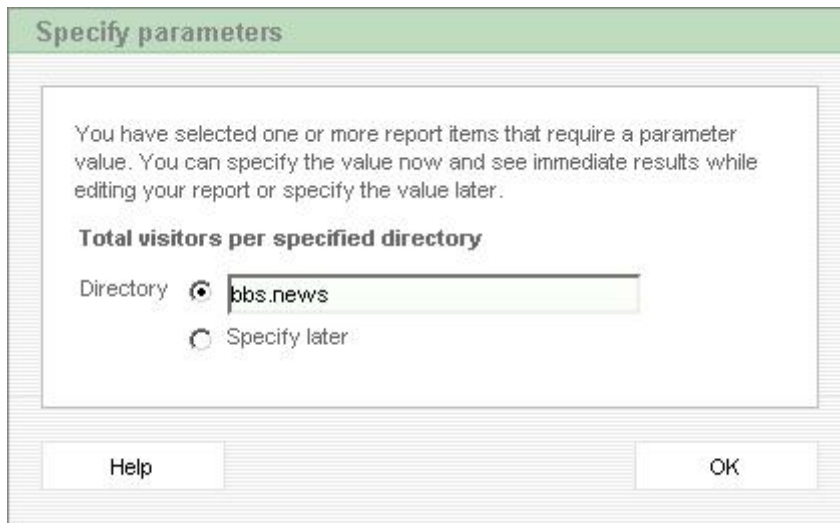
1. Once logged in you will see the Sitestat homepage which provides an overview of UWE stats.
2. From the '**Report**' dropdown list, select '**New**':



3. From the list of report items select '**Total visitors per specified directory**' from **Visitors > General**:

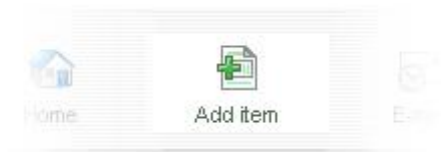


4. Select '**OK**' to confirm your selection.
5. You will see a '**Specify parameters**' pop-up box where you are able to specify which page you want to obtain statistics for:



6. Enter the details of the specific directory and press '**OK**'. Unlike pages, Sitestat does not predict the name of the directory.
7. The report will then be automatically generated.

You may also wish to generate a report detailing the spread of visitors to the web pages contained in a directory; this can be achieved by selecting '**Visitors per page within a specified directory**'. To add report items to an existing report you can just select 'Add item' on the toolbar.



Amending the parameters of report items

The parameters (Time period, Sites, Format) of a full-page report can be set by changing the options on the left of the Sitestat screen.

Time period

Past 7 days

< April, 2008 >

M	T	W	T	F	S	S
31	1	2	3	4	5	6
7	8	9	10	11	12	13
14	15	16	17	18	19	20
21	22	23	24	25	26	27
28	29	30	1	2	3	4
5	6	7	8	9	10	11

☐ Reference period

Update

Site(s)

uwe-ext

uwe-int

Update

Format

Report

Dashboard

Update

Time period

You can set the period of time that the report covers by changing the details on the left by either using the drop down menu or by selecting specific dates.

You can do this by clicking once on a start date and clicking once on another, end date. Sitestat will colour all the dates in-between in blue.

Pressing 'Update' will apply the new Time Period to all the items in the report. (You can override these general settings by amending the Parameters in each specific item – see below).

Sites

You can specify whether the produced statistics include visitors from off-campus or on-campus by selecting either uwe-ext or uwe-int (or both).

Format

You can select the general format of all the items in the report by selecting either Report (detailed totals, percentages, including some graphs) or Dashboard (top-level totals, predominantly graphical).

The parameters of individual report items can be set (which will override the settings for the entire report) by clicking on 'Edit' for the item.

▶ Visits per page within a specified directory

Edit

Copy

Delete

Reporting period

▶ 21-04-2008 until 27-04-2008

Directory

▶ info.myuwe

Again you can set your preferred options for the Display, Parameters, Time Period, and Sites.

Edit report item

Display

Parameters

Time period

Site(s)

Drill down

User texts

Parameters

Properties

In addition you can also set 'User texts' which allows the entering of additional information (report title and commentary) to describe what the statistics are.